

OCCASIONAL PAPER No. 251

**Records of the
Zoological Survey of India**

A Bibliography of Fossil, Reptilia of India

**T. K. Pal
S. K. Ray
B. Barik
K. D. Saha**

ZOOLOGICAL SURVEY OF INDIA

OCCASIONAL PAPER No. 251

**RECORDS
OF THE
ZOOLOGICAL SURVEY OF INDIA**

**A Bibliography of Fossil
Reptilia of India**

**T. K. PAL
S. K. RAY
B. BARIK
K. D. SAHA**

Zoological Survey of India, M Block, New Alipore, Kolkata-700 053, India.

Edited by the Director, Zoological Survey of India, Kolkata



**Zoological Survey of India
Kolkata**

CITATION

Pal, T. K., Ray, S. K., Barik, B. and Saha, K. D. 2006. A Bibliography of Fossil, Reptilia of India. *Rec. zool. Surv. India, Occ. Paper No. 251* : 1-47, (Published by the Director, *Zool. Surv. India*, Kolkata)

Published : May, 2006

ISBN 81-8171-109-2

© *Govt. of India*, 2006

ALL RIGHTS RESERVED

- No part of this publication may be reproduced stored in a retrieval system or transmitted in any form or by any means, electronic, mechanical, photocopying, recording or otherwise without the prior permission of the publisher.
- This book is sold subject to the condition that it shall not, by way of trade, be lent, resold hired out or otherwise disposed of without the publisher's consent, in an form of binding or cover other than that in which, it is published.
- The correct price of this publication is the price printed on this page. Any revised price indicated by a rubber stamp or by a sticker or by any other means is incorrect and should be unacceptable.

PRICE

Indian Rs. 100.00

Foreign \$ 7 £ 5

Published at the Publication Division, by the Director, Zoological Survey of India, 234/4 A.J.C. Bose Road, 2nd MSO Building, Nizam Palace (13th floor), Kolkata - 700 020 and printed at Krishna Printing Works, Kolkata - 700 006.

**RECORDS
OF THE
ZOOLOGICAL SURVEY OF INDIA
OCCASIONAL PAPER**

251

2006

Pages 1-47

CONTENTS

INTRODUCTION	1
BACKGROUND OF THE REPTILIAN ANCESTRY	1
DISCUSSION	4
TABLE 1 : MAJOR REPTILIAN FOSSIL.... BEARING OF INDIA	5
SUMMARY	6
ACKNOWLEDGEMENTS	6
BIBLIOGRAPHIC REFERENCES	7
TABLE 2 : FOSSIL REPTILIAN TAXA.... VARIOUS PARTS OF INDIA	28

INTRODUCTION

The varied reptilian forms (extinct and extant) have been arranged in about fifteen to twenty orders by various authors (Romer, 1966). There is however a controversy whether they all evolved directly and independently from the base of the reptilian stock. The earliest remains of reptiles were found in the Carboniferous, but the known specimens from that period are not too many. Since all knowledge of Carboniferous fossils are gained practically from the coal swamp deposits, understanding about the life of higher and drier regions are virtually negligible where reptilian might well have already been numerous. Dating from the end of the Carboniferous and the beginning of the Permian times are deposits of a more terrestrial type in which were found many reptilian forms in different parts of the world. Exploration of these fossils in the Indian territory is far less exhaustive. For a retrospection of the study of palaeontology of reptiles in India, the task of a bibliography was taken up in the first phase. This bibliography was prepared by scrutinizing all available Indian Journals and the *Zoological Records* since 1836.

BACKGROUND OF THE REPTILIAN ANCESTRY

There is hardly any more interesting episode in the evolutionary history of the vertebrates than that of the rise and fall of the reptiles (Fig. 1). Evolved from the later phase of the Palaeozoic era, they became the dominant group of vertebrates during the whole of Mesozoic era and gave rise to many spectacular types. Towards the end of the Carboniferous period

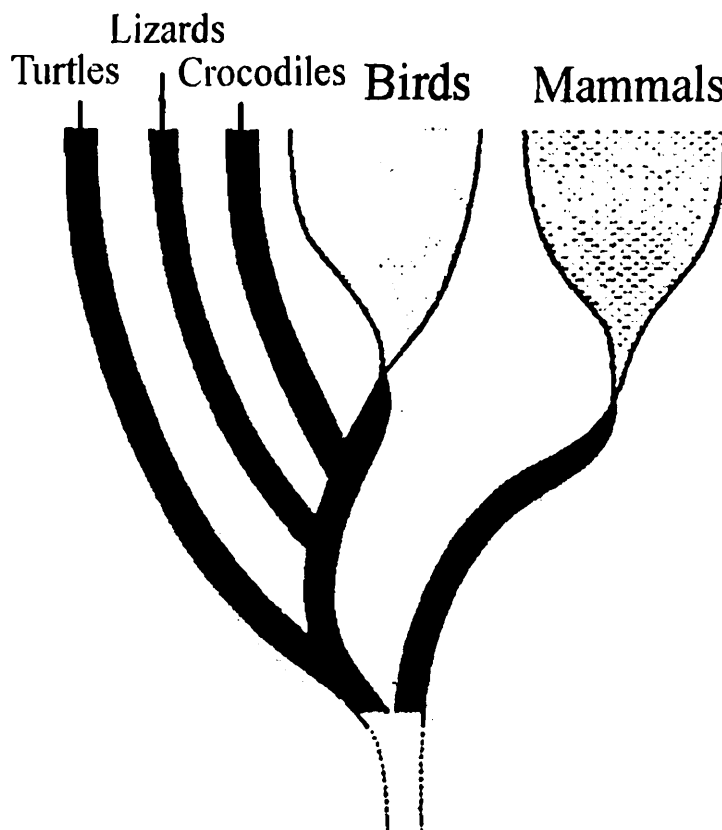


Fig. 1. A simplified phylogram of the amniotic vertebrates (after Carroll, 1987)

the vertebrate organization evolved fully terrestrial populations, a level ahead of the amphibian organization, that do not need to breed in water—the Amniota. The eggs of these tetrapods developed extra embryonic membranes, the allantois, chorion and amnion—that helped in retaining water, allowed exchange of gases, provided support and protection so that the embryo attained an advanced stage before it is hatched or born. Since that time many divergent lines have evolved from the single stock of primitive tetrapods, including the birds and mammals. It has therefore been paradoxical to specify what is meant by a reptile. The assemblage actually does not refer to a single vertical line of development or branch of an evolutionary tree, but means a sort of horizontal division, marking a band of evolutionary branches, projecting a level of organization beyond that of the amphibian but below that of either the bird or mammal. A simplified phylogram (Fig. 2) shows that the groups commonly referred to as the reptiles are a phylografically heterogenous assemblage. We have been using for practical purposes, the term 'reptilia' to refer informally to the turtles, crocodiles, lepidosaurs and primitive amniotes.

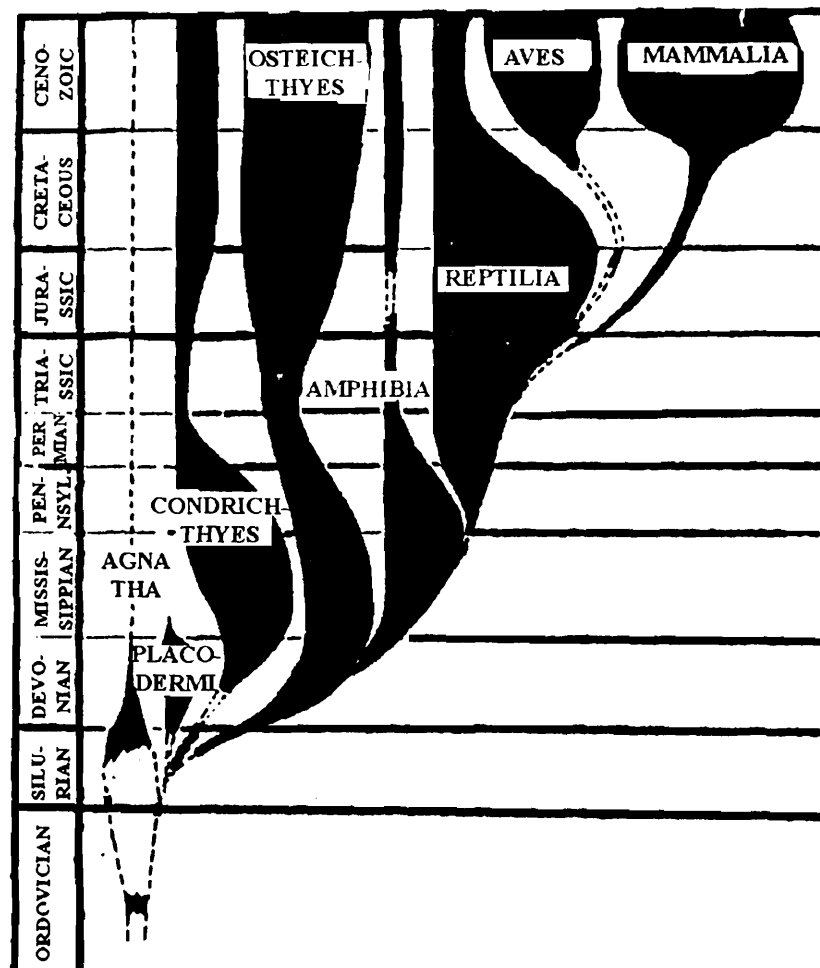


Fig. 2. A phylogram showing the origin and evolution of various vertebrate groups including reptiles; comparative abundance of various group is indicated by the thickness of various branches (after Romer, 1966)

The existing reptiles belong to four out of a dozen or more lines that had existed (Fig. 3). The most successful modern forms are placed in the order Squamata, the lizards and snakes, the latter being of relatively recent appearance in their existing state. Secondly the tuatara, *Sphenodon*, of New Zealand is a relic surviving with little change from the Triassic advent of this group. Thirdly, the crocodiles are an order offshoot from the stock from which the birds evolved. Fourthly, the tortoises and the turtles (order Chelonia) have retained to a certain extent, the organization of still earlier times, perhaps due to the special protection of their shells. Though they are greatly modified in some ways, they still show several features of the Permian reptiles. The three living orders (excluding the Rhynchocephalia in which the tuatara is placed) have closely similar patterns of record. They originated rather obscurely, expanded in a gradual way to a marked maximal during the Cretaceous, and then continued with fluctuations to the recent times. The records of all of them show an abrupt decline in

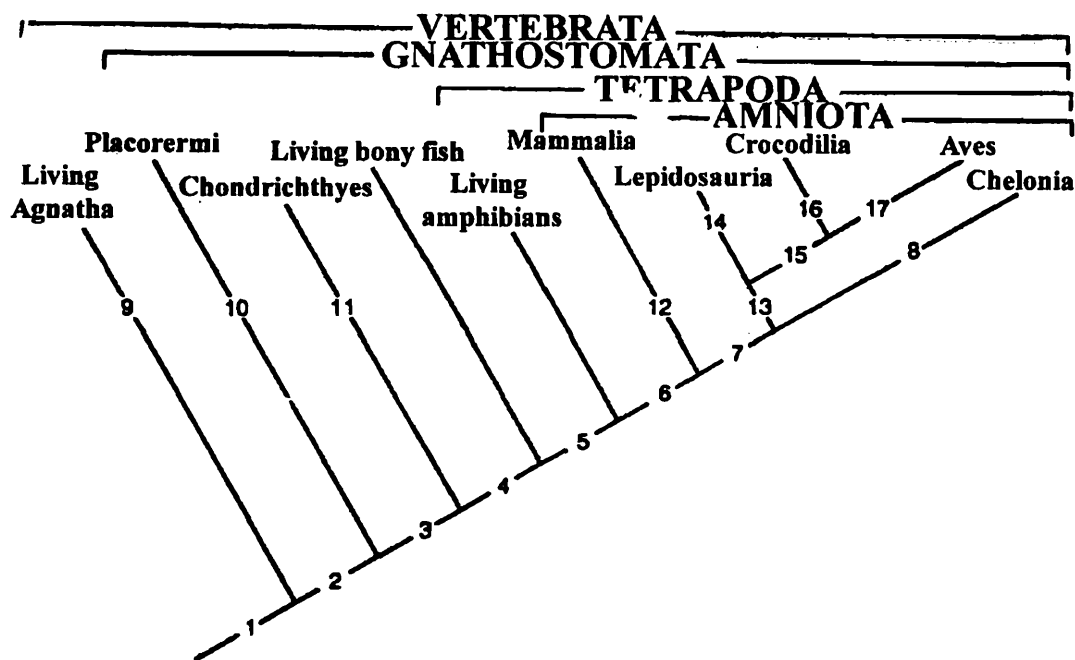


Fig. 3. A cladogram showing a nested series of monophyletic groups among the vertebrates (after, Carroll, 1987)

the Palaeocene followed by a newer expansion. This expansion in the Eocene is less than for the Cretaceous, and then by slight reduction to the recent. It is however not sure that the availability of the records show the phenomenon of the groups as they really existed. It is also noteworthy that the Cretaceous was at least three times as long as the Eocene or any other Tertiary epoch, and might be expected to have more total known genera. These four modern types (orders) are all that remnants of the reptiles that were abundant throughout the Mesozoic era, with a gradual rise to a climax in size of the dinosaurs of the Jurassic and Cretaceous.

The Jurassic was a period of more uniform and equable conditions. There was essentially a single land mass of earth, Pangaea, with the Tethys Ocean to its east and the Pacific to

its west, forming one sea. The landmass was not very mountainous, the climate was milder than today with no polar ice-caps, so that the vegetation that cannot tolerate intense cold were found far to the north and south. During the Cretaceous shallow seas were more wider spread than the earlier periods since the Palaeozoic, the great equatorial oceans retained the sun's heat and gave a warm, damp climate. Then, a profound change affected the world including the populations of land and sea, between the end of the Cretaceous and the Eocene the change led to many extinctions and replacements. The disappearance of dinosaurs has made the Cretaceous-Tertiary boundary the famous of all transitions. A striking feature of the climatic changes was their rapidity and sharp alterations between the extremes. This fall might have been the cause of the striking changes in the flora as well as fauna at that time, which had been adapted to warmer conditions. The hot dry conditions of the Cretaceous were gradually reversed during the Palaeocene, Eocene and Oligocene (together known as Palaeogene). There were many oscillations, with sharper falls in the middle Eocene and leading in the Oligocene to glacial conditions in the Antarctica, for the first time since the Palaeozoic era. Correspondingly, the climate, which had been suitable for reptiles in the Mesozoic, became much less so in the early Tertiary, and the change had resulted in the disappearance of many prevalent forms. Further, almost all the reptiles of present day have changed quite markedly, apart from the *Shenodon* that show minimal change from their past ancestors. It is also noteworthy that the reptiles surviving today, though not of larger size nor obviously better suited for life than their Mesozoic ancestors, yet exist in considerable numbers and even in competition with the more evolved amniotes.

DISCUSSION

It appears from the records that the first study of fossil Reptilia from India was carried out by Cautley (1836) from Siwalik Hills. Since then a number of scientists have enriched the study of reptilian fossils viz., Falconer (1844, 55, 59, 68), Carter (1852, 54), Theobald (1860, 1877), Huxley (1861, 65, 69), Stoliczka (1861, 73), Blanford (1862, 65), Meyer (1865), Gray (1871), Lydekker (1876, 77, 80, 81, 82, 83, 85, 86, 87, 88, 89, 90), Feistmental (1880), Pilgrim (1908, 12), Cotter (1918), Matley (1918, 19, 21, 23, 29, 31), Dasgupta (1920, 22, 28, 31), Rao (1927, 32, 63), Mook (1932, 33), Huene (1933, 40, 42, 56, 60), Chakravorti (1934, 35), Ayenger (1937), Dubey (1946), Swinton (1947), Sukesheserala (1947, 49), Mukherjee (1949), Williams (1953), Rabinson (1960, 67), Tarlo (1960), Colbert (1961), Sahni, A. (1962, 75, 81, 82, 84, 88, 89, 94, 96), Tripathi (1962, 63, 64), Jain (1962, 64, 75, 77, 79, 80, 83, 85, 86, 89, 90, 97), Prasad (1963, 66, 82, 86), Pascoe (1964), Satsangi (1964), Trivedy (1966), Tewari (1969), Chatterjee (1967, 69, 74, 78, 80, 82, 86, 87, 96), Tandon (1971), Kutley (1972), Bhalla (1972), Kutty (1972, 74, 89), Badam (1973, 74, 77, 82, 84), Dassarma (1976, 77, 82, 91), Hughes (1977), Gaur (1980, 83), Burman (1982), Anon. (GSI) (1983), Suneja (1983), Yadagiri (1983, 84, 86, 88), Mohabey (1983, 84, 86, 87, 89, 96, 98), Gayet (1984), Sen (1984), Mathur (1985, 86, 87, 88), Shringarpure (1985),

Vijayarathi (1985), Gaffney (1986, 2000), Sabale (1986), Buffetaut (1987), Singh Rana (1987), Vianey-Liaud (1987), Prasad (1987), Bandyopadhyay (1987, 1988, 89, 92, 96, 98, 99, 2001, 02, 03), Ghevariya (1988), Massare (1988), Paul (1988), Russel (1988), Ayyasami (1990), Rana (1990), Bardet (1991), Raghvan (1991) Tiwari (1991), Sarkar (1991), Sengupta (1992), Rage (1992), Bajpai (1993, 96, 98), Lakshminarayana (1993), Srivastva (1995), Joshi (1995), Srinivasan (1996), Kohring (1996), Datta (1997, 2000), Das (1998), Roychowdhury (1970, 77, 95, 98, 99), Singh (1998), Satyanarayana (1999), Patnaik (1998), Ray (1998, 99, 2000, 01, 02, 03), Novas (1999, 2001, 04), Sen (2003, 05). These authors described several reptilian fossils and also made observations on stratigraphy and their evolutionary significance. Most of these fossils were recorded from Siwalik Hills, Panchet Beds, Raniganj, Tripura, Lameta Beds, Jabalpur, Tiki Beds, South Rewah, Kachchha, Narbada Valley (Gujarat), Kota, Maleri Beds of Maharashtra and Madhya Pradesh, Pranhita Godavari Valley, Karnool Cave in Andhra Pradesh, Ariyalur and Yerrapalli Formation of Tamil Nadu, Rajasthan, Punjab, Himachal Pradesh, Hariyana, Jammu & Kashmir. A reference of Chakravorty & Ghosh (1973) could be traced after finalization of the text and hence cited as 'Addendum' without disturbing the serial number of the references. These authors recorded *Lystrosaurus* sp. from the Karanpura Coalfield area of the Panchet Formation. There are at least eight Formations in Gondwana basins of India from where reptilian fauna are substantially known (vide Table 2).

Table-1 : Major Reptilian fossil bearing horizons of Gondwana basins of India (after Bandyopadhyay, 1999).

Localities		Kashmir	Pranhita-Godavari basin	Son Mahanadi basin	Satpura basin	Damodar basin
Age						
JURASSIC	Middle					
	Early		Kota			
				Dharmaram		
TRIASSIC	Late		Maleri	Tiki		
	Middle		Yerrapalli		Denwa	
	Early					Panchet
PERMIAN	Late	Mamal	Kundaram			
	Early					

It is believed that a large number of Mesozoic fossil beds are still to be explored which would reveal many more reptilian forms from India. It is hoped that this bibliographical account could present a current state of art of records of reptilian fossils from the Indian territory before the future workers of the subject.

SUMMARY

Reptiles are the first true land vertebrates that gave up the trend of going back to the aquatic medium for egg laying. The emergence of reptiles as the perfect land dwelling group offered a spectacular event in the evolutionary course of the vertebrates. Emerging from the old aquatic environment during the Carboniferous age, the reptiles became successfully adapted to the terrestrial habitats and flourished there into various types in the Mesozoic era. The reptiles dominated the earth during the early phase of their evolutionary history and represented today only by a few divergent groups. The evidence of various extinct reptilian forms was recovered from the earth's crust in different parts of the globe including India. Exploration of the fossils is yet far from exhaustive. A bibliographical account of fossil reptiles of India containing 289 references presented herein gives a state of progress of palaeontological study of reptiles in India with major rock beds of occurrence of the fossils.

ACKNOWLEDGEMENTS

Generous facilities have been provided by the Director, Zoological Survey of India, Kolkata for information inputs, to whom our sincere gratitudes are due. We acknowledge our debt also to the Director-General, Geological Survey of India, Kolkata for providing facilities to use their library. Prof. T.K. Roychowdhury, Dr. Saswati Bandyopadhyay and Dr. D.P. Sengupta of the Indian Statistical Institute (ISI) have suggested extensive moderation of the earlier draft (especially Table 2) for improvement of the text. The reviewer of the paper has pointed out many useful changes in earlier version of the paper. We express our sincere gratitude to them for the generosity and helpfulness.

BIBLIOGRAPHIC REFERENCES

1. **Anonymous** 1983 : A remarkable find-fossil dinosaur and their eggs, in Kheda district, Gujarat. *Geol. Surv. India News*, 14(4) : 12-13.
2. **Ayengar, N.K.N.** 1937. A note on the Maleri Beds of Hyderabad State (Deccan) and the Tiki Beds of South Rewah. *Rec. Geol. Surv. India*, Calcutta, 71(4) : 401-406.
3. **Ayyasami, K. & Das, I.** 1990 : Unusual preservation of a Cretaceous turtle fossil. *J. Geol. Soc. India*, Bangalore, 36(5) : 519-522.
4. **Badam, G.L.** 1973. Skull characters of *Crocodylus biporcatus* Cuvier *J. Geol. Soc. India*, Bangalore, 14(1) : 40-46.
5. **Badam, G.L.** 1974. Note on a partial skull of *Gavialis browni* Mook collected from Pinjore Formation (Lower Pleistocene) around Chandigarh. *Bull. Earth Sci.*, Poona, 3 : 1-6.
6. **Badam, G.L.** 1977. On a partial skull of *Crocodylus palaeindicus* Falconer from the Pinjore Formation of the Upper Siwalik Group. *Natur. India. Bull. Ind. Geol. Assoc.*, 10(2) : 29-35.
7. **Badam, G.L. & Salahuddin** 1982. Some new fossil sites on the Central Narmada Valley, Madhya Pradesh, India. *Curr. Sci.*, 51(18) : 898-899.
8. **Badam, G.L. Sathe, V.G. & Ganjoo, R.** 1984. New fossil finds from the Manjra Valley, Central Godavari Basin, India. *J. Geol. Soc. India*, Bangalore, 25(4) : 245-251.
9. **Bajpai, S.** 1996. Iridium anomaly in Anjar intertrappean beds and the K/T boundary. *Geol. Soc. India Mem.*, 37 : 313-319.
10. **Bajpai, S., Sahni, A., & Schleich, H.H.** 1998. Late Cretaceous gekkonid egg shells from the Deccan intertrappean of Kutch (India), 301-306. In, Schleich, H.H., Kastle, W. (eds). *Contribution to the herpetology of South-Asia (Nepal, India)*. Fuhlrott Museum, Wuppertal, I-VI, 1-320, ISBN 3-87429-404-8.
11. **Bajpai, S., Sahni, A. & Srinivasan, S.** 1993. Ornithoid egg shells from Deccan intertrappean beds near Anjar (Kachchh), Western India. *Curr. Sci.* (Bangalore) 64(1) : 42-45.
12. **Bandyopadhyay, S.** 1987. Vertebrate fossils from the Pranhita-Godavari valley of India. (Abstract) *Terra Cognita*, 7 (2-3) : 216.
13. **Bandyopadhyay, S.** 1988a. A kannemeyeriid dicynodont from the Middle Triassic Yerrapalli Formation. *Philos. Trans. R. Soc. Lond. Ser. B. (Biol. Sci.)* 320(1198) : 185-233.

14. **Bandyopadhyay, S.** 1988b. Vertebrate fossils from the Pranhita-Godavari valley of India with special reference to the Yerrapalli Formation. *Modern Geology*, **13** : 107-117.
15. **Bandyopadhyay, S.** 1989. The mammal-like reptile *Rechnisaurus* from the Triassic of India. *Palaeontology* (London), **32** : 305-312.
16. **Bandyopadhyay, S.** 1989. *Palaeontology*, **34** : 305. (not seen).
17. **Bandyopadhyay, S.** 1992. *Dinodontosaurs* Romer, 1943 (Reptilia, Synapsida) : conserved. *Bull. Zool. Nomenclat.*, **49** : 291.
18. **Bandyopadhyay, S. and Roy Chowdhury, T.** 1996. Beginning of the continental Jurassic in India. *Bull. Mus. North. Arizona*, **60** : 371-378.
19. **Bandyopadhyay, S. and Sengupta, D.P.** 1998. Middle Triassic vertebrate fauna from India. (Abstract) *J. Afr. Earth Sci.*, **27** : 16.
20. **Bandyopadhyay, S.** 1999. Gondwana Vertebrate Faunas of India, *PINSA*, **65**, A. No. **3** : 285-313.
21. **Bandyopadhyay, S. and Sengupta, D.P.** 1999. Middle Triassic vertebrates of India. *J. Afr. Earth Sci.*, **29**(1) : 233-241.
22. **Bandyopadhyay, S.** 2000. Triassic reptile faunas from the Pranhita-Godavari basin, Deccan, India. (Abstract Volume), 31st Session of International Geological Congress, Rio de Janeiro, Brazil.
23. **Bandyopadhyay, S. and Novas, F.** 2001. Abelisaurid pedal unguals from the Late Cretaceous of India. *Asociacion Palaeontologica Argentina, Publicacion Especial*, **7** : 145-150.
24. **Bandyopadhyay, S., Roy Chowdhury, T.K. and Sengupta, D.P.** 2002. Taphonomy of some Gondwana vertebrate assemblages of India. *Sediment. Geol.*, **147**(1-2) : 219-245.
25. **Bandyopadhyay, S., Gillette, D.D. and Sengupta, D.P.** 2003. Dentition of *Barapasaurus tagorei* from the Kota Formation (Early Jurassic) of India. (Abstract) *J. Vert. Paleontol.*, **23**(suppl. to No. 3) : 31-32.
26. **Bardet, N., Mazin, J.-M., Cariou, E., Enay, R. & Krishna, J.** 1991. Les Plesiosauria du Jurassique Superieur de la Province de Kachchh (Inde). *C. R. Acad. Sci. Ser. II (Mec-Phys-Chim. Sci.) Univers. Sci. Terre.*, **313**(11) : 1343-1347.
27. **Bhalla, S.N. & Dev, P.** 1972. A note on the occurrence of fossil vertebra from Baripada Beds (Miocene) Orissa. *J. Geol. Soc. India*, Bangalore, **13**(3) : 289-299.

28. **Blanford, H.F.** 1862. On the Cretaceous and other rocks of the South Arcot and Trichinopoly districts, Madras. *Mem. Geol. Surv. India*, Calcutta, 4 : 1-220.
29. **Blanford, H.F.** 1865. On the manner of occurrence of the Reptilian remains found in the Panchet beds of the Raniganj Coalfield and on probable conditions existing at the time when these rocks were deposited-*Palaeont. Indica*, Calcutta, (4) 1(1) : 1-3.
30. **Brink, A.S.** 1951. On the genus *Lystrosaurus* Cope. *Trans. Roy. Soc. S. Africa*, 33(1) : 107-120.
31. **Buckland, W.** 1829. Geological account of a series of Animal and Vegetable remains and of Rocks, collected by J. Crawfurd, Esq. On a voyage up the Irawadi to Ava, in 1826 and 1827. *Trans. Geol. Soc. Lond.* (2) 2(3) : 377-392. (Abst. *Proc. Geol. Soc.*, 2 : 71-73).
32. **Buffetaut, E.** 1987. On the age of the dinosaur fauna from the Lameta Formation (Upper-Cretaceous of Central India). *Newsl. Statigr.*, 18(1) : 1-6.
33. **Burman, D.S. & Jain, S.L.** 1982. The Braincase of the small sauropod dinosaur (Rep. : Saurischia) from the Upper Cretaceous Lameta Group, Central India, with review of Lameta Group Localities. *Annl. Carneg. Mus.*, 51(21) : 405-422.
34. **Carter, H.J.** 1852. Geology of the Island of Bombay. *J. Bombay Brch. Asiat. Soc.*, Bombay, 4 : 161-215.
35. **Carter, H.J.** 1854. Summary of the geology of India between the Ganges, the Indus and Cape Comorin. *J. Asiat. Soc. Bombay*, 5 : 179-335.
36. **Cautley, Capt. P.T.** 1836. Note on the fossil Crocodile of the Siwalik Hills. *Asiat. Res.*, Calcutta, 19(1) : 25-32.
37. **Cautley, Capt. P.T.** 1836. The fossil Gharial of the Siwalik Hills. *Asiat. Res.* Calcutta. 19(1) : 32-38.
38. **Cautley, Capt. P.T.** 1868. Appendix to the Memoirs on Crocodiles, Falconer's-*Pal. Mem.*, 1 : 355.
39. **Cautley, Capt. P.T. & Falconer, H.** 1837. Notice on the remains of a fossil monkey from the Tertiary strat. of the Siwalik Hills in the north of Hindustan-*Trans. Geol. Soc. Lond.*, 5(3) : 499-504.
40. **Chakravorti, D.K.** 1934. On the Stegosaurian humerus from the Lameta beds of Jubbulpore. *J. Geol. Min. Met. Soc. India*, Calcutta 6 : 75-79.
41. **Chakravorti, D.K.** 1935. Is *Lametasaurus indicus* an armoured dinosaur? *Amer. J. Sci.*, New Haven, (5) 30 : 138-141.

42. **Chatterjee, S.** 1967. New and associated phytosaur material from the Upper Triassic Maleri Formation of India : *Bull. Geol. Soc. India*, **4** : 108-110.
43. **Chatterjee, S.** 1967 : New discoveries contributing to the stratigraphy of the continental Triassic Maleri sediments of the Pranhita-Godavari Valley. *Bull. Geol. Soc. India*, **4** : 37-41.
44. **Chatterjee, S.** 1969. *Rhynchosaurus* in time and space. *Proc. Geol. Soc. Lond.*, **1658** : 203-208.
45. **Chatterjee, S.** 1974. A rhynchosaur from the Upper Triassic Maleri Formation of India. *Philos. Trans. R. Soc. (Ser. B)* **267(884)** : 209-261, 29 figs., 3 pls., 4 tabs.
46. **Chatterjee, S.** 1978. A primitive Parasuchid (Phytosaur) Reptile from the Upper Triassic Maleri Formation of India. *Palaeontology*, **21(1)** : 83-127.
47. **Chatterjee, S.** 1980a. The evolution of *Rhynchosaurs*. In : Ecosystemes continentaux du Mesozoique (Ed. P. Taquch). *Mem. Geol. Soc. Fr.*, **139(NS)** : 57-65.
48. **Chatterjee, S.** 1980b. *Malerisaurus*, a new eosuchian from the Late Triassic of India : *Phil. Trans. R. Soc. Lond.*, (Ser. B) **291(1048)** : 163-200.
49. **Chatterjee, S.** 1981. Review of "Aspects of Vertebrate History", In : Jacobs, L.L., (Ed.), Museum of Northern Arizona Press : *J. Vert. Palaeontol.*, **1** : 235-237.
50. **Chatterjee, S.** 1982. Phylogeny and classification of thecodont reptiles. *Nature*, **295** : 317-320.
51. **Chatterjee, S.** 1982. A new Cynodont Reptile from the Triassic of India. *J. Paleontol.* **56(1)** : 203-214.
52. **Chatterjee, S.** 1986. The Late Triassic Dockum Vertebrates : their Stratigraphic and Palaeobiographic Significances. In : K. Padian (ed.), *The beginning of the age of dinosaurs . faunal change across the Triassic-Jurassic boundary*. Cambridge University Press, Cambridge., : 139-150.
53. **Chatterjee, S.** 1987. A new theropod dinosaur from India with remarks on the Gondwana-Laurasia Connection in the Late Triassic. pp. 183-189. In : Mc.Kenzie, G.D. (ed.) *Gondwana Six : Stratigraphy, Sedimentology and Palaeontology*. American Geophysical Union, Washington, D.C. I-X, 1-250.
54. **Chatterjee, S., Jain, S.L., Kutty, T.S. & Choudhury, T.K.R.** 1969. On the Discovery of Triassic Cynodont reptiles from India. *Sci. & Cult. Calcutta*, **35** : 411-413.
55. **Chatterjee, S. & Roy Chowdhury, T.** 1974. Triassic Gondwana vertebrates from India. *Indian J. Earth. Sci.* Poona, **1 (1)** : 96-120, 10 figs. 3 tabs.

56. **Chatterjee, S., Jain, S.L., Kutty, T.S. & Roychoudhury, T.** 1980. Mesozoic Gondwana vertebrates of the Pranhita-Godavari Valley, Deccan-A review paper presented at the "Symposium on three decades of developments in Palaeontology and Stratigraphy in India" Hyderabad, December 10-12, 1980 : 1-30.
57. **Chatterjee, S., Jain, S.L., Kutty, T.S. and Roy Chowdhury, T.** 1987. Mesozoic Gondwana vertebrates of the Pranhita-Godavari Valley-a review. *Geol. Surv. India, Spec. Publ. No. 11* : 195-212.
58. **Chatterjee, S. & Majumdar, P.K.** 1987 : *Tikisuchus romeri*, a new Rausuchid Reptile from the Late Triassic of India. *J. Paleontol.*, **61**(4) : 787-793.
59. **Chatterjee, S. and Creisler, B.S.** 1994. *Alwalkeria* (Theropoda) *Morturneria* (Plesiosauria), new names for preoccupied *Walkeria*, Chatterjee 1987 and *Tuneria*. *J. Vert. Pal.* **14**(1) : 142.
60. **Chatterjee, S. & Rudra, D.K.** 1996. KT events in India : Impact, rifting, volcanism and dinosaur extinction. *Mem. Queensland Mus.*, **39**(3) : 489-532.
61. **Clift, W.** 1828. On the fossil remains of two new species of Mastodon and of other vertebrate Animals, found on the left-bank of Irawadi. *Trans. Geol. Soc. Lond.*, London (2) **2**(3) : 369-375.
62. **Colbert, E.H.** 1961. Relationships of the Triassic Maleri fauna. *J. palaeontol. Soc. India*, Lucknow, **3**(1958) : 68-81.
63. **Colbert, E.H.** 1978. Mesozoic tetrapods and the northward migration of India. *J. Palaeontol. Soc. India*, Lucknow., **20** : 138-135.
64. **Colbert, E. H.** 1984. Mesozoic reptiles, India and Gondwanaland. *Indian J. Earth Sci.*, **11** : 25-37.
65. **Cotter, G. & de P.** 1918. A revised classification of the Gondwana system. *Rec. Geol. Surv. India*, Calcutta, **48**(1) (1917) : 23-33.
66. **Das, I., Ayyasami, K., & Yadagiri, P.** 1998. A new species of Xinjiangchelyid (Testudines : Cryptodira : Xinjiangchelyidae) from the Cretaceous of Southern India. *Russian J. Herpetology*, **5**(2) : 151-155.
67. **Dasgupta, H.C.** 1922. Notes on the Panchet Reptile. *Calcutta University Sir Ashutosh Mookherjee Silver Jubilee Volume*, **2** : 237-241, 1 pl.. *Ann. Mag. Nat. Hist.* **7** : 935-938 fig. 1-3.
68. **Dasgupta, H.C.** 1928 a. (1926) Palaeontological notes on the Panchet-Beds at Deoli near Assansol. *J. Asiat. Soc. Beng.* Calcutta, (NS) **22** (4) : 215-217, 2 pls.

69. **Dasgupta, H.C.** 1928 b. Betrachian and Reptilian remains found in the Panchet-Beds at Deoli Bengal. *J. Asiat. Soc. Beng.* Calcutta, (NS) **24(4)** : 473-479.
70. **Dasgupta, H.C.** 1931. On a new Theropod Dinosaur (*Orthogoniosaurus matleyi*, n. gen., n. sp.) from the Lameta beds of Jabulpore. *J. Asiat. Soc. Beng.* Calcutta, (NS) **26(1)** : 367-369, 1-text fig.
71. **Dassarma, D.C. & Biswas, S.** 1976. Quaternary deposits of the Belan-Seoti Valleys, Allahabad District, Uttar Pradesh, *Proc. 6th Indian Coll. Micropal. Strat.*, : 33-39, pl. 1.
72. **Dassarma, D.C. & Biswas, S.** 1977. Newly discovered Late Quaternary Vertebrates from the terraced alluvial fills of the Son valley. *Ind. J. Earth. Sci.* **4(2)** : 122-136.
73. **Dassarma, D.C., Biswas, S. & Nandi, A.** 1982. Fossil vertebrates from the Late Quaternary deposits of Bankura, Burdwan & Purulia districts, West Bengal. *Mem. Geol. Surv. India, Palaeont. Indica*, **44** : 1-67.
74. **Dassarma, D.C., Vijayasarthi, G., Rao, C.V.N.K., Nath, T.T., Anantaraman, S. & Gururaja, M.N.** 1991 : An articulated rhynchosaur fossil from Maleri Formation (Upper Gondwana), Andhra Pradesh, and South India. *Curr. Sci.*, (Bangalore) **61(6)** : 405-407.
75. **Datta, P.M., Das, D.P.** 1997 (1998) : The first report of Cynodont filling from Triassic and discovery of monotreme from Upper Triassic. *Geol. Surv. India Newsl.*, **28(2-4)** : 41.
76. **Datta, P. M., Manna, P., Ghosh, S.C., & Das, D.P.** 2000 : The first Jurassic turtle from India. *Palaeontology*, (Oxford) **43(1)** : 99-109.
77. **Dubey, V.S. & Narain, K.** 1946. A note on the occurrence of Pterosauria in India. *Curr. Sci.*, Bangalore, **15 (10)** : 287-288.
78. **Efremov, J.A.** 1957. The Gondwana system of India and vertebrate life history in the Late Palaeozoic. *J. Palaeont. Soc. India*, Lucknow, **2** : 24-28.
79. **Evans, S.E., Prasad, G.V.R. & Mashas, P.K.** 2001. Rhynchocephalians (Diapsida, Lepidosauria) from the Jurassic Kota Formation of India. *Zool. J. Linn. Soc.*, **133**, II-3, : 309-334.
80. **Evans, S.E., Prasad, G.V.R. & Mashas, P.K.** 2002. Fossil Lizards from the Jurassic Kota Formation of India. *J. Vert. Palaeont.*, **22(2)** : 299-312.
81. **Falconer, H.** 1855. Remarks on the osteological characters and Palaeontological history of *Colossochelys atlas*. *J. Asiat. Soc. Beng.*, Calcutta, **22** : 173-178.
82. **Falconer, H.** 1868. Palaeontological Memoirs and notes with a Biographical Sketch. Ed. Charles Murchison, 8°, 2 vols., London.

83. **Falconer, H. & Cautley P.T.** 1844. On the *Colossochelys atlas* a fossil Tortoise from the Siwalik Hills. *Proc. Zool. Soc. London*, **12** : 154-155, & 84-88, *Ann. Mag. Nat. Hist.*, (1) **14** : 501-502, **15** : 55-59.
84. **Falconer, H. & Walker, H.** 1859 : Descriptive Catalogue of the fossil remains of vertebrata from the Siwalik Hills, the Nerbudda Prim Island etc. in the Museum of the Asiatic Society of Bengal. 8°, 261pp. Calcuta.
85. **Feistmantel, O.** 1880. Palaeontological notes from the Karharbari and South Rewah Coalfields. *Rec. Geol. Surv. India*, Calcutta, **13** : 176-190.
86. **Gaffney, E.S.** 1986. Triassic and Early Jurassic turtles, pp. 983-987. In : Padian, K. (ed.) *The beginning of the age of dinosaurs*. Cambridge University Press, Cambridge.
87. **Gaffney, E.S., Chatterjee, S. and Rudra, D.K.** 2001. *Kurmademys*, A new side-necked turtle (Pelomedusoides : Bothremydidae) from the Late Cretaceous of India. *Am. Mus. Novit.*, **3321** : 1-16.
88. **Gaur, R. & Chopra, S.R.K.** 1983. Palaeoecology of the Middle Miocene Siwalik sediments of a part of Jammu & Kashmir State (India). *Palaeogeogr. Palaeoclimat. Palaeoecol.*, **43**(3-4) : 313-327.
89. **Gaur, R. Vasishat, R.N. & Chopra, S.R.K.** 1980. Upper Siwalik vertebrate communities of the Indian subcontinent. *Recent Res. Geol.*, **5** : 206-218.
90. **Gayet, M., Rage, J.C. & Rana, R.S.** 1984 (1985). Nouvelles ichthyofaune et herpétofaune de Gitti Khadan, le plus ancien gisement connu du Deccan (Cretace / Paleocene) a microvertebrates. Implications Palaeogeographiques. *Mem. Soc. Geol. Fr.* (N.S.) No. **147** : 55-65.
91. **Gee, E.R.** 1930. New fossil localities within the Panchet series of the Raniganj Coalfield. *Rec. Geol. Surv. India*, Calcutta, **63**(2) : 205-207.
92. **Ghevariya, Z.G.** 1988. Intertrappean dinosaurian fossils from Anjar area, Kuchchh district, Gujarat. *Curr. Sci.*, (Bangalore) **57**(5) : 248-251.
93. **Gray, J.E.** 1871. Notice of a fossil Hydraspide (*Testudo leithie* Carter) from Bombay. *Ann. Mag. Nat. Hist.*, (4) **8** : 339-340.
94. **Huene, F. Baron Von** 1940. The Tetrapod fauna of the Upper Triassic Maleri Beds. *Mem. Geol. Surv. India, Palaeont. Indica*, Calcutta, (NS) **32**(1) : 1-42.
95. **Huene, F. V.** 1942. *Centralbl. Miner Geol. u Palaeont*, Jahrg., **B II** : 354. (not seen).
96. **Huene, F. F. Von** 1942. Die fauna terrestrischer Wirbelture der Oberen Trias in Zentralen Indian. *Cbl. Min. Geol. Palaeont.*, Stuttgart, **B 8** : 249-255.

97. **Huene, F. F. Von** 1960. Pre-Tertiary Saurians of Asia. *Vertebr. Plasiatica*, **2**(1958) : 201-207.
98. **Huene, F. B. Von & Matley, C.A.** 1933. The Cretaceous Saurischia and Ornithischia of the Central Provinces of India. *Palaeont. Indica*, Calcutta (NS) **21**(1) : 1-74, pls. 25.
99. **Huene, Freidich R, F. Von** 1956. Tertiary. A short review of the history of Pre-Tertiary Tetrapods. *J. Palaeont. Soc. India*, Lucknow, **1**(1) : 179-180.
100. **Hughes, B.** 1963. *S. Afr. J. Sc.*, **59**(5) : 221. (not seen).
101. **Hughes, T.W.H.** 1877. The Wardha valley Coalfield. *Mem. Geol. Surv. India*, Calcutta, **13**(1) : 1-154.
102. **Hungerbühler, A., Kutty, T.S. and Chatterjee, S.** (2002). New phytosaurs from Upper Triassic of india. *J. Vert. Paleontol.*, **22**, suppl. to No. **3**, 68A.
103. **Huxley, T.H.** 1861. Observations on some reptilian remains from Northwestern Bengal. *Q. J. Geol. Soc. London*, **17**(1) : 362.
104. **Huxley, T.H.** 1865. On a collection of vertebrate fossils from the Panchet Rocks, Raniganj, Bengal. *Mem. Geol. Surv. India, Palaeont. Indica*, Calcutta, (4) **1**(1) : 3-24.
105. **Huxley, T.H.** 1869 a. On Hyperodapedon. *J. Geol. Soc. London*, **25** : 138-152.
106. **Huxley, T.H.** 1869 b. On the classification of the Dinosauria, with observations on the Dinosauria of the Trias : Dinosauria from the Trias of the ural Mountains and India. *Q. J. Geol. Soc. London*, **25** : 48.
107. **Hyden, H.H.** 1921. General report of the Geological Survey of India for the year 1919. *Rec. Geol. Surv. India*, **51**(1) : 1-27.
108. **Jain, S.L.** 1974. Jurassic pterosaur from India : *J. Geol. Soc. India.*, **15**(3) : 330-335.
109. **Jain, S.L.** 1978. A new fossil pelomedusid turtle from the Upper Cretaceous Pisdura Sediments, Central India., *J. Palaeont. Soc. India*, **20** : 360-365.
110. **Jain, S.L.** 1980a. The Kota Formation : a member of the Indian Gondwanas, In : Olshevsky, G. (Ed.), *Mesozoic Vertebrate Life*, No. **1** : New Mesozoic Faunas. San Diego, California : 61-65.
111. **Jain, S.L.** 1980 b. The Continental Lower Jurassic Fauna from the Kota Formation, India. *Aspects of Vertebrate History* : 99-123.
112. **Jain, S.L.** 1981. Dinosaurs : Cold or Warm-blooded : *Science Reporter*, C.S.I.R., New Delhi, **18** : 586-592.

113. **Jain, S.L.** 1983. Spirally coiled 'Coprolites' from the Upper Triassic Maleri Formation, India. *Palaeontology*, **26**(4) : 813-829.
114. **Jain, S.L.** 1984. The Continental Lower Jurassic Fauna from the Kota Formation, India. 99-123. In : Jacobs, L.L. (Ed.) *Aspect of vertebrate history. Essays in honour of Edwin Harris Colbert*. Museum of Northern Arizona Press, U.S.A. **1980** : I-XIX, 1-407.
115. **Jain, S.L.** 1986 a. New pelomedusid turtle (Pleurodira : Chelonia) remains from Lameta Formation (Maestrichtian) at Dongargaon, Central India, and a review of Peleomedusids from India. *J. Palaeont. Soc. India*, **31** : 63-75.
116. **Jain, S.L.** 1986 b. Recent dinosaur discoveries in India, including egg-shells, nests and coprolites. (Abstract) First International Symposium on Dinosaur Tracks and traces (Ed., D.D. Gillette), : 17.
117. **Jain, S.L.** 1989. Recent dinosaur discoveries in India, including eggshells, nests and coprolites. 99-108. In : Gillette, D.D. & Lockley, M.G. (Eds.) *Dinosaur tracks and traces*. Cambridge University Press, New York. : I-XVII, 1-454.
118. **Jain, S.L.** 1990. An Upper Triassic vertebrate assemblage from Central India. *Bull. Indian Geol. Assoc.*, **23**(2) : 67-84.
119. **Jain, S.L.** 1996. Aspect of vertebrate fossils from Pranhita-Godavari Valley with emphasis on dinosaur discoveries. *J. Palaeontol. Soc. India.*, **41** : 1-16.
120. **Jain, S.L., Bandyopadhyay, S.** 1997. New titanosaurid (Dinosauria : Sauropoda) from the Late Cretaceous of Central India. *J. Vert. Paleontol.*, **17**(1) : 114-136.
121. **Jain, S.L. and Burman, D.S.** 1982. A small sauropod dinosaur (Reptilia : Saurischia) braincase from the Upper Cretaceous Lameta Group of Central India. *Annls Carnegie Mus. Nat. Hist.*, **51** : 405 -422.
122. **Jain, S.L., Kutty, T.S., Roychowdhury, T. & Chatterjee, S.** 1975. The sauropod dinosaur from the Lower Jurassic Kota Formation of India. *Proc. Roy. Soc. Lond. Ser. A.*, **188** : 221-228.
123. **Jain, S.L., Kutty, T.S., Roy Chowdhury, T. & Chatterjee, S.** 1977. Some characteristics of *Barapasaurus tagorei*, a sauropod dinosaur from the Lower Jurassic of Deccan, India. (Abstract) Fourth International Gondwana Symposium. Calcutta, : 31-32.
124. **Jain, S.L., Kutty, T.S., Roychowdhury, T. & Chatterjee, S.** 1979. Some characteristics of *Barapasaurus tagorei*, a sauropod dinosaur from the Lower Jurassic of Deccan, India. *Fourth. Int. Gond. Symp.* Calcutta (1977) **1** : 204-216.
125. **Jain, S.L. & Sahni, A.** 1983. Some Upper Cretaceous vertebrates from Central India and their palaeogeographic implications; In:; Maheswari, H.K. (Ed.), *Cretaceous of*

India : Palaeoecology, Palaeogeography and Time boundaries; Indian Association of Palynostratigraphers Symposium, BSIP, Lucknow, India : 66-83.

126. **Jain, S.L. & Sahni, A.** 1985. Dinosaurian egg shell fragments from the Lameta Formation at Pisdura, Chandrapur district, Maharashtra. *Geoscience J.* **6**(2) : 211-220.
127. **Jain, S.L., Robinson, P.L. & Roychowdhury, T.K.** 1962. A new Vertebrate Fauna from the early Jurassic of the Deccan, India. *Nature*, London, **194**(4830) : 755-757.
128. **Jain, S.L., Robinson, P.L. & Roychowdhury, T.K.** 1964. A new Vertebrate Fauna from the Triassic of the Deccan, India. *J. Geol. Soc. London*, **120** : 115-124, 3 figs.
129. **Jain, S.L. and Roy Chowdhury, T.** 1987. Fossil vertebrate from the Pranhita-Godavari Valley (India) and their stratigraphic correlation. *Geophysical Mnograph*, **41** : 219-228.
130. **Joshi, A.V.** 1995. New occurrence of dinosaur eggs from Lameta Rocks (Maestrichtian) near Bagh, Madhya Pradesh. *J. Geol. Soc. India*, **46**(4) : 439-443.
131. **King, G.M.** 1992. *Ter. Nov.*, **4** : 633. (not seen)
132. **Kohring, R., Bandel, K., Kortum, D. & Parthasarthy, S.** 1996. Shell structure of the dinosaur egg from the Maastrichtian of Ariyalur (Southern India). *News Jahrbuch Für Geologic and Palaeontologic Monatshefte*, **1** : 48-64.
133. **Kutty, T.S.** 1971. Two faunal association from the Maleri Formation of Pranhita-Godavari Valley. *Bull. Geol. Soc. India*, **12**(1) : 63-67.
134. **Kutty, T.S.** 1972. Permian Reptilian fauna from India. *Nature*, London, **237** (5356) : 462-463, 2 figs.
135. **Kutty, T.S. and Roy Chowdhury, T.** 1972. The Gondwana sequence of the Pranhita-Godavari Valley, India, and its vertebrate faunas : *Second Symposium on Gondwana Stratigraphy*, S. Africa : 303-308.
136. **Kutty, T.S. & Sengupta, D.P.** 1989. The Late Triassic Formations of the Pranhita Godavari Valley and their vertebrate faunal succession-A Reappraisal. *Ind. J. Earth Sci.*, **16** : 189-206.
137. **Lakshminarayana, K.V. & Purnasai, K.K.** 1993 : On Turtles and Tortoise. *Cobra* (Madras) **14** : 3-11.
138. **Lapparent, A.F. de** 1957. The Cretaceous Dinosaurs of Africa and India. *J. Palaeont. Soc. India*, Lucknow, **2** : 109-112.
139. **Lull, R.S.** 1944. Fossil *Gavialis* from North India. *Amer. J. Sci.*, New Haven. **242**(8) : 417-430, 4 figs.

140. **Lydekker, R.** 1876. Occurrences of *Plesiosaurus* in India. *Rec. Geol. Surv. India*, Calcutta, 9(4) : 154.
141. **Lydekker, R.** 1877. Notices of new and other vertebrate from Indian Tertiary and Secondary Rocks. *Rec. Geol. Surv. India*, Calcutta, 10(1) : 30-43.
142. **Lydekker, R.** 1879 a. Indian Pre-Tertiary Vertebrate.-Reptilia and Batrachia. *Mem. Geol. Surv. India, Palaeont. Indica*, Calcutta, (4) 1(3) : 1-36, 6 pls. (Abst. New. Jahrb. F. Mim. 1879).
143. **Lydekker, R.** 1879 b. Popular Guide to the Geological Collections in the Indian Museum, Calcutta. No. 1-Tertiary Vertebrate Animals. 80, Calcutta.
144. **Lydekker, R.** 1880. A sketch of the history of the fossil vertebrate of India. *J. Asiat. Soc. Beng.* Calcutta, 49(2) : 8-40.
145. **Lydekker, R.** 1881. Note on some Gondwana Vertebrates. *Rec. Geol. Surv. India*, Calcutta, 14 : 174-178.
146. **Lydekker, R.** 1882. Note on some Siwalik and Narbada Fossils. *Rec. Geol. Surv. India*, Calcutta, 15(2) : 102-107.
147. **Lydekker, R.** 1883. Synopsis of the fossil Vertebrata of India. *Rec. Geol. Surv. India*, Calcutta, 16(2) : 61-63.
148. **Lydekker, R.** 1884 a. Catalogue of Vertebrate fossils from the Siwaliks of India in the Science and Arts Museum, Dublin. *Trans. R. Dub. Soc.*, 3 : 69-86.
149. **Lydekker, R.** 1884 b. Note on the occurrence of the genus *Lyttoria* Waag, in the Kuling series of Kashmir. *Rec. Geol. Surv. India*, 17 : 37.
150. **Lydekker, R.** 1885 a. Indian Tertiary and Post Tertiary Vertebrata. Siwalik and Narbada Chelonia. *Rec. Geol. Surv. India, Palaeont. Indica*, Calcutta (10) 3(6) : 155-208.
151. **Lydekker, R.** 1885 b. The Reptilia and Amphibia of the Maleri and Denwa Groups. *Rec. Geol. Surv. India, Palaeont. Indica*, Calcutta, (4) 1(5) : 1-38.
152. **Lydekker, R.** 1885 c. Catalogue of the Remains of Siwalik Vertebrata contained in the Geological Department of Indian Museum, Calcutta. Part-I, Mammalia (1886) Part-II, Reptilia and Pisces 80, Calcutta.
153. **Lydekker, R.** 1885 d. Indian Tertiary and Post Tertiary vertebrata, Siwalik and Narbada Chelonia, *Rec. Geol. Surv. India, Palaeont. Indica*, Calcutta, (10) 3(6) : 155-210. pl. 18-27.
154. **Lydekker, R.** 1886 a. "Siwalik Crocodilia, Lacertilia and Ophidia" *Rec. Geol. Surv. India, Palaeont. Indica*, Calcutta (10) 3(7) : 209-240.

155. **Lydekker, R.** 1886 b. The fauna of the Karnul Caves. *Rec. Geol. Surv. India, Palaeont. Indica*, Calcutta (10) 4(2) : 23-58. (With addendum to pt. 1).
156. **Lydekker, R.** 1886 c. On a new *Emydine* Chelonian from the Pliocene of India. *Q. J. Geol. Soc. London*, 42 : 540-541. (Abst. *Geol. Mag.* 3 : 380).
157. **Lydekker, R.** 1886 d. The fauna of Karnool Cave. *Rec. Geol. Surv. India, Palaeont. Indica*. (10) 7(2) : 23-58 (with addendum to pt. I).
158. **Lydekker, R.** 1887 a. Eocene Chelonia from the Salt Range. *Rec. Geol. Surv. India, Palaeont. Indica*, Calcutta (10) 4(3) : 59-65, pl. 12-13. (Abst. *Geol. Mag.* 5 : 229-230).
159. **Lydekker, R.** 1887 b. The fossil Vertebrata of India. *Rec. Geol. Surv. India, Calcutta*, 20(2) : 51-80.
160. **Lydekker, R.** 1887 c. On certain Dinosaurian Vertebrae from the Cretaceous of the India and the Is. of Wight. *Q. J. Geol. Soc. London*, 43 : 156-160. (Abst. *Geol. Mag.* 4 : 93, *New Jahrb.*).
161. **Lydekker, R.** 1888. Notes on Indian fossil Vertebrates. *Rec. Geol. Surv. India, Calcutta*, 21(4) : 145-148.
162. **Lydekker, R.** 1889 a. On the Generic position of the so-called *Plesiosaurus indicus*. *Rec. Geol. Surv. India, Calcutta*, 22(1) : 49-51, (Abst. *New Jahrb.*) *J. Min.* 1891.
163. **Lydekker, R.** 1889 b. Notes on Siwalik and Narbada Chelonia. *Rec. Geol. Surv. India, Calcutta*, 22(1) : 56-58.
164. **Lydekker, R.** 1889 c. On the Land Tortoises of the Siwaliks. *Rec. Geol. Surv. India, Calcutta*, 22(4) : 209-212.
165. **Lydekker, R.** 1889 d. On the Tortoises described as *Chaibassia*. *J. Asiat. Soc. Bengal*, Calcutta, 58(2) : 327-333.
166. **Lydekker, R.** 1889 e. Catalogue of the fossil Reptilia and Amphibia. *Brit. Mus. Nat. Hist.*, Part 3 : 1-239, illus. London (Trustees, Brit. Mus.).
167. **Lydekker, R.** 1890 a. On the pectoral and pelvic girdles and skull of Indian Dicynodonts. *Rec. Geol. Surv. India, Calcutta*, 23(1) : 17-20.
168. **Lydekker, R.** 1890 b. Catalogue of the fossil Reptilia and Amphibia. *Brit. Mus. Nat. Hist.*, Part 4, XXXIII + 295 + 811, illus. London (Trustees, Brit. Mus.).
169. **Lydekker, R. & Woodward, A. Smith.** 1890. Note on certain Vertebrate remains from the Nagpur District (with description of a fish skull by a A. Smith Woodward, F.G.S.), *Rec. Geol. Surv. India, Calcutta*, 23 : 20-24.

170. **Lydekker, R.** 1890. Note on certain Vertebrate remains from the Nagpur District. Part of a Chelonian plastron from Pisdura. *Rec. Geol. Surv. India*, **23** : 22-23.
171. **Massare, J.A.** 1988. Swimming capabilities of Mesozoic marine reptiles : Implications for method of predation. *Palaeobiology*, **14**(2) : 187-205.
172. **Mathur, U.B.** 1987. Did the dinosaur cross over to Tertiary in India. *Curr. Sci. (Bangalore)* **56**(12) : 606-607.
173. **Mathur, U.B.** 1988. Radioactive dinosaur bones. *Curr. Sci. (Bangalore)* **57**(11) : 606-608.
174. **Mathur, U.B., Pant, S.C., Mehra, S. & Mathur, A.K.** 1985. Discovery of dinosaurian remains in Middle Jurassic of Jaisalmer, Rajasthan, Western India. *Bull. Indian Geol. Assoc.* **18**(2) : 59-65.
175. **Mathur, U.B., Pant, S.C.** 1986. Sauropod dinosaur humeri from Lameta Group (Upper Cretaceous-? Palaeocene) of Kheda district, Gujarat. *J. Palaeont. Soc. India*, **31** : 22-25.
176. **Mathur, U.B. & Pant, S.C.** 1988. Bone histology as a tool for the search of dinosaurs. *J. Geol. Soc. India*, **31**(3) : 299-304.
177. **Mathur, U.B. & Srivastva, S.** 1987. Dinosaur teeth from Lameta Group (Upper Cretaceous) of Kheda district, Gujarat. *J. Geol. Soc. India*, **29**(6) : 554-566.
178. **Matley, C.A.** 1918. Note on some Dinosaurian Remains recently discovered in the Lameta Beds at Jubbulpore. *Proc. Asiat. Soc. Bengal, Calcutta, (NS)* **14** : 185.
179. **Matley, C.A.** 1919. On the remains of Carnivorous Dinosaurs from the Lameta Beds at Jubbulpore. *Proc. Asiat. Soc. Bengal, Calcutta, (NS)* **15** : 198-199.
180. **Matley, C.A.** 1921. On the Stratigraphy, Fossils and Geological relationship of the Lameta Beds of Jubbulpore. *Rec. Geol. Surv. India, Calcutta*, **53**(2) : 142-164.
181. **Matley, C.A.** 1923. Notes on an Armoured Dinosaur from the Lameta Beds of Jubbulpore. *Rec. Geol. Surv. India, Calcutta*, **55**(2) : 105-109 (with plates 8-13).
182. **Matley, C.A.** 1929. The Cretaceous Dinosaurs of the Trichinopoly District and the Rocks Associated with them. *Rec. Geol. Surv. India, Calcutta*, **61**(4) : 337-339.
183. **Matley, C.A.** 1931. Recent discoveries of dinosaurs in India. *Geol. Mag., London.*, **68** : 274-282.
184. **Mazumder, P.K.** 1974. A free-standing mount of an Indian rhynchosaur : *Curator*, **17** : 50-55.

185. **Mazumder, P.K.** 1987. The first mount of an Indian dinosaur : *Curator*, **30** : 25-30.
186. **Medlicott, H.B.** 1872. Note on the Lameta or Infratrappean Formation of Central India, *Rec. Geol. Surv. India*, Calcutta, **5** : 115-120.
187. **Meyer, H. Von.** 1865. Ueber die fossilen Reste von Wirbelthieren, welche die Herren von Schlagintweit von ihren Reisen in Indien und Hoch-Hsien mitgebracht haben. *Palaeontographica*, **15** : 1-40.
188. **Mohabey, D.M.** 1983. Note on the occurrence of dinosaurian fossil eggs from Infratrappean Limestone in Keda district, Gujarat. *Curr. Sci.*, **52**(24) : 1194.
189. **Mohabey, D.M.** 1984. The study of dinosaurian eggs from Infratrappean Limestone in Kheda district, Gujarat. *J. Geol. Soc. India*, **25**(6) : 329-337.
190. **Mohabey, D.M.** 1986. Note on dinosaur footprint from Kheda district, Gujarat. *J. Geol. Soc. India*, **27**(5) : 456-459.
191. **Mohabey, D.M.** 1987. Juvenile Sauropod dinosaur from Upper Cretaceous Lameta Formation of Panchmahal district, Gujarat, India. *J. Geol. Soc. India*, **30**(3) : 210-216.
192. **Mohabey, D.M.** 1989. The braincase of a dinosaur from the Late Cretaceous Lameta Formation, Kheda district, Gujarat, Western (sic) India. *Indian J. Earth Sci.*, **16**(2) : 132-135.
193. **Mohabey, D.M.** 1996. A new Oospecies *Megaloolithus matleyi* from the Lameta Formation (Upper Cretaceous) of Chandrapur district, Maharashtra, India and general remarks on the Palaeoenvironment and nesting behaviour of dinosaurs. *Cretaceous Res.*, **17**(2) : 183-186.
194. **Mohabey, D.M.** 1998. Systematics of Indian Upper Cretaceous dinosaur and Chelonian eggshells. *J. Vert. Palaeontol.*, **18**(2) : 348-362.
195. **Mohabey, D.M. & Mathur, U.B.** 1989. Upper Cretaceous dinosaur eggs from new localities of Gujarat, India. *J. Geol. Soc. India*, **33**(1) : 32-37.
196. **Mook, C.C.** 1932. A new species of fossil Gavial from the Siwalik Beds. *Amer. Mus. Nov.*, **514** : 1-5, 2 figs.
197. **Mook, C.C.** 1937. A skull with Jaws of *Crocodylus sivalensis* Lydekker. *Amer. Mus. Nov.*, **670** : 1-10.
198. **Mukherjee, P.N.** 1949. Fossil Tortoise shell from Worli Hill, Bombay. *Proc. 35th Indian Sci. Congr.*, Part 3 : 152 (Abstract).
199. **Novas, F. E. and Bandyopadhyay, S.** 1999. New approaches on the Cretaceous theropods from India. *VII International Symposium on Mesozoic Terrestrial Ecosystems* (Abstract). : 46-47, Buenos Aires.

200. **Novas, F.E. and Bandyopadhyay, S.** 2001. Abelisaurid Pedal unguals from the Late Cretaceous of India. seventh International Symposium on Mesozoic terrestrial Ecosystems, Buenos Aires : 145-149.
201. **Novas, F.E., Agnolin, F.L. & Bandyopadhyay, S.** 2004. Cretaceous theropods from India : A review of specimens described by Huene and Matley (1933). *Revista del Museo Argentino de Ciencias Naturales (N.S.)* 6(1) : 67-103.
202. **Olsen, P.E. and Galton, P.M.** 1977. *Science*, 197 : 983. (not seen).
203. **Padian, K. (Ed.)** *The beginning of the Age of Dinosaurs*. Cambridge, Cambridge University Press (1986) : 178.
204. **Pascoe, E.H.** 1964. *A Manual of the Geology of India and Burma*. vol. 3 Govt. of India publ., Delhi (1963) : XXIV, 1345-2130, 2 pls.
205. **Patnaik, R. & Schleich, H.H.** 1998. Fossil microreptiles from Pliocene Siwalik sediments of India. 295-300. In : Schleich, H.H., Kastle, W. (Eds.) *Contribution to the herpetology of South-Asia (Nepal, India)*. Fuhlorott Museus, Wuppertal : I-VI, 1-320, ISBN 3-87429-404-8.
206. **Paul, G.S.** 1988. Physiological, Migratorial, Climatological, Geophysical, Survival and Evolutionary implications of Cretaceous polar dinosaurs. *J. Paleontol.*, 62(4) : 640-652.
207. **Pilgrim, G.E.** 1912. The vertebrate fauna of the Gaj series in the Bugti Hills and the Punjab. *Rec. Geol. Surv. India, Palaeont. Indica* Calcutta, (NS) 4(2) : 1-83, pls. I-XXX, 1 map.
208. **Prasad, G.V.R. & Sahni, A.** 1987. Coastal-plain microvertebrate assemblage from the terminal Cretaceous of Asiafabad, Peninsular India. *J. Palaeontol. Soc. India*, 32 : 5-19.
209. **Prasad, G.V.R. & Singh, V.** 1991. Microvertebrates from the infratrappean beds of Rangareddi district, Andhra Pradesh and their biostratigraphic significance. *Bull. Indian Geol. Assoc.*, 24(1) : 1-19.
210. **Prasad, K.N.** 1966. Some observations of the Cretaceous dinosaurs of India. *Bull. Geol. Surv. India*, Spec. No. 1966 : 41 (Abstract).
211. **Prasad, K.N.** 1982. Studies on Neogene Quarternary Boundary in India and adjacent countries. *Proc. K. ned. Akad. Wet., (Palaeont. Geol. Phys. Chem.)* 85(4) : 455-468.
212. **Prasad, K.N. & Satsangi, P.P.** 1963. On a new fossil Chelonian from the Siwalik Beds of Himachal Pradesh. *Indian Miner.*, 16 : 424-425.

213. **Prasad, K.N. & Yadagiri, P.** 1986. Pleistocene Cave fauna, Kurnool district, Andhra Pradesh. *Rec. Geol. Surv. India*, **115**(5) : 71-77.
214. **Rage, J.C. & Prasad, G.V.R.** 1992. New snakes from the Late Cretaceous (Maastrichtian) of Naskal, India. *News Jahrb. Geol. Palaeontol. Abh.*, **187**(1) : 83-97.
215. **Raghvan, P.** 1991. Fossil Frogs and a Lizard from the Basal Pinjor Formation (sub-Himalaya), Haryana, India. *Res. Bull. Punjab Univ. SC.*, **42**(1-4) : 1-6.
216. **Rana, R.S.** 1990. Aligatorine teeth from the Deccan intertrappean beds near Rangapur, Andhra Pradesh, India. Further evidence of Laurasiatic elements. *Curr. Sci.*, (Bangalore) **59**(1) : 49-51.
217. **Rao, C.R.N. & Seshachar, B.R.** 1927. A short note on certain fossils taken in the Ariyalur area (S.India). *J. Mysore Univ.*, **1**(2) 1927 : 144 –152. Figs. 1-9.
218. **Rao, C.N. & Shah, S.C.** 1963. On the occurrence of Pterosaur from the Kota-Maleri beds of Chanda district, Maharashtra. *Rec. Geol. Surv. India*, **92**(2) (1963) : 315-318, pl. 1.
219. **Rao, L.R.** 1932. On a reptilian vertebra from the South India Cretaceous. *Amer. J. Sci.* New Haven (5) **24** : 221-224, 2 photographs.
220. **Ray, S.** 1997. *J. Geol. Soc. India*, **50**(5) : 633. (not seen).
221. **Ray, S.** 1998a. A Permian vertebrate fauna from India., (Abstract) *J. Afr. Earth Sci.*, **27** (1A), : 151.
222. **Ray, S.** 1998b. Endothiodonts from India. (Abstract) *J. Afr. Earth Sci.*, **27**(1A), :151.
223. **Ray, S.** 1999. Permian reptilian fauna from the Kundaram Formation, Pranhita-Godavari Valley, India. *J. Afr. Earth Sci.*, **29**(1) : 211-218.
224. **Ray, S.** 1999. Permian faunal signatures in the Pranhita-Godavari Valley, India. (Abstract) Workshop on “Geology of the Pranhita-Godavari Valley : Current Status and Future Directions”, ISI, Calcutta, : 34.
225. **Ray, S.** 2000a. Vertebrate faunal association of the Permian India. (Abstract Volume) 31st Session of International Geological Congress, Rio de Janeiro, Brazil.
226. **Ray, S.** 2000b. Feeding mechanism of endothiodont dicynodonts. (Abstract Volume) 11th Biennial Conference of the Palaeontological Society of Southern Africa, Pretoria, : 10.
227. **Ray, S.** 2000c. Endothiodont dicynodonts from the Late Permian Kundaram Formation, India. *Palaeontology*, Oxford, **43**(2) : 375-404.

228. **Ray, S.** 2001. Small dicynodonts from the Permian of India. *Palaeontol. Res.*, 5(3) : 177-191.
229. **Ray, S. and Bandyopadhyay, S.** 2003. Late Permian vertebrate community of the Pranhita-Godavari Valley. *J. Asian Earth Sci.*, 21(1) : 643-654.
230. **Ray, S., Chinsamy, A. & Bandyopadhyay, S.** 2002. An assessment of *Lystrosaurus murrayi* osteohistology. VIII International Symposium on Mesozoic Terrestrial Ecosystems, Cape Town, : 11.
231. **Robinson, P.L.** 1960. Some new vertebrate fossils from the Panchet Series of West Bengal. *Nature*, London, 182(1958) : 1722-1723.
232. **Robinson, P.L.** 1967. Triassic vertebrates from lowland and upland. *Sci. Cult.*, 33 : 169-173.
233. **Robinson, P.L.** 1971. A problem of faunal replacement on Permo-Triassic Continents. *Palaeontology*, 14 : 131-153.
234. **Roychowdhury, M., Saha, T.K., Guha, D., & Munshi, R.L.** 1998. New record of sauropod nest-sites in Lameta Formation from Jhalod, Panchmahals district, Gujarat. *J. Geol. Soc. India*, 52(6) : 643-650.
235. **Roychowdhury, T.** 1970. Two new dicynodonts from the Triassic Yerrapalli Formation of Central India. *Palaeontology*, 13 : 132-144.
236. **Roychowdhury, T., Bandyopadhyay, S. and Sen, K.** 1999. Recent discoveries of fossil vertebrates from the Pranhita-Godavari, Deccan, India. Workshop on "Geology of the Pranhita-Godavari Valley : Current Status and Future Directions", (Extended Abstract) : 35-37, Calcutta.
237. **Roychowdhury, T., Kutty, T.S., Bose, U. & Satsangi, P.P.** 1977. Gondwana sequence of Pranhita-Godavari Valley, Guide to Excursion No. 6. *Fourth International Gondwana Symposium*. Calcutta : 1-3.
238. **Roychowdhury, T. and Ray, S.** 1995. Evolution of the herbivorous feeding system in land vertebrates. *J. Bot. Soc. India.*, 49(1) : 1-9.
239. **Russell, D.A.** 1988. Life and Times of the dinosaurs. How did they live? Why did they disappear? *Fld. Mus. Nat. Hist. Bull.*, 59(9) : 8-29.
240. **Sabale, A.B. & Vijayasarithi, G.** 1986. Crocodylian records from the Miocene of Kuchchh, India. *J. Geol. Soc. India*, 27(5) : 405-410.
241. **Sahni, A.** 1981 (1982). Dental & skeletal micro and ultrastructure of Indian Tertiary vertebrates. *Proc. Indian Colloq. Micropalaeont. Stratigr.*, 9 : 109-122.

242. **Sahni, A.** 1989. Palaeoecology and Palaeoenvironments of the Late Cretaceous dinosaur eggshell sites from peninsular India. pp.179-185. In : Gillette, D.D. & Lockley, M.G. (Eds). *Dinosaur tracks and traces*. Cambridge University Press, New York : I-XVII, 1-454.
243. **Sahni, A., Batra, R.S. & Bhatia, S.B.** 1984. Vertebrate assemblage from the Upper Subathu (Middle Eocene) of the Bilaspur area, Himachal Pradesh, India. *Proc. Indian Colloq. Micropalaeont. Stratigr.*, **10** : 357-368.
244. **Sahni, A., Bhatia, S.B., Hartenberger, J. L., Jaeger, J.J., Kumar, K., Sudre, J. & Vianey-Leaud, M.** 1981 (1982). Vertebrates from the Subathu Formation and comments on the Biogeography of Indian subcontinent during the Early Palaeogene. *Bull. Soc. Geol. Fr.*, **23**(6) : 689-695.
245. **Sahni, A., Bhatia, S.B., Hartenberger, J. L., Jaeger, J.J., Kumar, K., Sudre, J. & Vianey-Leaud, M.** 1981. Vertebrates from the type section of the Subathu Formation and comments on the Palaeobiogeography of the Indian subcontinent during the Early Palaeogene. *Bull. Indian Geol. Assoc.*, **14**(2) : 89-100.
246. **Sahni, A. Gupta, V.J.** 1982. Cretaceous egg-shell fragments from the Lameta Formation, Jabalpur, India. *Bull. Indian Geol. Assoc.*, **15**(1) : 85-88.
247. **Sahni, A. & Khosla, A.** 1994. Palaeobiological, Taphonomic and Palaeoenvironmental aspect of Indian Cretaceous sauropod nesting sites. *Gaia*, **10** Dezembro : 215-223.
248. **Sahni, A. & Mishra, V.P.** 1975. Lower Tertiary vertebrates from Western India. *Monogr. Palaeont. Soc. India*, No. **3** : 1-48.
249. **Sahni, A., Tandon, S.K., Jolly, A., Bajpai, S., Sood, A. & Srinivasan, S.** 1994. Upper Cretaceous dinosaur eggs and nesting sites from the deccan volcano sedimentary province of peninsular India. 204-226. In : Karpenter, K., Hirsch, K.F. & Horner, J.R. (Eds). *Dinosaur eggs and babies*. Cambridge University Press, Cambridge : I-X, 1-372.
250. **Sahni, A., Venkatachala, B.S., Kar, R.K., Rajanikanth, A. & Prakash, T.** 1996. New palynological data from the Deccan intertrappean beds : implications for the latest record of dinosaurs and synchronous initiation of volcanic activity in India. *Geol. Soc. India Mem.*, **37** : 267-283.
251. **Sahni, M.R.** 1962. A fossil reptilian egg from the Uttatturs (Cenomanian) of Southern India being the first record of a vertebrate fossil egg in India. *Rec. Geol. Surv. India*, **87**(4) : 671-674, pl. 1.
252. **Sahni, M.R. & Khan, E.** 1988. *Pleistocene vertebrate fossils and prehistory of India*. Books & Books, New Delhi 1988 : I-VI, 1-80.

253. **Sarkar, A., Bhattacharya, S.K. & Mohabey, D.M.** 1991. Stable-isotope analysis of dinosaur eggshells : Palaeoenvironmental implications. *Geology* (Boulder) **19**(11) : 1068-1071.
254. **Satsangi, P.P.** 1964. A note on Chasmatosaurus from the Panchet Series of Raniganj Coal field, India. *Curr. Sci.*, **33** : 651-652, 3 figs.
255. **Satsangi, P.P.** 1967. A preliminary note on the Siwalik vertebrates of Jammu Udhampur and Ranenaga areas of J & K. State. *Indian Miner.* **18**(1964) : 91.
256. **Satsangi, P.P.** 1987. *Sp. Pub. Geol. Surv. India.*, **1**(11) : 165. (not seen).
257. **Satyanarayana, K., Dasgupta, D.K., Dave, A., & Das, K.K.** 1999. Record of skeletal remains of dinosaur from Early Middle Jurassic of Kuar be, Kutch, Gujarat. *Curr. Sci.*, (Bangalore) **77**(5) : 639-641.
258. **Sen, K.** 2003. *Pamelaria dolichotrachelea*, a new prolacertid reptile from the Middle Triassic of India. *J. Asian Earth Sci.*, **21**(1) : 663-681.
259. **Sen, K.** 2005. A new Rausuchian Archosaur from the Middle Triassic of India. *Palaeontology*, **48**(1) : 185-196.
260. **Sen, P.K. & Banerjee, M.** 1984. On the occurrence of reptilian remains in the Peat bed of Barrackpore, 24 Parganas, West Bengal. *J. Palaeont. Soc. India*, **29** : 47-51.
261. **Sengupta, D.P.** 1992. *Metaposaurus maleriensis* from the Tiki Formation of Son-Mahanadi valley of the Central India. *Indian J. Geol.*, **64**(3) : 300-305.
262. **Shringarpure, D.M.** 1985. Evidence predicting existence of trionychid turtle in the intertrappean rocks of Saurashtra (Gujarat state). *Curr. Sci.*, **54**(21) : 1114-1115.
263. **Singh Rana, R.** 1987. Dynosaurid Crocodile (Mesosuchia) from the infratrappean beds of Vikarabad, Hyderabad district, Andhra Pradesh. *Curr. Sci.*, (Bangalore) **56**(10) : 532-534.
264. **Singh, S.D., Sahni, A., Gaffney, E., & Schleich, H.H.** 1998. Reptilia from the intertrappean beds of Bombay (India). 307-320. In : Schleich, H.H., Kastle, W. (Eds.) *Contribution to the herpetology of South-Asia (Nepal, India)*. Fuhlorott Museum, Wuppertal : I-VI, 1-320, ISBN 3-87429-404-8.
265. **Srinivasan, S.** 1996. Late Cretaceous eggshells from the Deccan volcano-sedimentary sequences of Central India. *Geol. Soc. India Mem.*, **37** : 321-336.
266. **Srivastava, A.K. & Bustard, H.R.** 1995. Phylogeny and zoogeography of the Gharial, *Gavialis gangeticus* (Gmelin) Reptilia Crocodilia). *J. nat. Hist. Soc.* (Bombay) **92**(2) 230-233.

267. **Stoliczka, F.** 1861-73. Cretaceous fauna of S. India. *Palaeont. Indica*, Ser. 1.pt. III, Vol. 1. Ser. V, Vol. II, Ser. VI, Vol. III, Ser. VIII, Vol. IV.
268. **Stoliczka, F.** 1869. Note on Pangshura tecta two other species of Chelonia, from newer Tertiary deposits of the Nerbadda valley. *Rec. Geol. Surv. India*, Calcutta., **2(2)** : 36-39, 2pls.
269. **Sukheserala, R.N.** 1947. A Tortoise (*Testudo leithii*) from the intertrappean of the Worli Hill, Bombay. *Abstr.Proc. Ind. Sci. Cong.*, 33rd session, **3** : 97.
270. **Sukheserala, R.N.** 1949. A fossil Tortoise (*Testudo lithii*) from the intertrappeans of the Worli Hill, Bombay. *Proc. 33rd Indian Sci. Congr.* 1949, Part **3** : 97 (Abstract).
271. **Suneja, I.J. & Sanjeev** 1983. On the *Gavialis* and another reptilian find from Nagrota Formation (Late Pliocene) of Jammu Siwaliks, India. *Publications Cent. Adv. Stud. Geol. Punjab Univ.*, **13** : 133-137.
272. **Swinton, W.E.** 1947 : New discoveries of *Titanosaurus indicus*. *Lyd. Ann. Mag. Nat. Hist.* (II) **14** : 112-123.
273. **Tandon, K.K.** 1971. On the discovery of Mammalian and Reptilian remains from the Middle Eocene Rocks of S.W. Kutch, India. *Curr. Sci.* Bangalore, **40(16)** : 436-437.
274. **Tarlo, L.B.** 1960. Fossil reptiles from the Panchet Beds of India. *Nature*, London. **183** (1959) : 912-913.
275. **Tewari, B.S. & Badam, G.L.** 1969. A new species of fossil turtle from the Upper Siwaliks of Pinjore, India. *Palaeontology*, **12(4)** : 555-558.
276. **Theobald, W.** 1860. On the Tertiary and Alluvial deposit of the central portion of the Nerbudda valley. *Mem. Geol. Surv. India*, **2** : 279-298.
277. **Theobald, W.** 1877. Description of a new Emydine from the Upper Tertiaries of Northern Punjab. *Rec. Geol. Surv. India*, **10(1)** : 43 -45.
278. **Tiwari, B.N., Mishra, P.S., Kumar, M. & Kulshrestha, S.K.** 1991. Microfaunal remains from the Upper Dharmasala Formation, Dharmasala, Kangra valley, H.P. *J. Palaeont. Soc. India*, **36** : 31-41.
279. **Tripathi, C.** 1962. *Rec. Geol. Surv. India*, **89** : 399. (not seen).
280. **Tripathi, C.** 1964. A note on the Geology and Vertebrate fossils of Sayamalai area, Tirunelveli district, Madras. *Rec. Geol. Surv. India*, **93(2)** (1964) : 257-262.
281. **Tripathi, C. & Puri, S.N.** 1962. On the remains of *Lystrosaurus* from the Panchets of the Raniganj Coalfield. *Rec. Geol. Surv. India*, Calcutta, **89(2)** : 407 -426, 4 pls.

282. **Tripathi, C. & Satsangi P.P.** 1963. *Lystrosaurus* fauna of the Panchet series of the Raniganj Coalfield. *Palaeont. Indica* (new series) **37** : 1-53.
283. **Trivedy, A.N.** 1966. A note on the finding of vertebrate fauna in the Surma series of Tripura and its bearing on the stratigraphy of the area. *Curr. Sci.*, **35** : 68-69.
284. **Vianey-Liaud, M., Jain, S.L. & Sahni, A.** 1987 (1988). Dinosaur eggshells (Saurischia) from the Late Cretaceous intertrappean and Lameta Formation (Deccan, India). *J. Vertebr. Palaeontol.*, **7**(4) : 408-424.
285. **Vijayarathi, G., & Sabale, A.B.** 1985. Miocene crocodylian (Tomistomidae) fossil from Southwestern Kutch, Gujarat. *Curr. Sci.*, **54**(20) : 1071-1073.
286. **Williams, E.** 1953. Fossils and the distribution of Chelyid turtle.1. *Hydraspis bithi* (Carter) in the Eocene of India is Pelomedusid. *Breviora*, **13** : 1-8, 3pls.
287. **Yadagiri, P.** 1986. Lower Jurassic lower vertebrates from Kota Formation, Pranhita-Godavari Valley, India. *J. Palaeont. Soc. India*, **31** : 89-96.
288. **Yadagiri, P.** 1988. A new sauropod *Kotasaurus yamanpalliesis* from Lower Jurassic Kota Formation of India. *Rec. Geol. Surv. India*, **116** (3-8) : 102-127, 3 pls., 9 figs.
289. **Yadagiri, P., Ayyasami, K. & Jagannatha Rao, B.R.** 1983. Cretaceous dinosaurs from southern India and their palaeogeographic significance. *Rec. Geol. Surv. India*, **112** (2) : 51-57.

Addendum

1. **Chakravorty, S.K. & Ghosh, S.C.** 1973. Recent discovery of Lower Triassic vertebrate and invertebrate fossils from the Panchet Formation of North Karanpura Coalfield of Bihar. Research Note; *Indian Minerals*, **27**(3) : 91-93, 4 pls.

Table 2 : Fossil reptilian taxa recorded from different geological horizons of various parts of India.

Taxa	Geological horizon	Locality	Ref. No.
<i>Abelisaurus</i>	Late Cretaceous	Lameta Formation, Central India	200
Alligatorinae	Lower Pliocene	Rangapur, Andhra Pradesh	216
Alligatorinae	Upper Cretaceous	Rangapur, Andhra Pradesh	216
<i>Alwakeria maleriensis</i>	Late Triassic	Maleri Formation, Pranhita Godavari Basin	59, 20
<i>Anikistriodon</i> nom. van.	Lower Triassic	India	142
<i>Anikistriodon indicum</i>	Lower Triassic	Deoli, Assansol	104
<i>Antarctosaurus</i> <i>septentrionalis</i>	Late Cretaceous	Jabalpur	183
Archosauria	Lower Jurassic	Kota Formation	114
<i>Barapasaurus tagorei</i>	Lower Jurassic	Kota Formation	123, 124, 20
<i>Batagur</i> sp.	Caenozoic (Tertiary)	Siwalik, Narbada	163
<i>Batagur bakeri</i>	Caenozoic (Tertiary)	Siwalik, Narbada	163
<i>Batagur cautleyi</i>	Caenozoic (Tertiary)	Kashmir	149
<i>Batagur</i> cf. <i>dhongoka</i>	Caenozoic (Tertiary)	Narbada Valley	267
<i>Batagur durandi</i>	Caenozoic (Tertiary)	Siwalik, Narbada	163
<i>Batagur falconari</i>	Caenozoic (Tertiary)	Siwalik, Narbada	163
<i>Belodon</i> sp. nom. van.	Upper Triassic	South Rewah (Tiki)	151
<i>Belodon</i> sp. nom. van.	Upper Triassic	Maleri and Denwa Group - 32 km. N.W. of	65

Taxa	Geological horizon	Locality	Ref. No.
		Seroncha S. Rewa (Tiki)	
<i>Bellia</i> sp.	Tertiary	Northern Punjab	277
<i>Bharutagama</i>	Lower Jurassic	Kota Formation, Pranhita Godavari Basin	80
<i>Brachysuchus maleriensis</i>	Triassic	Maleri Formation, Tiki Formation, Central India	128
<i>Brachysuchus maleriensis</i> cf. <i>Typhothorax</i>	Upper Triassic	Maleri Formation	94
<i>Brachysuchus maleriensis</i>	Triassic	Deoli, Assansol	68
<i>Calotes</i>	Pliocene	Siwalik, Punjab	205
<i>Campylognathus</i>	Lower Jurassic	Kota Formation	108
<i>Campylognathus indicus</i>	Lower Jurassic	Kota Formation	20
Captorhinidae	Late Permian	Kota Formation, Pranhita Godavari Basin	20
<i>Carnotaurus</i>	Late Triassic	Lameta Formation	200
<i>Cautleyaannuliger</i>	Caenozoic	Punjab	150
Reptilia (Catalogue)	-	-	166
<i>Chasmatosaurus (Thrinaxodon)*</i>	Lower Triassic	Panchet Formation	232, 254
Chelonian	Cretaceous	Uttatturs	251
Chelonian	Upper Cretaceous	Intertrappean beds, Pisdura	170
Chelonian	Cretaceous	Maharastra Intertrappean beds	194, 264

Taxa	Geological horizon	Locality	Ref. No.
Chiniquodontidae	Triassic	Madhya Pradesh	75
<i>Chitra</i> sp.	Caenozoic	Punjab	150
<i>Chitra indica</i>	Caenozoic	Punjab	150
<i>Chitra indica</i>	Quaternary	Barrakpore, W. B.	260
<i>Cistecephalus</i>	Late Permian	Kundaram Formation, Pranhita Godavari Basin	220, 131
<i>Cistecephalus microrhinus</i>	Late Permian	Kundaram Formation, Pranhita Godavari Basin	228
<i>Clemys</i> sp.	Caenozoic	Siwalik, Narbada	163
<i>Clemys hydaspiea</i>	Caenozoic	Punjab	150
<i>Clemys punjabiensis</i>	Caenozoic	Punjab	150
<i>Clemys sivalensis</i>	Caenozoic	Punjab	150
<i>Clemys theobaldi</i>	Caenozoic	Punjab	150
<i>Clemys trigura</i>	Caenozoic	Punjab	150
<i>Clemys watsoni</i>	Pliocene	India	156
Coprolites	Upper Triassic	Maleri Formation India	113
<i>Crocodylus</i> sp.	Middle Eocene	Bilaspur, Himachal Pradesh	243
<i>Crocodylus</i> sp.	Lower Miocene	Kachchh, Gujarat	285
<i>Crocodylus</i> sp.	Miocene	Kachchh, Gujarat	240
<i>Crocodylus</i> sp.	Quaternary	Karnool cave	155
<i>Crocodylus</i> sp.	Caenozoic	Siwalik	154
<i>Crocodylus</i> sp.	Pliocene	Siwalik	82
<i>Crocodylus</i> sp.	-	India	187
<i>Crocodylus biporcatus</i>	Tertiary	Siwalik Hills	39

Taxa	Geological horizon	Locality	Ref. No.
<i>Crocodylus biporcatus</i> var. <i>cuvieri</i>	Quaternary	Siwalik Hills	36
<i>Crocodylus bombifrons</i>	Pliocene	Siwalik	82
<i>Crocodylus gangeticus</i>	Pliocene	Siwalik	82, 84
<i>Crocodylus kutchensis</i>	Middle Eocene	S.W.Kachchh (2 km. North of Haradi vill.)	273
<i>Crocodylus leptodus</i>	Pliocene	Siwalik	82
<i>Crocodylus longirostris</i>	Quaternary	Siwalik Hills	37
<i>Crocodylus palaeindicus</i>	Pliocene	Siwalik	84, 154
<i>Crocodylus palaeindicus</i>	Pleistocene	Central Narbada Valley, M.P.	7
<i>Crocodylus palustris</i>	Pliocene	Kashmir & Jammu	271
<i>Crocodylus palustris</i>	Miocene	Bokabil stage, Teliamura, Tripura	283
<i>Crocodylus porosus</i>	Quaternary	Siwalik Hills	36
<i>Crocodylus testudines</i>	Pleistocene	Mogra valley, Central Godavari Basin	8
<i>Crocodylus sivalensis</i>	Pliocene	Siwalik	154
<i>Dicynodon</i>	Triassic	Yerapalli Formation	65
<i>Dicynodon</i>	Triassic	Panchet Formation	104
<i>Dicynodontidae</i>	Late Permian	Kundaram Formation	20
<i>Dicynodon orientalis</i>	Triassic	Panchet Formation	104
<i>Dicynodon orientalis</i>	Cretaceous	India	141, 142
Dinosauria	Maestrichtian	Anjar Intertrappean beds, Gujarat	9
Dinosauria	Palaeocene **	Gujarat (Kheda district)	190
Dinosauria	Palaeocene **	Gujarat	173
Dinosauria	Palaeocene **	Anjar area (Kachchha)	92

Taxa	Geological horizon	Locality	Ref. No.
Dinosauria	Tertiary **	India	172
Dinosauria	Tertiary **	India	241
Dinosauria	Mesozoic	India	117
Dinosauria	Mesozoic	India	176
Dinosauria	Mesozoic	India	239
Dinosauria	Upper Cretaceous	Kachchha, Gujarat	1
Dinosauria	Upper Cretaceous	Gujarat	194
Dinosauria	Upper Cretaceous	Gujarat	177
Dinosauria	Upper Cretaceous	Panchmahal district, Gujarat	191
Dinosauria	Upper Cretaceous	Gujarat (Kheda district)	192
Dinosauria	Upper Cretaceous	Gujarat	188
Dinosauria	Upper Cretaceous	Gujarat	195
Dinosauria	Upper Cretaceous	Lameta Formation, Central India	32
Dinosauria	Upper Cretaceous	Pisdura, Chandrapur, Maharashtra	126
Dinosauria	Upper Cretaceous	Chandrapur district, Maharashtra	193
Dinosauria	Upper Cretaceous	Vikrabad, Hyderabad, Andhra Pradesh	263
Dinosauria	Upper Cretaceous	Deccan India	284
Dinosauria	Cretaceous	India	206
Dinosauria	Cretaceous	Ariyalur, Tamil Nadu	132
Dinosauria	Cretaceous	Kheda district, Gujarat	189
Dinosauria	Cretaceous	India	210
Dinosauria	Cretaceous	Lameta Formation,	246

Taxa	Geological horizon	Locality	Ref. No.
Dinosauria	Cretaceous	Lameta Formation, Jabalpur	246
Dinosauria	Cretaceous	Peninsular India	242
Dinosauria	Cretaceous	Deccan volcano Sedimentary, peninsular India	249
Dinosauria	Cretaceous	Deccan volcano Sedimentary, peninsular India	250
Dinosauria	Cretaceous	Volcanic Intertrappean beds, Madhya Pradesh, Maharashtra	265
Dinosauria	Cretaceous	Southern India	289
Dinosauria	Cretaceous	Lameta Formation, Jabalpur	179
Dinosauria	Cretaceous	Trichinopoly district, Tamil Nadu	194
Dinosauria	Cretaceous	India	60
Dinosauria	Jurassic	India	52
Dinosauria	Jurassic	Kachchha, Gujarat	257
Dinosauria	Jurassic	Kota Formation	127
Dinosauria	Middle Jurassic	Jaisalmer, Rajasthan	174
Dinosauria	Lower Jurassic	Kota Formation, India	114
Dinosauria	Lower Jurassic	Kota Formation, India	122
Dinosauria	Triassic	Madhya Pradesh	130
<i>Dinosauria</i>	Upper Cretaceous	Kheda district, Gujarat	175
<i>Endothiodon</i>	Permian	Kundaram Formation, Pranhita Godavari Basin	220, 131
Endothiodon	Late Permian	Kundaram Formation,	229

Taxa	Geological horizon	Locality	Ref. No.
mahalanobisi		Pranhita Godavari Basin, Andhra Pradesh	
<i>Endothiodon uniseries</i>	Late Permian	Kundaram Formation, Pranhita Godavari Basin, Andhra Pradesh	229
<i>Endothiodont dicynodont</i>	Late Permian	Kundaram Formation, Pranhita Godavari Basin, Andhra Pradesh	227
<i>Epicampadon</i> sp. nom. van	Triassic	Panchet beds Deoli, near Assansol	68
<i>Epicampadon indicum</i> nom. van.	Lower Triassic	Deoli, Assansol	104
<i>Emyda</i> sp.	Caenozoic	Siwalik, Narbada, Punjab	163
<i>Emyda</i> c.f. <i>granosa</i>	Caenozoic	Siwalik, Narbada	163
<i>Emyda lineata</i>	Caenozoic	Punjab	150
<i>Emyda palaeindicus</i>	Caenozoic	Punjab	150
<i>Emyda sivalensis</i>	Caenozoic	Punjab	150
<i>Emyda vittata</i>	Caenozoic	Punjab	150
<i>Emydops plalyiceps</i>	Late Permian	Kundaram Formation, Pranhita Godavari Basin, Andhra Pradesh	228
<i>Emys</i> sp.	Pliocene	Siwalik	82
<i>Emys</i> sp.	Tertiary	Siwalik	39
<i>Emys tecta</i>	Pliocene	Siwalik	82
<i>Emyo namadicus</i>	Tertiary	Narbada Valley	276
Erythrosuchidae	Middle Triassic	Yerrapalli Formation	20
<i>Exaeretodon statisticae</i>	Upper Triassic	Maleri Formation, Pranhita Godavari	20, 51

Taxa	Geological horizon	Locality	Ref. No.
Faunal assemblage (unspecified)	Caenozoic	Basin, Andhra Pradesh Upper Siwalik	89
Faunal assemblage (unspecified)	Quaternary	West Bengal	73
Faunal assemblage (unspecified)	Quaternary	India and adjacent country	211
Faunal assemblage (unspecified)	Middle Miocene	Kashmir and Jammu	88
Faunal assemblage (unspecified)	Lower Miocene	Indian subcontinent, Subathu Formation	245
Faunal assemblage (unspecified)	Palaeocene	Deccan, Gitti Khadan	90
Faunal assemblage (unspecified)	Palaeocene	Subathu Formation	244
Faunal assemblage (unspecified)	Cretaceous	Rangareddi district, Andhra Pradesh	209
Faunal assemblage (unspecified)	Cretaceous	South India	267
Faunal assemblage (unspecified)	Upper Cretaceous	Andhra Pradesh	208
Faunal assemblage (unspecified)	Triassic	Central India	118
Faunal assemblage (unspecified)	Late Triassic	Pranhita Godavari Valley	136
Faunal assemblage (unspecified)	Permian	Pranhita Godavari Valley	223
<i>Gavialis</i> sp.	Caenozoic	Siwalik	154
<i>Gavialis</i> sp.	Pliocene	Kashmir, Jammu	271
<i>Gavialis</i> sp.	Pliocene	Bugti Hill, Punjab	207

Taxa	Geological horizon	Locality	Ref. No.
<i>Gavialis breviceps</i>	Pliocene	Bugti Hill, Punjab	207
<i>Gavialis breviceps</i>	Lower Miocene	Bugti Hill	139
<i>Gavialis browni</i>	Pliocene	Lower-Middle Siwalik, 1 mile south of Nathat, N. of Salt Range	196
<i>Gavialis browni</i>	Lower Pliocene	Lower-Middle Siwalik	139
<i>Gavialis curvirostris</i>	Caenozoic	Siwalik	154
<i>Gavialis curvirostris</i> var. <i>gagensis</i>	Pliocene	Bugti Hill, Punjab	207
<i>Gavialis curvirostris</i> var. <i>gagensis</i>	Lower Miocene	Bugti Hill, Punjab	139
<i>Gavialis gangeticus</i>	Quaternary	West Bengal	260
<i>Gavialis gangeticus</i>	Caenozoic	Siwalik	154
<i>Gavialis gangeticus</i>	Recent	Siwalik	139
<i>Gavialis gangeticus</i>	Caenozoic	Siwalik	154
<i>Gavialis hysudricus</i>	Pleistocene	Upper Siwalik (Dhok Pathan)	139
<i>Gavialis lewisi</i>	Miocene - Pleistocene	Middle Siwalik, N of Salt Range	139
<i>Gavialis leptodus</i>	Pleistocene	Upper Siwalik	139
<i>Gavialis pachyrhynchus</i>	Caenozoic	Siwalik	154
<i>Gavialis pachyrhynchus</i>	Upper Miocene	Lower Siwalik	139
Gekkonidae	Late Cretaceous	Deccan Intratrappan beds, Kachchha, Gujarat	10
<i>Geoclemys sivalensis</i>	Caenozoic	Upper Siwalik, Pinjore	275
<i>Geoemyda</i> sp.	Caenozoic	Punjab	150
<i>Geoemyda pilgrimii</i>	Miocene	Siwalik Hills, Himachal Pradesh	212

Taxa	Geological horizon	Locality	Ref. No.
<i>Gharialis</i> sp.	Miocene	Teliamura, Tripura	283
<i>Gharialis gangeticus</i>	Miocene	Teliamura, Tripura	283
<i>Gharialis</i> cf. <i>gangeticus</i>	Miocene	Narang barri in Rammura Range, Tripura	283
<i>Godavarisaurus</i>	Lower Jurassic	Kota Formation	79
<i>Gondwanasaurus bijoriensis</i>	Late Permian	Bijori Formation, Satpura Basin	231
<i>Hemichelys warthi</i>	Eocene	Salt Range	158
<i>Hydraspis</i> sp.	Cretaceous	Nagpur	169
<i>Hydraspis bithii</i>	Cretaceous	Nagpur	169
<i>Hydraspis bithii</i>	Cretaceous	Bombay	93
<i>Hydraspis bithii</i>	Lower Tertiary	Worly Hills, Bombay	198
<i>Hydraspis bithii</i>	Eocene	India	286
<i>Hyperodapedon</i> sp.	Pre-Tertiary	Maleri and Tiki Formation, Rewa, Madhya Pradesh	151
<i>Hyperodapedon</i> sp.	Upper Triassic	Maleri and Tiki Formation, Rewa, Madhya Pradesh	145, 151
<i>Hyperodapedon</i> sp.	Triassic	Central India Maleri	105
<i>Hyperodapedon huxleyi</i>	Pre-Tertiary	Maleri and Tiki Formation, Rewa, Madhya Pradesh	151
<i>Hyperodapedon huxleyi</i>	Triassic	Maleri Formation, Madhya Pradesh	145, 151
<i>Hyperodapedon huxleyi</i>	Upper Triassic	Tiki Formation	65
<i>Indochelys</i>	Lower Jurassic	Kota Formation	76

Taxa	Geological horizon	Locality	Ref. No.
<i>Icthyosaurus</i>	Cretaceous	Trichinapally	217
<i>Icthyosaurus</i>	Upper Cretaceous	India	142
<i>Icthyosaurus indicus</i>	Upper Cretaceous	India	142
Indosaurus	Late Cretaceous	Lameta Formation, Central India	200
<i>Indosuchus</i>	Late Cretaceous	Lameta Formation, Central India	200
Kannemeyeriidae	Late- Middle Triassic	Bhimaram Formation, Pranhita Godavari Basin	20
Kannemeyeriidae	Late Triassic	Maleri Formation, Pranhita Godavari Basin	20
Kannemeyeriidae	Middle Triassic	Denwa Formation, Satpura Basin	20
Kayentachelidae	Early Jurassic	Upper Kota Formation, Pranhita Godavari Basin	20
<i>Kingoria</i>	Late Permian	Kundaram Formation, Pranhita Godavari Basin	229
<i>Kotasaurus yamanpalliensis</i>	Lower Jurassic	Kota Formation, India	20, 288
<i>Laevisuchus</i>	Late Cretaceous	Lameta Formation, Central India	200
<i>Lametasaurus indicus</i>	Cenomanian	Jabalpur	181
<i>Laptosaurus</i> sp.	Cretaceous	Jabalpur, Sibondi, Pisdura	183
<i>Leptorhynchus crassidens</i>	Tertiary	Siwalik Hills	39

Taxa	Geological horizon	Locality	Ref. No.
<i>Leptorhynchus gangeticus</i>	Tertiary	Siwalik Hills	39
<i>Lissemys punctata</i>	Pleistocene	Shyamalai area	280
<i>Lystrosaurus</i>	Lower Triassic	Panchet Formation 282,	231, Add. 1
<i>Lystrosaurus maccaigi</i> (<i>L. murrayi</i>)	Lower Triassic	Panchet Formation, Raniganj	20, 232
<i>Lystrosaurus breviceps</i> (<i>L. murrayi</i>)	Lower Triassic	Panchet Formation, Raniganj	20, 274
<i>Lystrosaurus rajurkari</i> (<i>L. murrayi</i>)	Lower Triassic	Panchet Formation, Raniganj	20, 281
<i>Lystrosaurus orientalis</i>	Upper Triassic	Panchet Formation	62,65, 67
<i>Malerisaurus robinsonae</i>	Late Triassic	Maleri Formation, Pranhita Godavari Basin	20, 48
<i>Massodapedon kuttyi</i>	Middle Triassic	Yerrapalli Formation, Pranhita Godavari Basin	20, 21
<i>Massospondylus</i> sp.	Late Triassic	Dharmaram Formation, Pranhita Godavari Basin	169, 161
<i>Massospondylus rawsi</i>	Cretaceous	Nagpur	169
<i>Megalochelis</i> sp.	Pliocene	Siwalik	82
<i>Megalochelis sivalensis</i>	Pliocene	Siwalik	81,82, 83,84
<i>Megalosaurus</i> sp.	Cretaceous	Trichinapally	217
<i>Megalosaurus</i> sp.	Cretaceous	Cullanoad, c. 6 mile away from Ariyalur, Tamil Nadu	28

Taxa	Geological horizon	Locality	Ref. No.
<i>Megalosaurus</i> sp.	Cretaceous	India	141
<i>Megalosaurus</i> sp.	Upper Cretaceous	India	142
Reptile (unspecified)	Mesozoic	Gondwana, India	64
Marine Reptile (unspecified)	Mesozoic	Gondwana, India	171
Microfossil remains	Miocene, Oligocene	Upper Dharmasala, Kangra Valley, Himachal Pradesh	278
<i>Naia tripadians</i>	Quaternary	Karnool Caves	155
<i>Nicrosaurus</i> sp.	Late Triassic	Dharmaram Formation, Pranhita Godavari Basin	20
<i>Nicoria tricarinata sivalensis</i>	-	-	165
Ornithoid Reptile (Ornithischia)	Late Cretaceous	Deccan Intertrappean beds near Anjar, Kachchha, Gujarat	11
<i>Orthoginosaurus matleyi</i>	Cretaceous	Lameta beds, Jabalpur	70
<i>Oudenodon</i>	Late Permian	Kundaram Formation, Pranhita Godavari Basin	220 131 229
<i>Paikasisaurus</i> sp. indet	Lower Jurassic	Kota Formation, Pranhita Godavari Basin	287
<i>Pamelaria dolichotrachela</i>	Middle Triassic	Yerrapalli Formation, Pranhita Godavari Basin	258
<i>Pangshura</i> sp	Caenozoic	Punjab	150
<i>Pangshura</i> sp.	Tertiary	Narbada Valley	268

Taxa	Geological horizon	Locality	Ref. No.
<i>Pangshura flaviventris</i>	Caenozoic	Siwalik, Narbada	163
<i>Pangshura flaviventris</i>	Caenozoic	Punjab	150
<i>Pangshura tecta</i>	Tertiary	Narbada Valley	268
<i>Paradapedon</i> sp.	Triassic	India	96
<i>Paradapedon huxleyi</i>	Upper Triassic	Tiki Formation Maleri Formation	94
<i>Paradapedon huxleyi</i>	Triassic	Maleri Formation,	20,128
<i>Paradapedon indicus</i>	Upper Triassic	Maleri Formation	94
<i>Parasuchus</i> sp.	Upper Triassic	Tiki Formation, Maleri Formation	145, 151
<i>Parasuchus</i> sp.	Upper Triassic	Maleri Formation	46,141
<i>Parasuchus</i> sp.	Triassic	Maleri Formation	65
<i>Parasuchus hislopi</i>	Upper Triassic	Maleri Formation, Madhya Pradesh	20, 151
<i>Parasuchus hislopi</i>	Upper Triassic	Tiki Formation, Madhya Pradesh	151
<i>Plateosaurus</i> sp.	Late Triassic- Early Jurassic	Dharmaram Formation, Pranhita Godavari Basin	20, 202, 203
<i>Plesiosaurus</i> sp.	Upper Cretaceous	India	142
<i>Plesiosaurus</i> sp.	Jurassic	Gujarat	26
<i>Plesiosaurus</i> sp.	-	India	140
<i>Plesiosaurus indicus</i>	Upper Cretaceous	India	142, 141
<i>Plesiosaurus indicus</i>	Cretaceous	Kachchha, Gujarat	162
<i>Podoenemis indica</i>	Eocene	Salt Range	158
<i>Pristerodon</i>	Late Permian	Kundaram Formation, Pranhita Godavari Basin	220, 131

Taxa	Geological horizon	Locality	Ref. No.
<i>Pristerodon mackayi</i>	Late Permian	Kundaram Formation, Pranhita Godavari Basin	228
<i>Proterosuchus</i> (<i>Chasmatosaurus</i>) <i>indicus</i>	Early Triassic	Panchet formation, Damodar Basin	20, 95, 100
Pterosauria	Cretaceous	Sirolkhal, eastern part of Kachchha	77
<i>Pteryas</i> sp.	Quaternary	Karnool Cave	155
<i>Pteryas mucosus</i>	Quaternary	Karnool Cave	155
<i>Ptychosiagam</i> nom. van.	Lower Triassic	Bengal, India	167
<i>Ptychosiagam orientalis</i> nom. van.	Lower Triassic	Panchet	62,65 67
<i>Ptychosiagam orientalis</i> nom. van.	Lower Triassic	India	159
<i>Ptychosiagam huxleyi</i> nom. van.	Lower Triassic	India	167
<i>Python molurus</i>	Caenozoic	Siwalik, Narbada Range	146
<i>Python molurus</i>	Pliocene	Siwalik	154
Rauisuchidae	Middle Triassic	Yerrapalli Formation, Pranhita Godavari Basin	20
<i>Rechnisaurus</i> <i>cristarhynchus</i>	Triassic	Yerrapalli Formation, Pranhita Godavari Basin, Andhra Pradesh	15,16, 20
<i>Ramphorhynchus</i> sp.	Lower Jurassic	Kota Formation, Maharashtra	218
<i>Ramphosuchus</i> sp.	Caenozoic	Siwalik	154

Taxa	Geological horizon	Locality	Ref. No.
<i>Ramphosuchus</i> sp.	Pliocene	Siwalik	154
<i>Ramphosuchus crassidens</i>	Caenozoic	Siwalik	154
<i>Ramphosuchus crassidens</i>	Pliocene	Siwalik	154
<i>Rebbanasaurus</i>	Lower Jurassic	Kota Formation	79
<i>Rhinesuchus wadiai</i>	Early Triassic	Damodar Group, Son Mahanadi Basin	74, 279
<i>Rhynchosauridae</i>	Triassic	Andhra Pradesh, Madhya Pradesh	74
Reptilian vertebra	Cretaceous	South India	219
Reptilian vertebra	Late Triassic	Pranhita Godavari Basin	136
Records, reviews (Palaeoecology, skeletal morphology)	Pleistocene	India	252
<i>Rutidon</i>	Late Triassic	Maleri Formation, Pranhita Godavari Basin	136
Sauropoda	Upper Cretaceous	Central India, Lameta Formation	33
Sauropoda	Upper Cretaceous	India	247
Sauropoda	Cretaceous	Jhalod, Panchmahal district, Gujarat	234
Sauropodomorpha	Cretaceous	Gujarat	253
Saurian (not Dicyodont)	Lower Triassic	Panchet rock, Raniganj, Bengal	104
Saurian scapulae	Lower Triassic	Panchet rock, Raniganj, Bengal	104

Taxa	Geological horizon	Locality	Ref. No.
Serpents	Cretaceous	Andhra Pradesh	214
<i>Shweboemys</i>	Cretaceous	Tamil Nadu	3
Spenodontidae	Lower Jurassic	Pranhita Godavari Valley	287
Sphenosuchidae	Late Triassic	Dharmaram Formation, Pranhita Godavari Basin	20, 202, 203
Stagonolepidae	Late Triassic	Maleri Formation, Pranhita Godavari Basin	20
Stegocephalian	Triassic	Panchet bed, Deoli near Assansol	70
Reptile assemblage (Systematic accounts)	Lower Miocene	Western India, Kachchha	248
<i>Tetrasaurus(?) bengalensis</i> nom. van.	Triassic	Deoli, Bengal	69
Testudines	Jurassic	Maharashtra	76
<i>Teleosaurus</i>	Lower Jurassic	Kota Formation	20
<i>Testudo (Colossochelys)</i> sp.	Caenozoic	Punjab	150
<i>Testudo (Colossochelys)</i> sp.	Pliocene	Siwalik	164
<i>Testudo (Colossochelys) atlas</i>	Caenozoic	Punjab	150
<i>Testudo (Colossochelys) atlas</i>	Pliocene	Siwalik	81, 82, 83, 84
<i>Testudo beithi</i>	Cretaceous	Bombay	34
<i>Testudo beithi</i>	Intratrappean	Worli Hill, Bombay	270
<i>Testudo cautleyi</i>	Pliocene	Siwalik	164

Taxa	Geological horizon	Locality	Ref. No.
<i>Testudo punjabensis</i>	Pliocene	Siwalik	164
<i>Thaumatosauros</i>	Cretaceous	Kachchha	162
<i>Thaumatosauros indica</i>	Cretaceous	Kachchha	162
<i>Thecodontosaurus</i> sp.	Upper Triassic	Tiki Formation, Rewa	65
Theropod dinosaurs	Cretaceous	Lameta beds, Jabalpur	107
Theropod dinosaurs	Upper Triassic	Andhra Pradesh	53
<i>Thrinaxodon bengalensis</i>	Early Triassic	Panchet Formation, Damodar Basin	20, 256
<i>Tikisuchus romeri</i>	Upper Triassic	Tiki Formation, Son Mahanadi Basin	20, 58
<i>Titanosaurus</i> sp.	Cretaceous	Jabalpur	180
<i>Titanosaurus</i> sp.	Cretaceous	Central India	120
<i>Titanosaurus</i> sp.	Cretaceous	India	141, 160
<i>Titanosaurus blanfordi</i>	Cretaceous	Jabalpur, Sibondi Pisdura, India	180
<i>Titanosaurus indicus</i>	Cretaceous	Pisdura	141
<i>Titanosaurus coberti</i>	Late Cretaceous	Lameta Formation, Dongargaon	120
<i>Titanosaurus coberti</i>	Late Cretaceous	Lameta beds, Jabalpur	107, 178
<i>Titanosaurus coberti</i>	Pliocene **	India	272
<i>Titanosaurus rahiolienensis</i>	Upper Cretaceous	Gujarat	177
Trionychidae	Lower Palaeocene	Gujarat	262
<i>Trionix</i> sp.	Caenozoic	Punjab, Siwalik, Narbada	150, 163
<i>Trionix</i> sp.	Pleistocene	Central Narbada Valley, M.P.	7
<i>Trionix</i> sp.	Tertiary	Siwalik Hills	39

Taxa	Geological horizon	Locality	Ref. No.
<i>Trionix</i> sp.	Middle Eocene	Bilaspur area, Himachal Pradesh	243
<i>Trionix gangeticus</i>	Caenozoic	Punjab	150
<i>Trionix gangeticus</i>	Tertiary	Narbada Valley	268
Trirachodontid	Middle Triassic	Yerrapalli Formation, Pranhita Godavari Basin	21
Turtle	Tertiary and Jurassic	Narbada Valley	86
Turtle (Pelomedusid)	Upper Cretaceous	Pisdura sediment, Central India	109
Turtle (Pelomedusid)	Upper Cretaceous	Dongargaon, Central India	115
Turtle and Tortoise	Pleistocene	India	137
Typosuchus	Upper Triassic	Dharmaram Formation, Pranhita Godavari Basin	136
<i>Uromastix vimali</i>	Upper Pliocene	Haryana	215
<i>Varanus</i> sp.	Caenozoic	Siwalik	154
<i>Varanus</i> sp.	Quaternary	Karnool Cave	155
<i>Varanus dracana</i>	Quaternary	Karnool Cave	155
<i>Varanus dracana</i>	Pleistocene	Karnool district, Andhra Pradesh	213
<i>Varanus sivalensis</i>	Caenozoic	Siwalik	154
<i>Varanus sivalensis</i> cf. <i>suchasaurus</i>	Pliocene	Siwalik	154
Reptilian vertebrates	Pliocene	Jammu, Udhampur, Ramnag area, J.& K. State	255

Taxa	Geological horizon	Locality	Ref. No.
<i>Wadiasaurus indicus</i>	Middle Triassic	Yerrapalli Formation, Pranhita Godavari Basin	13, 20, 21
<i>Xenotarsosaurus</i>	Late Cretaceous	Lameta Formation, Central India	200
<i>Xinjiangchelys uttaturensis</i>	Cretaceous	Tamil Nadu	66
<i>Yerasuchus deccanensis</i>	Middle Triassic	Yerrapalli Formation, Pranhita Godavari Basin, Bhimaram vill., Adilabad dist., A.P.	259

- * The current valid names of the taxa in column 1 are given in parentheses below the nomenclature available in original publication.
- ** Doubt exists about the Geological Horizon.