

FAUNA OF CONSERVATION AREAS : 2

**FAUNA OF
CORBETT NATIONAL PARK**



B. S. LAMBA

**ZOOLOGICAL SURVEY OF INDIA
1987**

FAUNA OF CONSERVATION AREAS

ZOOLOGICAL SURVEY OF INDIA

FAUNA OF CORBETT NATIONAL PARK (MAMMALS, BIRDS & REPTILES)

By

B. S. LAMBA

Zoological Survey of India



Edited by the Director, Zoological Survey of India

1987

© Copyright 1987, Government of India

Published : December, 1987

PRICE : Inland : Rs. 150·00

Foreign : £ 20·00

\$ 30·00

PRINTED IN INDIA BY THE BANI PRESS, 16 HEMENDRA SEN
STREET, CALCUTTA-700 006 ; PUBLISHED BY THE DIRECTOR,
ZOOLOGICAL SURVEY OF INDIA, CALCUTTA-700 072.

PREFACE

India's richness in biological diversity is manifest in its magnificent wildlife. Unfortunately this unique living resource has suffered heavily, over the past hundred years or so, on account of socio-economic pressures in the wake of human population explosion. For the sake of developmental activity unimaginative changes were made in established land use practises which resulted in large scale destruction of wild life habitat. This habitat destruction coupled with ruthless exploitation has played havoc with wild life population throughout the country.

Since the turn of century at least 30 species of mammals and 14 species of birds of the Indian subcontinent have severely been threatened with extinction. One species of mammals, *i.e.*, Cheetah, *Acinonyx jubatus* and two species of birds, *viz.*, Pink headed Duck, *Rhodonessa caryophyllacea* and Mountain Quail, *Ophrysia superciliosa* have already become extinct. Many species *e.g.* Tiger, Leopard (Panther) Lion, Sloth Bear, Chinkara, etc. have become extinct locally where formally these were common (I.B.W.L., Expert Committee Report, 1970).

Most of the wildlife in India is now concentrated in conservation areas only. The conservation areas comprising of 53 National Parks (including 15 Tiger Reserves) and 247 Wildlife Sanctuaries are spread over the length and breadth of India. Some of these areas are under consideration for being declared as Biosphere Reserves.

The Indian Board for Wildlife had in their XV meeting held on 1st October 1982 under the Chairpersonship of the then Prime Minister, Late Mrs. Indira Gandhi, noted with concern the paucity of information on wildlife of conservation areas in the country. The Board desired that Zoological Survey of India should also take up the faunal exploration of conservation areas (Tiger Reserves, National Parks and Sanctuaries, etc.) with special reference to wild life.

Consequently Zoological Survey of India included the "Qualitative Faunal Assessment of Conservation Areas" as a regular programme in their Seventh Five Year Plan.

The present attempt is the first step in that direction. An attempt has been made to list the wild life found in the Corbett National Park with coloured illustrations of prominent forms. It is fully realised that there are a number of shortcomings and lacunae even in the final format, but this is the best that could be achieved with the present manpower and resources. We look forward to better performance with the future augmentation of resources.

B. S. LAMBA

ACKNOWLEDGEMENTS

A major portion of the data collated here was collected through a project "IMPACT ASSESSMENT OF BIO-ECOLOGICAL CHANGES IN THE FAUNAL PATTERS (SELECTED GROUPS) BROUGHT ABOUT BY THE PARTIAL SUBMERSION OF CORBETT NATIONAL PARK, AS A RESULT OF RAMGANGA MULTIPLE HYDEL PROJECT DAM" funded by the Department of Environment, Forests and Wildlife on the recommendations of the National Man and Biosphere Committee. Survey provided the scientific and technical manpower, field equipment, laboratory and library facilities and secretarial assistance. Dr. B. S. Lamba, Jt. Director, Dr. P. C. Tak and Dr. Girish Kumar, Research Fellows, were primarily responsible for the collection and collation of the data presented. The Chief Wildlife Warden, Uttar Pradesh and the Park Director, Corbett National Park extended active co-operation, help and assistance for undertaking studies in the area. The park staff at all levels was most helpful.

Patronage, guidance, help and assistance received from all the above said agencies, organisations, officials and individuals for conducting studies culminating in this report is gratefully acknowledged.

FAUNA OF CORBETT NATIONAL PARK

CONTENTS

	PAGE
PREFACE ...	iii
ACKNOWLEDGEMENTS ...	v
THE PARK :	
(i) LOCATION ...	1
(ii) TOPOGRAPHY ...	1
(iii) CLIMATE ...	2
(iv) SOIL GEOLOGY ...	4
(v) VEGETATION ...	5
FAUNA :	
Salient Features	
(A) MAMMALS ...	6
(B) BIRDS ...	7
(C) REPTILES ...	7
APPENDIX I —MAMMALS ...	8
APPENDIX II —BIRDS ...	19
APPENDIX III—REPTILES ...	82
Snakes ...	82
Lizards ...	84
Crocodiles ...	85
Tortoises ...	86
PLATES	

THE PARK

(i) Location :

The Corbett National Park, the first ever National Park created in U. P. was demarcated under the "United Provinces National Parks Act 1934". It comprised an area 256 sq km in the foothills of outer Himalayas in the famous Patli Dun and the hill forests to the south of it. It was named "Haily National Park", after Sir Malcolm Haily, the then Governor of U. P. After independence, the Park was redesignated as "Ramganga National Park", after the tributary of river Ganga flowing through the Park. Later, to honour the memory of Jim Corbett, the celebrated naturalist and hunter of 'Maneaters' in Kumaon, the Park was renamed "Corbett National Park". In the meanwhile the Park had also expanded in size. Today the Corbett National Park covers an area of about 520 sq km between 29°13'-29°35'N Lat. and 78°33'-78°46'E Long.

(ii) Topography :

The natural forest of the Park is confined to the Bhabar tract of Siwalik Formation at altitudes of 400-1200 m, with varied topography of many temporary marshy depressions, ravines and plateau land (Map 1). The river Ram Ganga (Photograph 1) enters the Park from the north-east near Gairal Forest Rest House, runs a south-westerly course upto Sarapduli Forest Rest House, bends to flow in north-west direction till it crosses Dhikala Forest Rest House and changes course to south-west again to emerge out of the Park at Kalagarh. The river bed is generally sandy, pebbly, rocky and narrow with high banks till about Khinnanauli. In fact a little east of Khinnanauli it starts widening, giving rise to a number of "Islands" where Sheeshum, *Dalbergia sisso*, grows in abundance. These wooded tracts in the widened river bed are known as "Sheeshum Islands" (Photograph 3 & 4). West of Dhikala where the river takes a turn to south-west, the Sheeshum Islands are replaced by Savannah grassland (Photograph 6). When the hydel project reservoir which was partially filled up in 1975-76 (Photograph 8), filled up to capacity in '79-'80, its rear end extended upto Khinnanauli FRH, submerging most of the savannah forests and the Sheeshum Islands.

There are a number of thickly forested ridges (Photograph 7) in the Park. The largest and the longest (though not the highest) runs through the middle of the Park in an east-west direction from Sajgadi Sot to Ledpani Sot. To the south of this median ridge are a number of small

ridges lying in north-south-west direction. The two larger-ones of these join the median ridge at Tunirokhar Sot and Chhotakoti Sot (Map 1). These ridges are the source of origin of a number of Sots (Sarotars or Springs) which are the secondary sources of water in the Park, primary being the Ram Ganga River. The highest ridge lies to the north of Dhikala. The highest point in the Park being Kaunda FRH (1210 m). The southern part of Park, south of the median ridge, is comparatively less green and bears more deciduous vegetation.

(iii) Climate :

A. Seasons

There are three distinct seasons :—

Cold Season : November to February ;

Hot Season : March to mid June ;

Rainy Season : Mid June to October although October is more hot than rainy.

B. Temperature

In the Park the temperature normally ranges from 3°C in December-January to 42°C in June. The maximum winter temperature rarely exceeds 30°C whereas the minimum summer temperature normally remains below 23°C. The maximum shade temperature seldom exceeds 44°C even in the bad hot weather. Since 1959 the lowest temperature of 0°C has been recorded in January 1964 and the highest of 47°C in May 1969 by the Kalagarh Hydel Project authorities. The maximum and minimum temperatures in the study area were recorded on a spring operated Thermohydrograph kept in the field laboratory in the years 1977-'78. The records revealed the lowest temperature of 5°C in December 1977 and the highest temperature of 42°C in May 1978 (Table I).

TABLE I. Showing Maximum and Minimum Temperature in 'C'

Months	Jan	Feb	Mar	Apr	May	Jun	Jul	Aug	Sep	Oct	Nov	Dec
Years												
1977												
Maximum	26	29	33	39	40	41	38	34	34	35	27	26
Minimum	6	6	9	15	18	21	23	22	20	15	7	5
1978												
Maximum	27	30	32	40	42	41	37	33	34	36	29	26
Minimum	6	7	10	16	19	20	22	23	21	16	8	6

C. *Rainfall*

South-West Monsoons are the main source of rainfall. Maximum rainfall occurs from mid June to September. August being the month of maximum rainfall (average for 50 years : 459.5 mm). The north-east Monsoon ushers in another wet spell in December-February with February receiving the maximum of winter rains (average for fifty years : 401 mm). November is the driest month with minimum (average for 50 years : 4.8 mm) rainfall. Pre-monsoon showers or thunder showers often accompanied by hail occur in the months of April and May.

The monthly rainfall recorded in the study area varied from 0 mm in March & November 1977 and May 1978 to 664 mm in September 1978 (Table II).

TABLE II. Rainfall in mm.

Months	Jan	Feb	Mar	Apr	May	Jun	Jul	Aug	Sep	Oct	Nov	Dec
Years												
1977	36	2	0	19	24	147	401	375	182	28	0	80
1978	7	25	44	21	0	227	326	607	664	32	4	11

D. *Humidity*

Since the study area is located in the forested foothills of the outer Himalaya, it remains adequately humid throughout the year. Data on relative humidity collected by a spring operated thermohydrograph in the field laboratory indicated that the maximum relative humidity of 98% was reached during the monsoon months. Even during the dry period the relative humidity seldom fell below 57%.

E. *Frost Dew and Fog*

From November to February the nights can be very cold with much frost and dew, and in the low lying localities such as Patli Dun a dense fog lingers often till after 10 A. M. From March to the onset of Monsoons, frost and fog are absent, but dew is deposited uptill April.

F. *Winds, Haze and Thunder Storms*

A valley wind, locally known as 'Dadu' blows down the valley beginning about 9 A. M. and dying down about 8 P. M. This brings down the night temperature. In the hot month from mid March to

mid June the 'Dadu' is followed by a hot wind blowing up the valley from 10 A. M. to 8 P. M. During this period the air becomes very dry with much dust in suspension giving rise to a thick haze, which is only interrupted by thunderstorms.

(iv) **Soil Geology :**

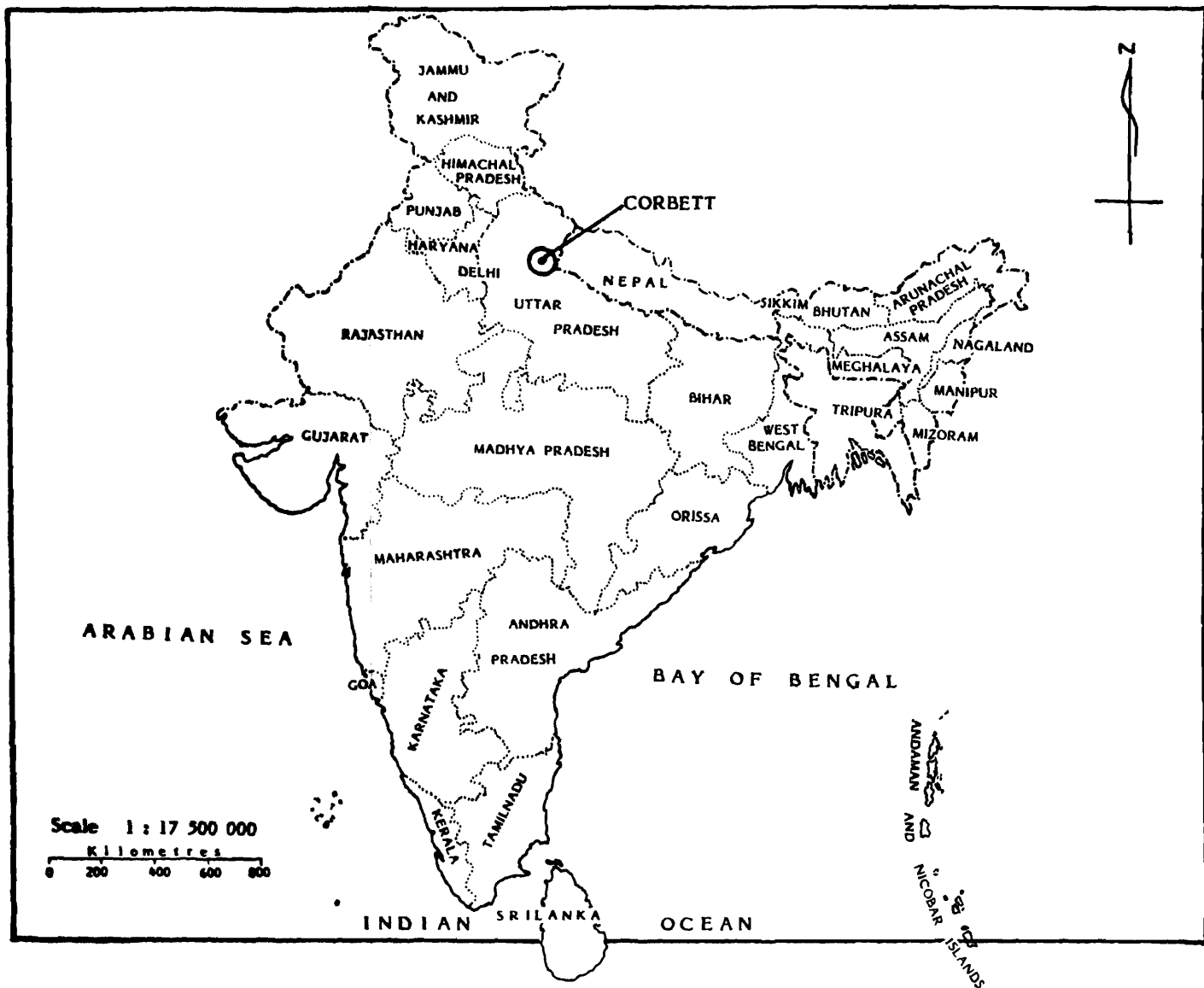
The Park is situated in the Siwaliks. Its soil consists mainly of :-

- | | |
|---------------------------|--|
| (1) Recent Deposits | (a) Horizontal river gravel and alluvium
(b) Deposits of the Bhabar Zone |
| (2) Siwalik Series | (a) Upper Siwalik conglomerate
(b) Middle Siwalik Sandrock
(c) Lower Siwalik (Nahan)
Sandstone separated from the Siwalik formation by the great Boundary Fault |
| and | |
| (3) Older Himalayan rocks | (a) Upper Tal
(b) Lower Tal
(c) Basic effusives
(d) Krol
(e) Infra Krol
(f) Nagthat
(g) Chadpur (with granite)
(h) Metamorphic |

The recent deposits are manifest in the (i) coarse gravel, cobbles and torrent boulders mixed with ferruginous sand and silica which line the margins of Ram Ganga in particular and whole *Bhabar* zone in general; (ii) river gravel and alluvium along the bed of Ram Ganga and sheeshum islands, lower terraces of Khinnanauli and Kanda blocks.

The Siwalik conglomeration is usually composed of large and rounded quartzite pebbles set in ferruginous sand forming alternate, coarse and fine, bands in sandy loamy and clay soil. This conglomeration occupies the whole of Dhikala, Dhulwa, higher terraces of Khinnanauli, Paterpani, Gaujpani, Shishum Khata, and Jhirna blocks.

The older Himalayan rocks consist mostly of massive dark blue-grey lime stone and a few grits and shales. These rocks are met with only in a part of Kanda block.



Map 1. The location of Corbett National Park.

The various foregoing formations are responsible for relative differences in soil composition, depth of soil, topography and soil drainage etc. in various parts of the Park and in turn, influence the diversity and distribution of flora.

(v) **Vegetation :**

The natural forest of the Park is confined to the Bhabar tract of Siwalik formation at altitudes of 400-1200 m., with varied topography of many temporary marshy depressions, ravines and plateau land. One hundred and ten species of trees, fifty-one species of shrubs, twenty seven species of climbers and thirty-three species of Bamboos and grasses are known from the Park.

The dominant tree species in the park is *Shorea robusta* (Sal), forming almost pure stands (Photograph 5). A frequent associate of "Sal" is "Haldu" *Adina cardifolia*.

On the higher ridges *Anogeissus latifolia* (Bakli), occurs predominantly, and the other association are *Piliostigma malabaricum* (Khetwa), *Bauhinia racemosa* (Gurial), *Kydia calycina* (Pula), *Legerstroemia parviflora* (Dhauri), *Cassia fistula* (Amaltas, the Indian Laburnum), *Semecarpus anacardium* (Bhilawa), *Emblica officinalis* (Amla) and *Ziziphus mauritiana* (Ber) and the less common species are *Holoptelea integrifolia* (Papri, the Indian Elm), *Carya arborea* (Kumbhi), *Madhuca indica* (Mahwa).

Along dry nallahs on exposed habitats occur *Wendlandia heynei* (Trichoniya), *Mallotus philippensis* (Rohni) and *Syzygium cumini* (Jamun).

Dalbergia sissoo—*Acacia catechu* association in Ramganga river bordering savanah at Dhikala is an interesting feature in the landscape of the Park.

Amongst the shrubs *Clerodendrum viscosum*, *Colebrookia oppositifolia*, *Adhatoda vasica*, *Helicteros isora* and *Woodfordia fruitcosa* are predominant, while the climbers like *Milletia auriculata*, *Cryptolepis buchamani*, *Porana paniculata* *Phamera vahlii* and *Vallaris solanacea* are common covering trees with foliage and flowers.

Bamboos occur frequently in the Park in several blocks. Amongst the palms, in addition to *Phoenix acaulea*, a quite rare palm "*Wallichia densiflora*" is noticeable.

The only indigenous conifer (a member of Gymnosperms) in the park is *Pinus roxburghii* (Chir) in the compartment No. 9/10, at Ghilmodya Sot.

In the savannah forests or "Chauds" (as they are locally called) mostly on the flats of Patli Dun along banks of Ramganga river, grasses like *Themeda arundinacea*, *Thysanolena maxima* and *Vetiveria zizanioides* are abundant while on burnt soil, they are associated with herbs viz. *Vicoa indica*, *Trichodesma indicum*, *Lactuca* sp., *Crotalaria* sp., *Desmodium* sp. and *Polygala* sp. In the other open areas grasses like *Eulaliopsis binata*, *Apluda mutica*, *Oplismenus compositus* and *Eragrostia uniloides* are common.

The two beautiful ground orchids, *Zeuxine* sp., *Eulophia* sp., and also the dwarf undershrub-*Pygmae opremna herbacea* occur scattered and are comparatively rare.

The common weeds, which are already established and are likely to effect the native herbaceous vegetation are *Lantana* sp., *Acanthospermum hispidum* and *Xanthium strumaricum*.

FAUNA

Salient Features

Our studies revealed that the Park is very rich in fauna. Fifty species of mammals, and five hundred and seventy seven species of birds, have been observed and recorded (Appendixes I & II).

(A) MAMMALS

Fifty species of mammals (Photographs 9-26) were observed in various parts of the Park. A list of species along with their status and distribution is given in Appendix I. The notable feature about the mammal fauna of the Park is the survival of some populations of the following depleted species, in this pocket of their extensive formal habitat.

1. *Felis bengalensis*, The Leopard Cat.
2. *Panthera tigris*, The Tiger.
3. *Cuon alpinus*, The Wild Dog.
4. *Axis procinus*, The Hog Deer.
5. *Manis crassicaudata*, The Indian Pangolin.

About thirty years ago these species existed in large numbers in the whole of Himalayan terai in U.P. Now they are hardly seen in Terai and Bhabar forests elsewhere.

The Himalayan Black Bear, *Selenarctos thibetanus* visits the Park occasionally in winter, obviously descending from higher ranges in the north. The only goat-antelope residing in the Park, the Goral,

Naemorhedus goral restricts itself to the ridges north of river Ram Ganga. The elephants used to leave the Park during rains. They climbed the higher and drier ridges in the neighbouring Lansdown division across the Ram Ganga to save themselves from the ferocious blood sucking Horse Flies which appear in the Park in large numbers during summer rains. With the submersion of their traditional migration route (river bed between Dhikala and Buxar) in 1976-77 about ninety animals stayed in the Park during summer rains of 1978. But they confined themselves mainly to the drier southern (south of the median ridge) part of the Park near Bijrani.

About thirty years back Bara Singha or the Swamp Deer, *Cervus duvauceli* was a common animal in vicinity of the Park where Tumaria Dam stands now. Its number decreased gradually till it disappeared about twenty years back. On 9th March 1978 a lone female Swamp Deer (Photograph 10) was sighted a Dhikala along with a herd of Cheetal, thereafter it was observed almost daily either with a herd of Cheetal or Hog Deer till 26th March. After 26th March 1978 it disappeared as suddenly as it had appeared.

(B) BIRDS

The bird fauna of Park is rich and diverse (Photographs 27-51). Three hundred and fifty four species have been observed and listed (Appendix II). An attempt has been made to give their local distribution wherever possible. The Park attracts a large number of migratory birds. The river is a source of attraction to many winter migrants like water birds and waders. A number of high altitude species also visit the Park during winter as altitudinal migrants, presumably to escape from the unfavourable conditions higher up. Summer too brings in a large quota of visitors. Being situated on the migratory route of a number of avian species, the Park also witnesses quite a few passage migrants. About twenty percent of the resident birds of the Park also indulge in local altitudinal or seasonal migration. Perhaps the most interesting feature of the Park is its being the meeting place (overlap area) of a number of high altitude and plains and eastern and western races of many avian species.

(C) REPTILES

The outstanding feature of the reptilian fauna (Photographs 52-57) of the Park is the occurrence of the four largest (in size) and threatened species of Indian reptiles. Both the Crocodile, *Crocodilus palustris* (Photograph 57) and the Gharial, *Gavialis gangeticus* occur in deeper

pools in the river Ram Ganga. Some of these have already migrated to the lake that has started forming at the southwestern end. The Indian Python, *Python molurus* (Photograph 54) and the King Cobra, *Ophiophagus hannah* are also found in the forested areas of the Park (Appendix III).

APPENDIX-I

MAMMALS

Order : INSECTIVORA

Family : ERINACEIDAE

Genus : **Hemiechinus** Fitzinger

1. **Hemiechinus auritus collaris** Gray, Long-eared Hedgehog.

Ellerman and Morrison-Scott. Checklist : 25.

Status : Uncommon.

Distribution : Occasionally seen in the drier parts of the Park near Bijrani.

Family : SORICIDAE

Genus : **Suncus** Ehrenberg

2. **Suncus murinus tytleri** Blyth, House Shrew.

Ellerman and Morrison-Scott. Checklist : 67.

Status : Uncommon.

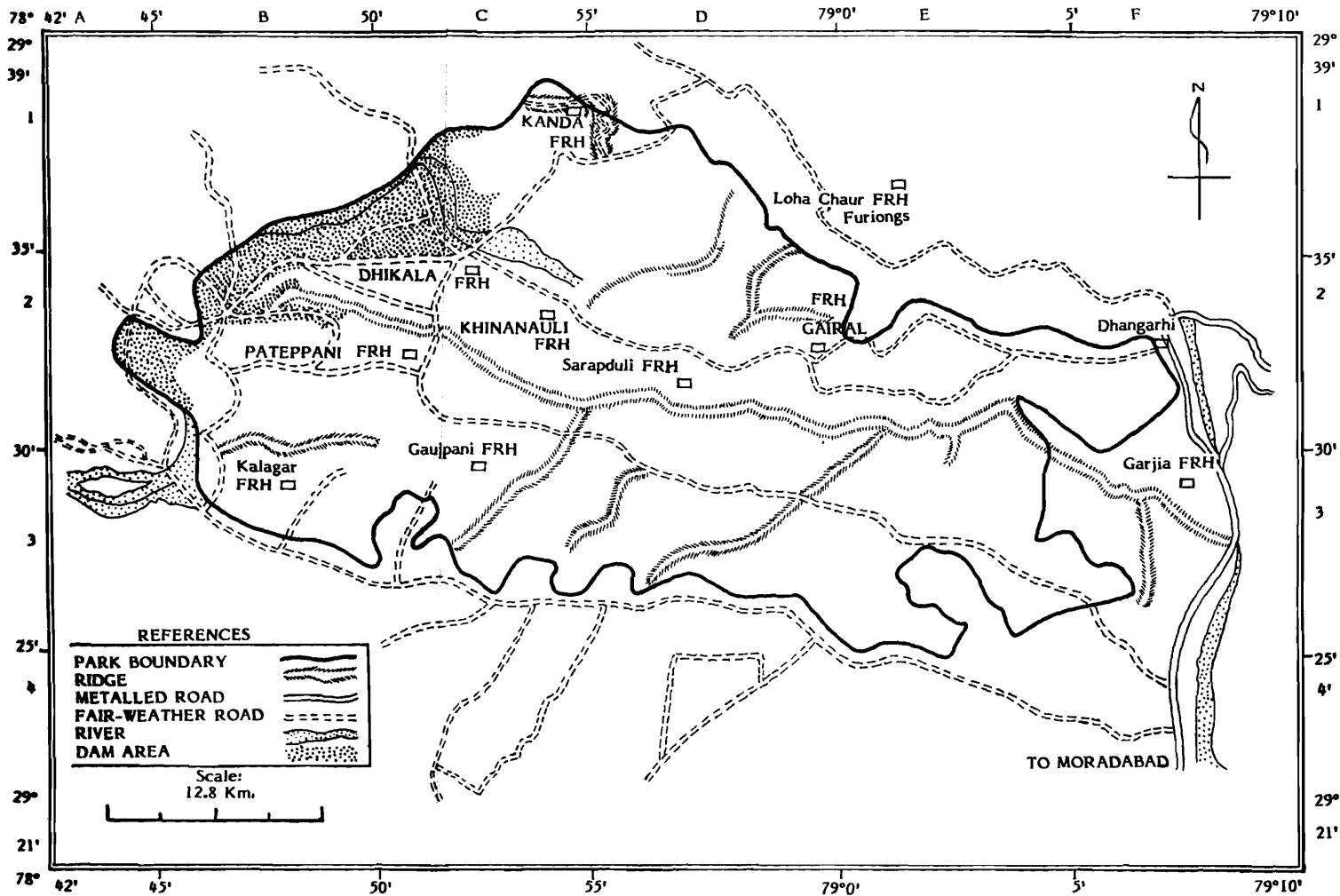
Distribution : Occasionally seen in the forest rest house and residential quarters of the staff.

3. **Suncus etruscus micronyx** Blyth, Savi's Pygmy Shrew.

Ellerman and Morrison-Scott. Checklist : 68.

Status : Uncommon.

Distribution : Occasionally found in about the same situation as the House Shrew.



Map 2. Area of the Corbett National Park.

Order : CHIROPTERA

Family : PTEROPODIDAE

Genus : **Pteropus** Brisson

4. **Pteropus giganteus giganteus** Brunnich, Indian Flying Fox.

Ellerman and Morrison-Scott. Checklist : 97.

Status : Common.

Distribution : Occurs throughout the Park. Not easily seen on account of its nocturnal habit.

Genus : **Cynopterus** F. Cuvier

5. **Cynopterus sphinx sphinx** Vahl, Short-nosed Fruit Bat.

Ellerman and Morrison-Scott. Checklist : 98.

Status : Common.

Distribution : Occurs throughout the Park. Not easily seen on account of its nocturnal habit.

Family : RHINOLOPHIDAE

Genus : **Rhinolophus** Lacépède

6. **Rhinolophus cornutus blythi** Andersen, Little Japanese Horseshoe Bat.

Ellerman and Morrison-Scott. Checklist : 117.

Status : Common.

Distribution : Everywhere in the Park. Not easily seen on account of its nocturnal habit.

Genus : **Hipposideros** Gray

7. **Hipposideros cineraceus micropus** Peters, Leaf-nosed bat.

Ellerman and Morrison-Scott. Checklist : 128.

Status : Common.

Distribution : Not easily seen on account of its nocturnal habit.

Family : VESPERTILIONIDAE

Genus : **Murina** Gray

8. **Murina grisea** Peters, Peters' Tube-nosed Bat.

Ellerman and Morrison-Scott. Checklist : 186.

Status : Common.

Distribution : Not easily seen on account of its nocturnal habit.

Genus : **Myotis** Kaup9. **Myotis formosus** Hodgson, Hodgson's Bat.

Ellerman and Morrison-Scott. Checklist : 146.

Status : Common.

Distribution : Everywhere in the Park. Not easily seen on account of its nocturnal habit.

Genus : **Pipistrellus** Kaup10. **Pipistrellus mimus mimus** Wroughton, Indian Pygmy Pipistrelle.

Ellerman and Morrison-Scott. Checklist : 166.

Status : Common.

Distribution : Not easily seen on account of its nocturnal habit.

Genus : **Plecotus** GEOFFROY11. **Plecotus auritus homochrous** Hodgson, Long-eared Bat.

Ellerman and Morrison-Scott. Checklist : 181.

Status : Common.

Distribution : Not easily seen on account of its nocturnal habit.

Genus : **Scotophilus** Leach12. **Scotophilus heathi heathi** Horsfield, Greater Yellow Bat.

Ellerman and Morrison-Scott. Checklist : 179.

Status : Common.

Distribution : All over the Park, not easily seen on account of its nocturnal habit.

Order : PRIMATES

Family : CERCOPITHECIDAE

Genus : **Macaca** Lacépède

13. **Macaca mulatta villosa** True, Rhesus Macaque.

Ellerman and Morrison-Scott. Checklist : 198.

Status : Very common.

Distribution : Throughout the Park. Often seen in the Sheesham islands and other deciduous patches of forest in the park.

Genus : **Presbytis** Eschcholtz

14. **Presbytis entellus schistaceus** Hodgson, Langur (Entellus Monkey).

Ellerman and Morrison-Scott. Checklist : 205.

Status : Very common.

Distribution : Everywhere in the Park. The troops generally hang around the trees for fruits, buds and sprouting leaves.

Order : PHOLIDOTA

Family : MANIDAE

Genus : **Manis** Linnaeus

15. **Manis crassicaudata** Gray, Indian Pangolin or Scaly Anteater.

Ellerman and Morrison-Scott. Checklist : 215.

Status : Rare.

Distribution : Seen only once at Garjia.

Order : CARNIVORA

Family : CANIDAE

Genus : **Canis** Linnaeus

16. **Canis aureus** Linnaeus, Asiatic Jackal.

Ellerman and Morrison-Scott. Checklist : 220.

Status : Very common.

Distribution : Throught the Park. Often seen in pairs or small packs.

Genus : **Vulpes** Oken

17. **Vulpes vulpes montana** Pearson, Common Red Fox.

Ellerman and Morrison-Scott. Checklist : 226.

Status : Uncommon.

Distribution : Mostly seen at dusk or dawn, in winter.

Genus : **Cuon** Hodgson

18. **Cuon alpinus primaevus** Hodgson, Red Dog or Indian Wild Dog.

Ellerman and Morrison-Scott. Checklist : 233.

Status : Rare.

Distribution : Reported only from Bijrani (Garjia Sot).

Family : **URSIDAE**

Genus : **Selenarctos** Heude

19. **Selenarctos thibetanus** G. Cuvier, Asiatic Black Bear.

Ellerman and Morrison-Scott. Checklist : 239.

Status : Uncommon.

Distribution : Seen mostly during winter presumably when it migrates to lower altitudes on account of unfavourable conditions.

Genus : **Melursus** Meyer

20. **Melursus ursinus** Shaw, Sloth Bear.

Ellerman and Morrison-Scott. Checklist : 241.

Status : Uncommon.

Distribution : Mostly found along the Central Ridge.

Family : **MUSTELIDAE**

Genus : **Martes** Pinel

21. **Martes flavigula** Boddaert, Yellow-throated Marten.

Ellerman and Morrison-Scott. Checklist : 249.

Status : Uncommon.

Distribution : Found mostly in the ridge north of Ram Ganga River.

Genus : **Lutra** Brisson

22. **Lutra lutra monticola** Hodgson, Common Otter.

Ellerman and Morrison-Scott. Checklist : 277.

Status : Common.

Distribution : Along the Ram Ganga River and reservoir, often in packs of five to fifteen.

Family : **VIVERRIDAE**

Genus : **Viverricula** Hodgson

23. **Viverricula indica wellsi** Pocock, Rasse or small Indian Civet.

Ellerman and Morrison-Scott. Checklist : 283.

Status : Common.

Distribution : Throughout the Park. Not easily seen because of its nocturnal habits. Leaves plenty of foot-prints in the river bed and soft ground.

Genus : **Paradoxurus** Cuvier

24. **Paradoxurus hermaphroditus bondar** Desmarest, Common Palm Civet or Toddy Cat.

Ellerman and Morrison-Scott. Checklist : 236.

Status : Common.

Distribution : Everywhere in the Park. Not easily seen because of its nocturnal habits. Leaves plenty of foot-prints in the river bed and soft ground.

Genus : **Paguma** Gray

25. **Paguma larvata grayi** Bennett, Masked Palm Civet or the Himalayan Palm Civet.

Ellerman and Morrison-Scott. Checklist : 289.

Status : Common.

Distribution : Everywhere in the Park. Not easily seen because of its nocturnal habits. Plenty of foot-prints seen in the river bed and soft ground.

Genus : **Herpestes** Illiger

26. **Herpestes edwardsi nyula** Hodgson, Indian Grey Mongoose.

Ellerman and Morrison-Scott. Checklist : 296.

Status : Common.

Distribution : Throughout the Park. Often seen in scrub and grassy patches.

Family : FELIDAE

Genus : **Felis** Linnaeus

27. **Felis chaus affinis** Gray, Jungle Cat.

Ellerman and Morrison-Scott. Checklist : 306.

Status : Common.

Distribution : Difficult to observe on account of shy habits, keeps to scrub and grassland.

28. **Felis bengalensis horsefieldi** Gray, Leopard Cat.

Ellerman and Morrison-Scott. Checklist : 313.

Status : Common.

Distribution : Difficult to observe on account of shy habits, keeps to scrub and grassland.

Genus : **Panthera** Oken

29. **Panthera tigris tigris** Linnaeus, Tiger.

Ellerman and Morrison-Scott. Checklist : 318.

Status : Common.

Distribution : Found everywhere in the Park. Difficult to observe during day time on account of nocturnal and shy habits. Often seen in early mornings and late evenings while crossing the forest roads or stalking its prey in scrub or grassy glades. It is sure to be observed in vicinity of a kill. In summer usually rests under shady vegetation in or along the river bed not very far from water. The call can often be heard at night especially during mating season (Oct. to Feb.).

30. **Panthera pardus** Linnaeus, Leopard.

Ellerman and Morrison-Scott. Checklist : 316.

Status : Common.

Distribution : Very difficult to observe on account of nocturnal and shy habits. Can often be heard at night.

Order : PROBOSCIDEA

Family : ELEPHANTIDAE

Genus : **Elephas** Linnaeus

31. **Elephas maximus** Linnaeus, Indian Elephant.

Ellerman and Morrison-Scott. Checklist : 336.

Status : Very common.

Distribution : Everywhere in the Park. Found in herds of five to about fifty. Usually confine to the greener and wetter areas of the Park. Immediately before and during the rains a number of herds migrate from the Park to the neighbouring forest division and return again in winter.

Order : ARTIODACTYLA

Family : BOVIDAE

Genus : **Boselaphus** Blainville

32. **Boselaphus tragocamelus** Pallas, Nilgai or Blue Bull.

Ellerman and Morrison-Scott. Checklist : 379.

Status : Rare.

Distribution : Seen only south of Bijrani, bordering the cultivated areas.

Genus : **Naemorhedus** H. Smith

33. **Naemorhedus goral** Hardwicke, Goral.

Ellerman and Morrison-Scott. Checklist : 401.

Status : Common.

Distribution : Found only in the ridges north of Ram Ganga River. Best observed from Sarapduli rest house in summer when the animals come down to water on the opposite bank.

Family : CERVIDAE

Genus : **Axis** H. Smith

34. **Axis axis axis** Erxleben, Chital or Axis-Deer or Spotted Deer.

Ellerman and Morrison-Scott. Checklist : 360.

Status : Abundant.

Distribution : Found in herds of five to seventy or more. Large herds of hundred and more can be seen shortly before sunset and after sunrise in grassy glades where they come out to feed.

35. **Axis porcinus porcinus** Zimmerman, Hog Deer.

Ellerman and Morrison-Scott. Checklist : 360.

Status : Very common.

Distribution : Found only in the grassy glades of Dhikala Khinanauli and Sheesham Island.

Genus : **Cervus** Linnaeus

36. **Cervus unicolor unicolor** Kerr, Sambar.

Ellerman and Morrison-Scott. Checklist : 362.

Status : Very common.

Distribution : Everywhere in the Park. Restricted to well forested tracts.

Genus : **Muntiacus** Rafinesque

37. **Muntiacus muntjak vaginalis** Boddaert, Indian Muntjak or Barking Deer.

Ellerman and Morrison-Scott. Checklist : 356.

Status : Very common.

Distribution : Everywhere in the Park. Restricted to well forested tracts of the Park.

Family : SUIDAE

Genus : **Sus** Linnaeus

38. **Sus scrofa cristatus** Wagner, Wild Boar

Ellerman and Morrison-Scott. Checklist : 345.

Status : Very Common.

Distribution : Everywhere in the Park.

Order : LAGOMORPHA

Family : LEPORIDAE

Genus : **Lepus** Linnaeus

39. **Lepus nigricollis ruficaudatus** Geoffroy, Indian Hare or Black-naped Hare.

Ellerman and Morrison-Scott. Checklist : 437.

Status : Common.

Distribution : All over the Park, more so in grassy glades and scrubs.

Order : RODENTIA

Family : SCIURIDAE

Genus : **Funambulus** Lesson

40. **Funambulus pennanti** Wroughton, Northern Palm Squirrel.

Ellerman and Morrison-Scott. Checklist : 495.

Status : Common.

Distribution : Only in the south-eastern part near Bijrani.

Family : MURIDAE

Genus : **Bandicota** Gray

41. **Bandicota indica indica** Bechstein, Large Bandicoot Rat.

Ellerman and Morrison-Scott. Checklist : 618.

Status ; Common.

Distribution : Burrows found all over the Park. Difficult to observe on account of nocturnal habit.

Genus : **Golunda** Gray

42. **Golunda ellioti myothrix** Hodgson, Indian Bush Rat.

Ellerman and Morrison-Scott. Checklist : 614.

Status : Common.

Distribution : Throughout the Park, mostly in scrub.

Genus : **Mus** Linnaeus

43. **Mus booduga booduga** Gray, Little Indian Field Mouse.

Ellerman and Morrison-Scott. Checklist : 609.

Status : Common.

Distribution : Mostly in the southernmost parts of the Park.

44. **Mus musculus homourus** Hodgson, House Mouse.

Ellerman and Morrison-Scott. Checklist : 607.

Status : Common.

Distribution : Near human habitation only.

45. **Mus musculus tytleri** Blyth, House Mouse.

Ellerman and Morrison-Scott. Checklist : 608.

Status : Common.

Distribution : Near human habitation only.

Genus : **Nesokia** Gray

46. **Nesokia indica indica** Gray and Hardwicke, Short-tailed Molerat or Bandicoot rat.

Ellerman and Morrison-Scott. Checklist : 619.

Status : Common.

Distribution : Throughout the Park.

Genus : **Rattus** Fischer

47. **Rattus rattus gangutrianus** Hinton, House Rat or Black Rat.

Ellerman and Morrison-Scott. Checklist : 586.

Status : Common.

Distribution : Throughout the Park, specially near human habitation.

48. **Rattus rattus rufescens** Gray, House Rat or Black Rat.

Ellerman and Morrison-Scott. Checklist : 582.

Status : Common.

Distribution : Throughout the Park especially near human habitation.

Genus : **Tatera** Lataste

49. **Tatera indica indica** Hardwicke, Indian Gerbil or Antelope Rat.

Ellerman and Morrison-Scott. Checklist : 636.

Status : Common.

Distribution : Mostly in the southern part of the Park.

Family : HYSTRICIDAE

Genus : **Hystrix** Linnaeus

50. **Hystrix indica indica** Kerr, Indian Crested Porcupine.

Ellerman and Morrison-Scott. Checklist : 519.

Status : Very common.

Distribution : Throughout the Park.

APPENDIX—II

BIRDS

Order : **PODICIPEDIFORMES**

Family : **PODICIPEDIDAE**
(Grebes)

Genus : **Podiceps** Latham

1. Podiceps cristatus cristatus (Linnaeus), Great Crested Grebe.

Salim Ali & Ripley, HB. No. 3, Vol. 1 : 3.

Status : Winter visitor. Common.

Distribution : Lake, from Dhikala to Kalagarh, often seen 30-50 metres inside along the shore-line.

2. Podiceps ruficollis capensis Salvadori, Little Grebe or Dabchick.

Salim Ali & Ripley, HB. No. 5, Vol. 1 : 6.

Status : Resident, rare.

Distribution : Lake, from Dhikala to Kalagarh, often seen 30-50 metres inside along the shore-line.

Order : **PELECANIFORMES**

Family : **PELECANIDAE**
(Pelicans)

Genus : **Pelecanus** Linnaeus

3. Pelecanus onocrotalus Linnaeus, White or Rosy Pelican.

Salim Ali & Ripley, HB. No. 20, Vol. 1 : 27.

Status : Rare winter visitor, observed only twice in three years.
Very rare.

Distribution : Lake and Ram Ganga River.

4. **Pelecanus philippensis philippensis** Gmelin, Spotted billed or Grey Pelican.

Salim Ali & Ripley, HB. No. 21, Vol. 1 : 29.

Status : Resident and locally migratory, seen only on a few occasions in 3 years. Very rare.

Distribution : Lake and Ram Ganga River.

Family : PHALACROCORACIDAE
(Cormorants and Darters)

Genus : **Phalacrocorax** Brisson

5. **Phalacrocorax carbo sinensis** (Shaw), Large Cormorant.

Salim Ali & Ripley, HB. No. 26, Vol. 1 : 37.

Status : Resident and locally migratory, very common.

Distribution : Lake. Seen fishing throughout the day. Roost and rest in partially submerged Sheeshum Islands. Large flocks seen leaving the Lake area in the morning for an eastward destination and again returning at dusk.

6. **Phalacrocorax fuscicollis** Stephens, Indian Shag.

Salim Ali & Ripley, HB. No. 27, Vol. 1 : 39.

Status : Resident, moving locally with water conditions and fish supply ; common.

Distribution : Lake and Ram Ganga River.

7. **Phalacrocorax niger** (Vieillot), Little Cormorant.

Salim Ali & Ripley, HB. No. 28, Vol. 1 : 41.

Status : Resident, moving with water conditions ; common.

Distribution : Same as large Cormorant. This species is met with in much greater numbers though.

Genus : **Anhinga** Brisson

8. **Anhinga rufa melanogaster** Pennant, Darter or Snake-bird.

Salim Ali & Ripley, HB. No. 29, Vol. 1 : 43.

Status : Resident, with local movements depending on water conditions ; common.

Distribution : Lake and Ram Ganga River.

Order : CICONIFORMES

Family : ARDEIDAE
(Herons, Egrets, Bitterns)

Genus : *Ardea* Linnaeus

9. *Ardea cinerea rectirostris* Gould, Eastern Grey Heron.

Salim Ali & Ripley, HB. No. 36, Vol. 1 : 55.

Status : Resident, Common.

Distribution : Along lake and Ram Ganga River. Observed fishing at dawn and dusk.

10. *Ardea purpurea manilensis* Meyen, Eastern Purple Heron.

Salim Ali & Ripley, HB. No. 37, Vol. 1 : 57.

Status : Resident and local migrant, rare.

Distribution : Lake, along the shore-line from Dhikala to Kalagarh.

Genus : *Ardeola* Boie

11. *Ardeola grayii grayii* (Sykes), Indian Pond Heron or Paddybird.

Salim Ali & Ripley, HB. No. 42, Vol. 1 : 63.

Status : Resident, shifting with drought and flood conditions ; very common.

Distribution : Loose parties near the Lake and Ram Ganga River, 30 to 50 metres along the shoreline from Dhikala to Kalagarh.

Genus : *Bubulcus* Bonaparte

12. *Bubulcus ibis coromandus* (Boddaert), Cattle Egret.

Salim Ali & Ripley, HB. No. 44, Vol. 1 : 66.

Status : Very common.

Distribution : Near Lake and Ram Ganga River.

Genus : *Egretta* Forster

13. *Egretta alba modesta* (J. E. Gray), Eastern Large Egret.

Salim Ali & Ripley, HB. No. 46, Vol. 1 : 69.

Status : Resident, shifting locally with water conditions ; common.

Distribution : Lake, from Dhikala to Kalagarh and near Ram Ganga River.

14. *Egretta intermedia intermedia* (Wagler), Smaller or Median Egret.

Salim Ali & Ripley, HB. No. 47, 48, Vol. 1 : 71.

Status : Resident, shifting locally with water conditions ; common.

Distribution : Near the Lake from Dhikala to Kalagarh.

15. **Egretta garzetta garzetta** (Linnaeus), Little Egret.

Salim Ali & Ripley, HB. No. 49, Vol. 1 : 72.

Status : Resident, shifting with water conditions, very common.

Distribution : Observed fishing at dawn and dusk near the Lake and Ram Ganga River.

Genus : **Nycticorax** T. Forster

16. **Nycticorax nycticorax nycticorax** (Linnaeus), Night Heron.

Salim Ali & Ripley, HB. No. 52, Vol. 1 : 78.

Status : Resident, shifting with water conditions, rare.

Distribution : Near the Lake and Ram Ganga River.

Genus : **Ixobrychus** Billberg

17. **Ixobrychus cinnamomeus** (Gmelin), Chestnut Bittern.

Salim Ali & Ripley, HB. No. 56, Vol. 1 : 84.

Status : Resident, subject to local movements, rare.

Distribution : Observed on three occasions in two years near the Lake in marshy land.

Family : **CICONIDAE**
(Storks)

Genus : **Mycteria** Linnaeus

18. **Mycteria leucocephala** (Pennant), Painted Stork.

Salim Ali & Ripley, HB. No. 60, Vol. 1 : 93.

Status : Visitor, shifting locally with water conditions, very rare.

Distribution : Observed once in three years near the Lake.

Genus : **Ciconia** Brisson

19. **Ciconia episcopus episcopus** (Boddaert), Whitenecked Stork.

Salim Ali & Ripley, HB. No. 62, Vol. 1 : 98.

Status : Visitor, common.

Distribution : Near the Lake. Observed fishing at dawn and dusk.

20. **Ciconia ciconia ciconia** (Linnaeus), White Stork.

Salim Ali & Ripley, HB. No. 63, Vol. 1 : 99.

Status : Winter visitor, very rare.

Distribution : Observed only twice in two years near the Lake.

21. **Ciconia nigra** (Linnaeus), Black Stork.

Salim Ali & Ripley, HB. No. 65, Vol. 1 : 102.

Status : Winter visitor, very common.

Distribution : Very common during winter from December to March. Flocks of 10 to 45 individuals were observed during winter months near Dhikala, Paterpani and Khinanauli. Usually observed fishing near the Lake and river.

Genus : **Ephippiorhynchus** Bonaparte

22. **Ephippiorhynchus asiaticus asiaticus** (Latham), Blacknecked Stork.

Salim Ali & Ripley, HB. No. 66, Vol. 1 : 104.

Status : Resident, common.

Distribution : Commonly observed near the Lake and river in pairs.

Family : THRESKIORNITHIDAE
(Ibises, Spoonbills)

Genus : **Plegadis** Kaup

23. **Plegadis falcinellus falcinellus** (Linnaeus), Glossy Ibis.

Salim Ali & Ripley, HB. No. 71, Vol. 1 : 114.

Status : Winter visitor, very rare.

Distribution : Near the Lake from Dhikala to Kalagarh, 30 to 50 metres from shore-line. Observed twice in two years.

Order : ANSERIFORMES

Family : ANATIDAE
(Ducks, Geese, Swans)

Genus : **Anser** Brisson

24. **Anser indicus** (Latham), Barheaded Goose.

Salim Ali & Ripley, HB. No. 82, Vol. 1 : 131.

Status : Winter visitor, common.

Distribution : Lake and river, from Dhikala to Kalagarh, often seen 30 to 50 metres inside along the shore-line.

Genus : **Dendrocygna** Swainson

25. **Dendrocygna bicolor** (Vieillot), Large Whistling Teal.

Salim Ali & Ripley, HB. No. 89, Vol. 1 : 139.

Status : Resident, very rare.

Distribution : Near the Lake, reedy and vegetation-covered pools.

Genus : **Tadorna** Von Oken26. **Tadorna ferruginea** (Pallas), Ruddy Shelduck or Brahminy Duck.

Salim Ali & Ripley, HB. No. 90, Vol. 1 : 141.

Status : Winter visitor, common.

Distribution : Lake, from Dhikala to Kalagarh, often seen 30 to 50 metres inside along the shore-line.

27. **Tadorna tadorna** (Linnaeus), Common Shelduck.

Salim Ali & Ripley, HB. No. 91, Vol. 1 : 144.

Status : Winter visitor, common.

Distribution : Lake and river, flocks of 60 to 200 were observed in river.

Genus : **Marmaronetta** Reichenbach28. **Marmaronetta angustirostris** (Menetries), Marbled Teal.

Salim Ali & Ripley, HB. No. 92, Vol. 1 : 147.

Status : Rare winter visitor.

Distribution : Near the Lake, reedy and matted vegetation-covered pools. Normally avoiding open water.

Genus : **Anas** Linnaeus29. **Anas acuta** Linnaeus, Pintail.

Salim Ali & Ripley, HB. No. 93, Vol. 1 : 149.

Status : Winter visitor, rare.

Distribution : Lake from Dhikala to Kalagarh, often seen 30 to 50 metres inside along the shore-line from October to March.

30. **Anas crecca crecca** Linnaeus, Common Teal.

Salim Ali & Ripley, HB. No. 94, Vol. 1 : 151.

Status : Winter visitor, very common.

Distribution : Lake from Dhikala to Kalagarh, often seen 30 to 50 metres inside along the shore-line. Three thousand to six thousand individuals were observed resting near the Lake in the months of February and March.

31. **Anas poecilorhyncha poecilorhyncha** J. R. Forster, Spotbill Duck.

Salim Ali & Ripley, HB. No. 97, Vol. 1 : 157.

Status : Resident and locally migratory, very rare.

Distribution : Near reedy vegetation-covered pools, rarely on river bank.

32. *Anas platyrhynchos* Linnaeus, Mallard.

Salim Ali & Ripley, HB. No. 100, Vol. 1 : 160.

Status : Winter visitor, rare.

Distribution : Lake from Dhikala to Kalagarh, often seen 30 to 50 metres inside along the shore-line.

33. *Anas strepera strepera* Linnaeus, Gadwall.

Salim Ali & Ripley, HB. No. 101, Vol. 1 : 163.

Status : Winter visitor, very rare.

Distribution : Near the Lake, in reedy marshes with plenty of cover.

34. *Anas penelope* Linnaeus, Wigeon.

Salim Ali & Ripley, HB. No. 103, Vol. 1 : 167.

Status : Winter visitor, very rare.

Distribution : Near shallow margins of Lake and Marshes.

35. *Anas querquedula* Linnaeus, Garganey or Bluewinged Teal.

Salim Ali & Ripley, HB. No. 104, Vol. 1 : 169.

Status : Early winter visitor, very rare.

Distribution : Shallow margins of Lake and marshes.

36. *Anas clypeata* Linnaeus, Shoveller.

Salim Ali & Ripley, HB. No. 105, Vol. 1 : 172.

Status : Winter visitor, very rare.

Distribution : Affects all type of inland waters, reservoirs, flooded ditches, river and the Lake.

Genus : *Netta* Kaup

37. *Netta rufina* (Pallas), Redcrested Pochard.

Salim Ali & Ripley, HB. No. 107, Vol. 1 : 177.

Status : Winter visitor, common.

Distribution : Lake from Dhikala to Kalagarh, often seen swimming in the Lake and in Ram Ganaga River. Commonly observed from October to mid March.

Genus : *Aythya* Boie

38. *Aythya ferina* (Linnaeus), Common Pochard.

Salim Ali & Ripley, HB. No. 108, Vol. 1 : 180.

Status : Winter visitor, very common.

Distribution : Open parts of Lake and river.

39. **Aythya nyroca** (Gouldenstaedt), White-eyed Pochard or Ferruginous Duck.

Salim Ali & Ripley, HB. No. 109, Vol. 1 : 182.

Status : Winter visitor, very rare.

Distribution : Lake, weedy and rush-covered places as well as more open pools.

40. **Aythya fuligula** (Linnaeus), Tufted Duck.

Salim Ali & Ripley, HB. No. 111, Vol. 1 : 185.

Status : Winter visitor, very rare.

Distribution : Lake and river.

41. **Aythya marila marila** (Linnaeus), Scaup Duck.

Salim Ali & Ripley, HB. No. 112, Vol. 1 : 187.

Status : Rare vagrant in winter.

Distribution : Near the Ram Ganga River and the Lake. Flocks of 6 to 75 individuals observed in February.

Genus : **Nettapus** (Brandt)

42. **Nettapus coromandelianus coromandelianus** (Gmelin), Cotton Teal or Quacky-Duck.

Salim Ali & Ripley, HB. No. 114, Vol. 1 : 190.

Status : Resident, very rare.

Distribution : Lake, vegetation-covered pools in river bed.

Order : FALCONIFORMES

Family : ACCIPITRIDAE
(Hawks, Vultures)

Genus : **Elanus** Savigny

43. **Elanus caeruleus vociferus** (Latham), Blackwinged Kite.

Salim Ali & Ripley, HB. No. 124, Vol. 1 : 212.

Status : Resident, common.

Distribution : Commonly seen throughout the Park. Usually observed resting silently on trees, electric wires and poles, etc.

Genus : **Pernis** Cuvier

44. **Pernis ptilorhynchus ruficollis** Lesson, Crested Honey Buzzard.

Salim Ali & Ripley, HB. No. 130, Vol. 1 : 222.

Status : Resident with local movements depending on food supply, common.

Distribution : Throughout the Park. Usually observed perching on the top of tall trees of Sheesham and Sal. Common from October to April.

Genus : **Milvus** Lacépède

45. **Milvus migrans govinda** Sykes, Pariah Kite.

Salim Ali & Ripley, HB. No. 133, Vol. 1 : 227.

Status : Resident, common.

Distribution : Commonly observed throughout the Park.

46. **Milvus migrans lineatus** (Gray), Blackeared or Large Indian Kite.

Salim Ali & Ripley, HB. No. 134, Vol. 1 : 229.

Status : Winter visitor, very rare.

Distribution : Throughout the Park during winter months.

Genus : **Haliastur** Selby

47. **Haliastur indus indus** (Boddaert), Brahminy Kite.

Salim Ali & Ripley, HB. No. 135, Vol. 1 : 230.

Status : Resident with some local seasonal movements, rare.

Distribution : Lake and Sheesham Island, observed resting on the top of Sheesham trees from September to March.

Genus : **Accipiter** Brisson

48. **Accipiter gentilis schvedowi** (Menzbier), Eastern Goshawk.

Salim Ali & Ripley, HB. No. 136, Vol. 1 : 233.

Status : Rare winter visitor.

Distribution : Throughout the Park, in dense forest.

49. **Accipiter badius dussumieri** (Temminck), Indian Shikra.

Salim Ali & Ripley, HB. No. 138, Vol. 1 : 235.

Status : Resident, common.

Distribution : Common throughout the Park. Usually observed resting on tree tops, electric wires, poles, etc.

50. **Accipiter trivirgatus indicus** (Hodgson), North Indian Crested Goshawk.

Salim Ali & Ripley, HB. No. 144, Vol. 1 : 240.

Status : Resident, very rare.

Distribution : Affects open deciduous and semi-evergreen forests of the Park.

51. **Accipiter nisus nisosimilis** (Tickell), Asiatic Sparrow-Hawk.

Salim Ali & Ripley, HB. No. 147, Vol. 1 : 243.

Status : Sparse winter visitor, very rare.

Distribution : Affects light forest of the Park.

52. **Accipiter nisus melaschistos** Hume, Indian Sparrow Hawk.

Salim Ali & Ripley, HB. No. 148, Vol. 1 : 245.

Status : Resident, rare.

Distribution : Throughout the Park in forests and well wooded tracts.

53. **Accipiter virgatus kashmiriensis** Whistler & Kinnear, West Himalayan Besra, Sparrow-Hawk.

Salim Ali & Ripley, HB. No. 149, Vol. 1 : 246.

Status : Resident, very rare.

Distribution : Throughout the park in broken forests.

Genus : **Buteo** Lacépède

54. **Buteo rufinus rufinus** (Cretzschmati), Longlegged Buzzard.

Salim Ali & Ripley, HB. No. 153, Vol. 1 : 252.

Status : Winter visitor, very rare.

Distribution : Seen perched sluggishly on tree tops during winter months.

Genus : **Butastur** Hodgson

55. **Butastur teesa** (Franklin), White-eyed Buzzard Eagle.

Salim Ali & Ripley, HB. No. 157, Vol. 1 : 257.

Status : Resident, very rare.

Distribution : Observed twice in two years near Fulai road on the top of a dried tree.

Genus : **Spizaetus** Vieillot

56. **Spizaetus nipalensis nipalensis** (Hodgson), Hodgson's or Feathertoed Hawk-Eagle.

Salim Ali & Ripley, HB. No. 158, Vol. 1 : 259.

Status : Resident, very rare.

Distribution : At the edge of dense forest throughout the Park.

57. *Spizaetus cirrhatus linnaeatus* (Horsfield), Changeable Hawk-Eagle.

Salim Ali & Ripley, HB. No. 160, Vol. 1 : 261.

Status : Resident, very rare.

Distribution : Open semi-evergreen forest of the Park.

Genus : *Hieraaetus* Kaup

58. *Hieraaetus fasciatus fasciatus* (Vieillot). Bonelli's or Slender Hawk-Eagle.

Salim Ali & Ripley, HB. No. 163, Vol. 1 : 266.

Status : Resident, very rare.

Distribution : Observed only once in three years at Sherbhujee near Dhikala while resting on a dried tree.

59. *Hieraaetus pennatus* (Gmelin), Booted Hawk-Eagle.

Salim Ali & Ripley, HB. No. 164, Vol. 1 : 268.

Status : Chiefly winter visitor, very rare.

Distribution : Outside the dense forest throughout the Park.

Genus : *Aquila* Brisson

60. *Aquila heliaca heliaca* Savigny, Imperial Eagle.

Salim Ali & Ripley, HB. No. 167, Vol. 1 : 274.

Status : Mainly winter visitor, very rare.

Distribution : Open portion of the Park. Observed perching on dried tree tops.

61. *Aquila rapax nipalensis* Hodgson, Eastern Steppe Eagle.

Salim Ali & Ripley, HB. No. 169, Vol. 1 : 278.

Status : Winter visitor, very rare.

Distribution : Open treeless part of the Park.

62. *Aquila clanga* Pallas, Greater Spotted Eagle.

Salim Ali & Ripley, HB. No. 170, Vol. 1 : 279.

Status : Resident, very rare.

Distribution : Well wooded and well watered tracts along Ram Ganga River and the Lake.

63. **Aquila pomarina hastata** (Lesson), Lesser Spotted Eagle.

Salim Ali & Ripley, HB. No. 171, Vol. 1 : 281.

Status : Resident, very rare.

Distribution : Near Ram Ganga River, Lake and marshes throughout the Park.

Genus : **Ictinaetus** Blyth

64. **Ictinaetus malayensis perniger** (Hodgson), Black Eagle.

Salim Ali & Ripley, HB. No. 172, Vol. 1 : 283.

Status : Resident, very rare.

Distribution : Observed once in two years near Kanda rest house in the month of February.

Genus : **Haliaeetus** Savigny

65. **Haliaeetus leucoryphus** (Pallas), Ringtailed or Pallas's Fishing Eagle.

Salim Ali & Ripley, HB. No. 174, Vol. 1 : 289.

Status : Resident and partly migratory, common.

Distribution : Commonly observed at the Lake and Ram Ganga River. Usually observed perching on tree tops near the Lake or on sandbanks in the river.

Genus : **Ichthyophaga** Lesson

66. **Ichthyophaga nana plumbea** (Jerdon), Himalayan Greyheaded Fishing Eagle.

Salim Ali & Ripley, HB. No. 177, Vol. 1 : 294.

Status : Resident, common.

Distribution : Near the Lake and Ram Ganga River. Commonly observed resting on tree tops or on sandbanks near river.

Genus : **Sarcogyps** Lesson

67. **Sarcogyps calvus** (Scopoli), Black or King Vulture.

Salim Ali & Ripley, HB. No. 178, Vol. 1 : 296.

Status : Resident, common.

Distribution : Common throughout the Park. Usually observed near the kills of carnivores.

Genus : **Aegyptius** Savigny

68. **Aegyptius monachus** (Linnaeus), Cinereous Vulture

Salim Ali & Ripley, HB. No. 179, Vol. 1 : 298.

Status : Sparse winter visitor, very rare.

Distribution : Observed once only in two years.

Genus : **Gyps** Savigny

69. **Gyps fulvus fulvescens** Hume, Indian Griffon Vulture.

Salim Ali & Ripley, HB. No. 180, Vol. 1 : 301.

Status : Resident, common.

Distribution : Throughout the Park. Usually observed near the kills of carnivores.

70. **Gyps himalayensis** Hume, Himalayan Griffon Vulture.

Salim Ali & Ripley, HB. No. 181, Vol. 1 : 302.

Status : Altitudinal migrant, very rare.

Distribution : Throughout the Park.

71. **Gyps indicus tenuirostris** G. R. Gray, Himalayan longbilled Vulture.

Salim Ali & Ripley, HB. No. 184, Vol. 1 : 306.

Status : Resident, common.

Distribution : Throughout the Park near the kills of carnivores.

72. **Gyps bengalensis** (Gmelin), Indian Whitebacked Vulture

Salim Ali and Ripley, H.B. No. 185, Vol. 1 : 307.

Status : Resident, common.

Distribution : Throughout the Park near the kills of carnivores.

Genus : **Neophron** Savigny

73. **Neophron percnopterus ginginianus** (Latham), Indian Scavenger Vulture.

Salim Ali and Ripley, H.B. No. 187, Vol. 1 : 312.

Status : Resident, rare.

Distribution : Throughout the Park.

Genus : **Gypaetus** Storn74. **Gypaetus barbatus aureus** (Hablizl), Himalayan Bearded Vulture
or Lammergeier.

Salim Ali and Ripley, H.B. No. 188, Vol. 1 : 314.

Status : Altitudinal migrant, very rare.

Distribution : Observed once in two years. Three individuals were observed flying near Thandi Sarak.

Genus : **Circus** Lacépède75. **Circus cyaneus cyaneus** (Linnaeus), Hen Harrier.

Salim Ali and Ripley, H.B. No. 189, Vol. 1 : 317.

Status : Uncommon winter visitor.

Distribution : Throughout the Park in open undulating plains.

76. **Circus macrourus** (S. G. Gmelin), Pale Harrier.

Salim Ali and Ripley, H.B. No. 190, Vol. 1 : 319.

Status : Common winter visitor.

Distribution : Throughout the Park near the edge of dense forest and grassy patches.

77. **Circus pygargus** (Linnaeus), Montagu's Harrier.

Salim Ali and Ripley, H.B. No. 191, Vol. 1 : 321.

Status : Winter visitor, very rare.

Distribution : Throughout the Park near the edge of dense forest and open grassy patches.

78. **Circus aeruginosus aeruginosus** (Linnaeus), Marsh Harrier.

Salim Ali and Ripley, H.B. No. 193, Vol. 1 : 324.

Status : Winter visitor, very rare.

Distribution : Throughout the Park near the Lake, marshes and river.

Genus : **Circaetus** Vieillot79. **Circaetus gallicus gallicus** (Gmelin), Short-toed Eagle.

Salim Ali and Ripley, H.B. No. 195, Vol. 1 : 327.

Status : Resident, very rare.

Distribution : Throughout the Park in open chaur, deciduous scrub and near the edge of dense forest.

Genus : **Spilornis** G. R. Gray

80. **Spilornis cheela cheela** (Latham), Crested Serpent Eagle.

Salim Ali and Ripley, H.B. No. 196, Vol. 1 : 329.

Status : Resident subject to some local movements, rare.

Distribution : Observed throughout the Park near well wooded streams and the edge of dense forest.

Genus : **Pandion** Savigny

81. **Pandion haliaetus haliaetus** (Linnaeus), Osprey.

Salim Ali and Ripley, H.B. No. 203, Vol. 1 : 236.

Status : Mainly winter visitor, very rare.

Distribution : Near the Lake and Ram Ganga river, on the top of dried trees near or inside the water.

Family : FALCONIDAE
(Falcons)

Genus : **Microhierax** Sharpe

82. **Microhierax caerulescens caerulescens** (Linnaeus), Himalayan Redbreasted Falconet.

Salim Ali and Ripley, H.B. No. 204, Vol. 1 : 338.

Status : Resident, very rare.

Distribution : Throughout the Park in dense forest on the top of tall trees.

Genus : **Falco** Linnaeus

83. **Falco biarmicus jugger** J. E. Gray, Laggar Falcon.

Salim Ali & Ripley, HB. No. 208, Vol. 1 : 344.

Status : Resident, very rare.

Distribution : Throughout the Park in dry open places and thin jungles.

84. **Falco peregrinus japonensis** Gmelin, Eastern Peregrine Falcon.

Salim Ali & Ripley, HB. No. 209, Vol. 1 : 347.

Status : Winter visitor, very rare.

Distribution : Throughout the Park.

85. **Falco peregrinus bebylonicus** P. L. Sclater, Redcapped or Barbary Falcon.

Salim Ali & Ripley, HB. No. 210, Vol. 1 : 349.

Status : Winter visitor, very rare.

Distribution : Throughout the Park.

86. **Falco subbuteo centralasiae** (Buturlin), Central Asian Hobby.

Salim Ali & Ripley, HB. No. 213, Vol. 1 : 353.

Status : Partly resident in Himalayas, very rare.

Distribution : Throughout the Park, prefers low-lying swampy ground in wooded tracts.

87. **Falco severus rufipedoides** Hodgson, Indian Hobby.

Salim Ali & Ripley, HB. No. 214, Vol. 1 : 355.

Status : Resident, very rare.

Distribution : Throughout the Park, prefers well wooded foot hills.

88. **Falco chicquera chicquera** Daudin, Redheaded Merlin.

Salim Ali & Ripley, HB. No. 219, Vol. 1 : 359.

Status : Resident, very rare.

Distribution : Throughout the Park.

89. **Falco vespertinus amurensis** Radde, Eastern Redlegged Falcon.

Salim Ali & Ripley, HB. No. 220, Vol. 1 : 361.

Status : Passage migrant, very rare.

Distribution : Observed once in two years continuously for three days near Sal-buji in Dhikala east chaur. Flock of approximately 300 individuals was observed resting on the top of Sal trees.

90. **Falco tinnunculus tinnunculus** Linnaeus, European Kestrel.

Salim Ali & Ripley, HB. No. 222, Vol. 1 : 365.

Status : Winter visitor, very rare.

Distribution : Observed once in two years near Shair-buji-dhang in Dhikala Chaur.

91. **Falco tinnunculus objurgatus** (Baker), Indian Kestrel.

Salim Ali & Ripley, HB. No. 224, Vol. 1 : 368.

Status : Winter visitor, very rare.

Distribution : Observed thrice in two years. Effects open grasslands.

Order : GALLIFORMES
Family : PHASIANIDAE
(Pheasants, Partridges, Quails)
Genus : **Francolinus** Stephens

92. **Francolinus francolinus asiae** Bonaparte, Indian Black Partridge

Salim Ali & Ripley, HB. No. 238, Vol. 2 : 22.

Status : Resident, very common.

Distribution : Very common in Dhikala Chaur. Common throughout the Park in grassy patches.

93. **Francolinus pondicerianus interpositus** Hartert, North Indian Grey Partridge.

Salim Ali & Ripley, HB. No. 245, Vol. 2 : 30.

Status : Resident, very rare.

Distribution : Throughout the Park in dry open grassy patches.

Genus : **Coturnix** Bonnaterre

94. **Coturnix coturnix coturnix** (Linnaeus), Grey Quail.

Salim Ali & Ripley, HB. No. 250, Vol. 2 : 37.

Status : Partly resident, very rare.

Distribution : Throughout the Park in grasslands.

95. **Coturnix coromandelica** (Gmelin), Blackbreasted or Rain Quail.

Salim Ali & Ripley, HB. No. 252, Vol. 2 : 41.

Status : Resident and locally migratory, very rare.

Distribution : Throughout the Park in open moist grasslands.

Genus : **Perdica** Hodgson

96. **Perdica asiatica punjaubi** Whistler, Punjab jungle Bush Quail.

Salim Ali & Ripley, HB. No. 256, Vol. 2 : 47.

Status : Resident, common.

Distribution : Throughout the Park in open grasslands.

Genus : **Lophura** Fleming

97. **Lophura leucomelana hamiltonii** (J. E. Gray), Whitecrested Kaleej Pheasant.

Salim Ali & Ripley, HB. No. 293, Vol. 2 : 94.

Status : Resident, common.

Distribution : Commonly observed in Sal forest throughout the Park. Usually in heavy scrub and Lantana bushes near water.

Genus : **Gallus** Brisson

98. **Gallus gallus murghi** Robinson & Kloss, Indian Red Junglefowl.

Salim Ali & Ripley, HB. No. 299, Vol. 2 : 102.

Status : Resident, very common.

Distribution : Very common throughout the Park in moist deciduous forest and bamboo jungle.

Genus : **Pavo** Linnaeus

99. **Pavo cristatus** Linnaeus, Indian Peafowl.

Salim Ali & Ripley, HB. No. 311, Vol. 2 : 123.

Status : Resident, very common.

Distribution : Observed throughout the Park. Very common near Bijrani.

Order : GRUIFORMES

Family : TURNICIDAE
(Bustard-Quails)

Genus : **Turnix** Bonnaterre

100. **Turnix suscitator taigoor** (Sykes), Indian Bustard-Quail.

Salim Ali & Ripley, HB. No. 318, Vol. 2 : 133.

Status : Resident, very rare.

Distribution : Throughout the Park. Prefers grassland, scrub jungle and open forests.

Family : RALLIDAE
(Rails, Coots)

Genus : **Rallus** Linnaeus

101. **Rallus stratus albiventer** Swainson, Indian Bluebreasted Banded Rail.

Salim Ali & Ripley, HB. No. 329, Vol. 2 : 152.

Status : Resident, very rare.

Distribution : Observed once in two years near Khinnannuli road at the bank of river.

Genus : **Amaurornis** Reichenbach

102. **Amaurornis phoenicurus chinensis** (Boddaert), Chinese White-breasted Waterhen.

Salim Ali & Ripley, HB. No. 348, Vol. 2 : 168.

Status : Resident, Common.

Distribution : Throughout the Park near reedy marshland, Lake and river.

Genus : **Gallinula** Brisson

103. **Gallinula chloropus indica** Blyth, Indian Moorhen.

Salim Ali & Ripley, HB. No. 347, Vol. 2 : 175.

Status : Resident and partly winter visitor, common.

Distribution : Near the Lake and Ram Ganga river.

Genus : **Porphyrio** Brisson

104. **Porphyrio porphyrio poliocephalus** (Latham), Indian Purple Moorhen.

Salim Ali & Ripley, HB. No. 349, Vol. 2 : 178.

Status : Resident, very rare.

Distribution : Lake in reed-beds, and swamps.

Genus : **Fulica** Linnaeus

105. **Fulica atra atra** Linnaeus, Coot.

Salim Ali and Ripley, H.B. No. 350, Vol. 2 : 180.

Status : Resident as well as winter visitor, very rare.

Distribution : Lake and river.

Order : CHARADRIIFORMES

Family : JACANIDAE
(Jacanas)

Genus : **Hydrophasianus** Wagler

106. **Hydrophasianus chirurgus** (Scopoli), Pheasant-tailed Jacana.

Salim Ali and Ripley, H.B. No. 358, Vol. 2 : 199.

Status : Resident, moving locally with conditions of flood and drought, very rare.

Distribution : Lake and river.

Family : CHARADRIIDAE
(Plovers, Sandpipers, Snipe)

Genus : **Vanellus** Brisson

107. **Vanellus indicus indicus** (Boddaert), Redwattled Lapwing

Salim Ali and Ripley, H.B. No. 366, Vol. 2 : 212.

Status : Resident, very common.

Distribution : Throughout the Park, very common near the Lake at Dhikala and Paterpani.

108. **Vanellus spinosus duvaucelii** (Lesson), Spurwinged Lapwing.

Salim Ali and Ripley, H.B. No. 369, Vol. 2 : 216.

Status : Resident with seasonal movements, very common.

Distribution : Near the Lake and Ram Gange River.

Genus : **Charadrius** Linnaeus

109. **Charadrius dubius jerdoni** (Legge), Indian Little Ringed Plover.

Salim Ali and Ripley, H.B. No. 380, Vol. 2 : 231.

Status : Winter visitor, very common.

Distribution : Along the Lake and river.

110. **Charadrius alexandrinus alexandrinus** Linnaeus, Kentish Plover.

Salim Ali and Ripley, H.B. No. 381, Vol. 2 : 235.

Status : Winter visitor, very rare.

Distribution : Along the Lake and river.

Genus : **Numenius** Brisson

111. **Numenius arquata orientalis** C. L. Brehm, Eastern Curlew.

Salim Ali and Ripley, H.B. No. 388, Vol. 2 : 246.

Status : Winter visitor, very rare.

Distribution : Along the Lake and river.

Genus : **Limosa** Brisson

112. **Limosa limosa limosa** (Linnaeus), Blacktailed Godwit.

Salim Ali and Ripley, H.B. No. 389, Vol. 2 : 249.

Status : Winter visitor, very rare.

Distribution : Near the Lake.

Genus : **Tringa** Linnaeus

113. **Tringa totanus eurhinus** (Oberholser), Eastern Redshank.

Salim Ali and Ripley, H.B. No. 394, Vol. 2 : 257.

Status : Winter visitor, rare.

Distribution : Along the Lake and river.

114. **Tringa nebularia** (Gunnerus), Greenshank.

Salim Ali and Ripley, H.B. No. 396, Vol. 2 : 261.

Status : Winter visitor, rare.

Distribution : Along the Lake and river.

115. **Tringa ochropus** Linnaeus, Green Sandpiper.

Salim Ali and Ripley, H.B. No. 397, Vol. 2 : 263.

Status : Winter visitor, common.

Distribution : Along the Lake and river.

116. **Tringa glareola** Linnaeus, Wood or Spotted Sandpiper.

Salim Ali and Ripley, H.B. No. 398, Vol. 2 : 265.

Status : Winter visitor, common.

Distribution : Along the Lake and river.

117. **Tringa hypoleucos** Linnaeus, Common Sandpiper.

Salim Ali and Ripley, H.B. No. 401, Vol. 2 : 271.

Status : Winter visitor, common.

Distribution : Along the Lake and river.

Genus : **Capella** Frenzel

118. **Capella gallinago gallinago** (Linnaeus), Common or Fantail Snipe.

Salim Ali and Ripley, H.B. No. 409, Vol. 2 : 287.

Status : Winter visitor, very rare.

Distribution : Marshes near the Lake and river.

119. **Capella minima** (Brünnich), Jack Snipe.

Salim Ali and Ripley, H.B. No. 410, Vol. 2 : 290.

Status : Irregular winter visitor, very rare.

Distribution : Marshes near the Lake and river.

Genus : **Calidris** Merrem

120. **Calidris minutus** (Leisler), Little Stint.

Salim Ali and Ripley, H.B. No. 416, Vol. 2 : 301.

Status : Passage migrant (winter), very rare.

Distribution : Marshes near the Lake and river.

Family : ROSTRATULIDAE
(Painted Snipe)

Genus : **Rostratula** Vieillot

121. **Rostratula benghalensis benghalensis** (Linnaeus), Painted Snipe.

Salim Ali and Ripley, H.B. No. 429, Vol. 2 : 325.

Status : Resident, very rare.

Distribution : Marshes, near the Lake and river.

Family : RECURVIROSTRIDAE
(Avocet, Stilts, Ibisbill)

Genus : **Himantopus** Brisson

122. **Himantopus himantopus himantopus** (Linnaeus), Indian Blackwinged Stilt.

Salim Ali and Ripley, H.B. No. 430, Vol. 2 : 329.

Status : Local migrant, common.

Distribution : Throughout the Park near marshes, Lake and river.

Genus : **Recurvirostra** Linnaeus

123. **Recurvirostra avosetta** Linnaeus, Avocet.

Salim Ali and Ripley, H.B. No. 432, Vol. 2 : 332.

Status : Occasional winter visitor, very rare,

Distribution : Flocks upto 40 individuals were observed near the Lake, twice.

Genus : **Ibidorhyncha** Vigors

124. **Ibidorhyncha struthersii** Vigors, Ibisbill.

Salim Ali and Ripley, H.B. No. 433, Vol. 2 : 334.

Status : Very rare.

Distribution : Near Ram Ganga River.

Family : BURHINIDAE
(Stone curlews)

Genus : **Burhinus** Illiger

125. **Burhinus oedicnemus indicus** (Salvadori), Indian Stone Curlew.

Salim Ali and Ripley, H.B. No. 436, Vol. 3 : 2.

Status : Resident with local movements, very rare,

Distribution : Throughout the Park near stony hillsides, light forest and banks of Ram Ganga.

Genus : **Esacus** Lesson

126. **Esacus magnirostris recurvirostris** (Cuvier), Great Stone Plover.

Salim Ali and Ripley, H.B. No. 437, Vol. 3 : 5.

Status : Resident with local movements, common.

Distribution : Near the Lake and river bed.

Family : GLAREOLIDAE
(Coursers, Courier Plovers Pratincoles)

Genus : **Glareola** Brisson

127. **Glareola lactea** Temminck, Small Indian Pratincole or Swallow-Plover.

Salim Ali and Ripley, H.B. No. 444, Vol. 3 : 15.

Status : Resident with local movements, very rare.

Distribution : Along the Lake and river.

Family : LARIDAE
(Gulls, Terns)

Genus : **Larus** Linnaeus

128. **Larus fuscus fuscus** Linnaeus, Lesser Blackbacked Gull.

Salim Ali and Ripley, H.B. No. 452, Vol. 3 : 28.

Status : Winter visitor, common.

Distribution : Lake and river.

129. **Larus ichthyaetus** Pallas, Great Blackheaded Gull.

Salim Ali and Ripley, H.B. No. 453, Vol. 3 : 29.

Status : Winter visitor, very common.

Distribution : Lake and river.

130. **Larus brunnicephalus** Jerdon, Brownheaded Gull.

Salim Ali and Ripley, H.B. No. 454, Vol. 3 : 31.

Status : Passage migrant, rare.

Distribution : Lake and river.

Genus : **Chlidonias** Rafinesque

131. **Chlidonias hybrida indica** (Stephens), Indian Whiskered Tern.

Salim Ali and Ripley, H.B. No. 458, Vol. 3 : 39.

Status : Visitor, very rare.

Distribution : Along the Lake and river.

Genus : **Sterna** Linnaeus

132. **Sterna aurantia** J. E. Gray, Indian River Tern.

Salim Ali and Ripley, H.B. No. 468, Vol. 3 : 48.

Status : Resident, very rare.

Distribution : Along the Lake and river.

Order : COLUMBIFORMES

Family : COLUMBIDAE
(Pigeons, Doves)

Genus : **Treron** Vieillot

133. **Treron apicauda apicauda** Blyth, Pintailed Green Pigeon.

Salim Ali and Ripley, H.B. No. 498, Vol. 3 : 94.

Status : Resident and locally nomadic, very rare.

Distribution : Throughout the Park in mixed Sal forest.

134. **Treron sphenura sphenura** (Vigors), Kokla or Wedgetailed Green Pigeon.

Salim Ali and Ripley, H.B. No. 494, Vol. 3 : 96.

Status : Resident and locally migrant, very rare.

Distribution : Observed twice in two years near Paterpani.

135. **Treron bicincta bicincta** (Jerdon), Indian Orangebreasted Green Pigeon.

Salim Ali and Ripley, H.B. No. 501, Vol. 3 : 104.

Status : Resident with local movements, common.

Distribution : Commonly observed throughout the Park at the edge of dense forest from April to August.

136. *Treron phoenicoptera phoenicoptera* (Latham), Bengal Green Pigeon.

Salim Ali and Ripley, H.B. No. 503, Vol. 3 : 106.

Status : Resident with local movements, common.

Distribution : Throughout the Park near the edge of dense forests in tall trees. Observed commonly near Thandi Sarak, Paterpani and Khananuli.

Genus : **Columba** Whistler

137. *Columba livia intermedia* Strickland, Indian Blue Rock Pigeon.

Salim Ali and Ripley, H.B. No. 517, Vol. 3 : 125.

Status : Seasonal altitudinal migrant, very common.

Distribution : Throughout the Park in rocky areas.

Genus : **Streptopelia** Bonaparte.

138. *Streptopelia orientalis meena* (Sykes), Western Turtle-Dove.

Salim Ali and Ripley, H.B. No. 531, Vol. 3 : 143.

Status : Resident, rare.

Distribution : Throughout the Park in open, mixed deciduous and bamboo forests.

139. *Streptopelia decaocto decaocto* (Frivaldszky), Indian Ring Dove.

Salim Ali and Ripley, H.B. No. 534, Vol. 3 : 147.

Status : Resident, common.

Distribution : Throughout the Park.

140. *Streptopelia tranquebarica tranquebarica* (Hermann), Indian Red Turtle-Dove.

Salim Ali and Ripley, H.B. No. 535, Vol. 3 : 149.

Status : Subject to local migrations, rare.

Distribution : Observed during summer months near Dhikala, Paterpani and Khananuli on the road and in trees.

141. *Streptopelia chinensis suratensis* (Gmelin), Indian Spotted Dove.

Salim Ali and Ripley, H.B. No. 437, Vol. 3 : 152.

Status : Resident, common.

Distribution : Common throughout the Park.

142. *Streptopelia senegalensis cambayensis* (Gmelin), Indian Little Brown or Senegal Dove.

Salim Ali and Ripley, H.B. No. 541, Vol. 3 : 155.

Status : Resident, rare.

Distribution : Observed near Dhikala and Paterpani during summer months from April to June.

Genus : **Chalcophaps** Gould

143. *Chalcophaps indica indica* (Linnaeus), Indian Emerald Dove.

Salim Ali and Ripley, H.B. No. 542, Vol. 3 : 157.

Status : Resident, common.

Distribution : Commonly observed throughout the Park in dense forest patches.

Order : PSITTACIFORMES

Family : PSITTACIDAE
(Parrots)

Genus : **Psittacula** Cuvier

144. *Psittacula eupatria nipalensis* (Hodgson), Large Indian Parakeet.

Salim Ali and Ripley, H.B. No. 545, Vol. 3 : 164.

Status : Resident subject to local movements, common.

Distribution : Commonly observed throughout the Park.

145. *Psittacula krameri borealis* (Neumann), Northern Roseringed Parakeet.

Salim Ali and Ripley, H.B. No. 549, Vol. 3 : 169.

Status : Resident, abundant.

Distribution : Very common throughout the Park. Roost of 3,000 to 6,000 were observed near Mota Sal (Nebu buji) during summer.

146. *Psittacula alexandri fasciata* (P. L. S. Müller), Indian Redbreasted Parakeet.

Salim Ali and Ripley, H.B. No. 551, Vol. 3 : 172.

Status : Resident with local movements, very rare.

Distribution : Observed once in two years. A flock of 11 individuals was observed near Khinanuli rest house.

147. *Psittacula cyanocephala bengalensis* (Forster), Northern Blossom-headed Parakeet.

Salim Ali and Ripley, H.B. No. 557, Vol. 3 : 178.

Status : Resident with local movements, common.

Distribution : Throughout the Park in moist deciduous forest. Roosts of 500 to 1,000 individuals were observed between April and June.

148. *Psittacula himalayana* (Lesson) Himalayan Slatyheaded Parakeet.

Salim Ali and Ripley, H.B. No. 568, Vol. 3 : 188.

Status : Altitudinal migrant, rare.

Distribution : Flocks of 15 to 175 individuals were observed near Dhikala and Khinanuli.

Order : CUCULIFORMES

Family : CUCULIDAE
(Cuckoos)

Genus : ***Clamator*** Kaup

149. *Clamator coromandus* (Linnaeus), Redwinged Crested Cuckoo.

Salim Ali and Ripley, H.B. No. 569, Vol. 3 : 192.

Status : Resident, very rare.

Distribution : Throughout the Park in moist deciduous, foothill forest, scrub and bush jungle.

150. *Clamator jacobinus serratus* (Sparrman), Pied Crested Cuckoo.

Salim Ali and Ripley, H.B. No. 570, Vol. 3 : 194.

Status : Monsoon visitor, rare.

Distribution : Throughout the Park.

Genus : ***Cuculus*** Linnaeus

151. *Cuculus sparveroides sparveroides* Vigors, Large Hawk-Cuckoo.

Salim Ali and Ripley, H.B. No. 572, Vol. 3 : 198.

Status : Resident in Himalayas, very rare.

Distribution : Throughout the Park, prefers wooded hillsides and valleys.

152. *Cuculus varius varius* Vahl. Common Hawk-Cuckoo or Brain-fever Bird.

Salim Ali and Ripley, H.B. No. 573, Vol. 3 : 200.

Status : Resident, common.

Distribution : Heard and seen throughout the Park in dense forest from April to September.

153. *Cuculus micropterus micropterus* Gould, Indian Cuckoo.

Salim Ali and Ripley, H.B. No. 576, Vol. 3 : 204.

Status : Resident and seasonal visitor, common.

Distribution : Throughout the Park. Commonly heard and seen at dawn and dusk at the edge of dense forest.

154. *Cuculus canorus canorus* Linnaeus, Cuckoo.

Salim Ali and Ripley, H.B. No. 578, Vol. 3 : 208.

Status : Resident and seasonal local migrant, very rare.

Distribution : Throughout the Park in well wooded places.

155. *Cuculus saturatus saturatus* Blyth, Himalayan Cuckoo.

Salim Ali and Ripley, H.B. No. 580, Vol. 3 : 211.

Status : Resident, very rare.

Distribution : Throughout the Park in dense and moist forest.

156. *Cuculus poliocephalus poliocephalus* Latham, Small Cuckoo.

Salim Ali and Ripley, H.B. No. 581, Vol. 3 : 213.

Status : Resident, very rare.

Distribution : Throughout the Park in dense and moist forest.

Genus : *Cacomantis* Müller

157. *Cacomantis merulinus passerinus* (Vahl), Indian Plaintive Cuckoo.

Salim Ali and Ripley, H.B. No. 584, Vol. 3 : 218.

Status : Resident as well as local migrant, very rare.

Distribution : Throughout the Park in light open forest.

Genus : *Surniculus* Lesson

158. *Surniculus lugubris dicruroides* (Hodgson), Indian Drongo-Cuckoo.

Salim Ali and Ripley, H.B. No. 588, Vol. 3 : 224.

Status ; Resident, rare.

Distribution : Throughout the Park in open secondary forests, in bushes and exposed branches of trees.

Genus : **Eudynamys** Vigors & Horsfield

159. **Eudynamys scolopacea scolopacea** (Linnaeus), Indian Koel.

Salim Ali and Ripley, H.B. No. 590, Vol. 3 : 227.

Status : Resident and local migrant, rare.

Distribution : Observed during summer near Dhikala, Paterpani and Sarapduli.

Genus : **Rhopodytes** Cabanis & Heine

160. **Rhopodytes tristis tristis** (Lesson), Large Greenbilled Malkoha.

Salim Ali and Ripley, H.B. No. 593, Vol. 3 : 231.

Status : Resident, very rare.

Distribution : Observed twice in two years near Dhikala.

Genus : **Centropus** Illiger

161. **Centropus sinensis sinensis** (Stephens), Common Crow-Pheasant.

Salim Ali and Ripley, H.B. No. 600, Vol. 3 : 240.

Status : Resident, common.

Distribution : Throughout the Park. Conspicuous during summer months in long grasses and near river.

Order : STRIGIFORMES

Family : STRIGIDAE
(Barn Owls and Owls)

Genus : **Tyto** Billberg

162. **Tyto alba stertens** Hartert, Indian Barn Owl.

Salim Ali and Ripley, H.B. No. 606, Vol. 3 : 250.

Status : Resident, very rare.

Distribution : Observed once in two years near Dhikala.

Genus : **Otus** Pennant

163. **Otus scops sunia** (Hodgson), North Indian Scops Owl.

Salim Ali and Ripley, H.B. No. 616, Vol. 3 : 262.

Status : Resident, very rare.

Distribution : Throughout the Park in deciduous and densely foliated trees.

Genus : **Bubo** Dumeril164. **Bubo bubo bengalensis** (Franklin), Indian Horned or Eagle-Owl.

Salim Ali and Ripley, H.B. No. 627, Vol. 3 : 273.

Status : Resident, very rare.

Distribution : Throughout the Park. Observed thrice in two years perching in a tree near Dhikala, Khinanuli and Fulai road.

165. **Bubo nipalensis nipalensis** Hodgson, Forest Eagle-Owl.

Salim Ali and Ripley, H.B. No. 628, Vol. 3 : 276.

Status : Resident, very rare.

Distribution : Throughout the Park in dense forest.

166. **Bubo coromandus coromandus** (Latham), Dusky Horned Owl.

Salim Ali and Ripley, H.B. No. 630, Vol. 3 : 278.

Status : Resident, very rare.

Distribution : Throughout the Park. Entirely nocturnal.

167. **Bubo zeylonensis leschenaulti** (Temminck), Fish Owl.

Salim Ali and Ripley, H.B. No. 631, Vol. 3 : 280.

Status : Resident, very rare.

Distribution : Throughout the Park. Affects well wooded and well watered places.

168. **Bubo flavipes** (Hodgson), Tawny Fish Owl.

Salim Ali and Ripley, H.B. No. 633, Vol. 3 : 283.

Status : Resident, very rare.

Distribution : Throughout the Park in forested banks of river, and streams.

Genus : **Glaucidium** Boie169. **Glaucidium brodiei** (Burton), Collared Pygmy Owlet.

Salim Ali and Ripley, H.B. No. 635, Vol. 3 : 285.

Status : Resident, very rare.

Distribution : Throughout the Park in open forest.

170. **Glaucidium radiatum** (Tickell), Barred Jungle Owlet.

Salim Ali and Ripley, H.B. No. 636, Vol. 3 : 286.

Status : Resident, very rare.

Distribution : Throughout the Park. Affects mixed moist deciduous forest.

171. **Glaucidium cuculoides cuculoides** (Vigors), West Himalayan, Barred Owlet.

Salim Ali and Ripley, H.B. No. 639, Vol. 3 : 289.

Status : Seasonal altitudinal migrant, very rare.

Distribution : Throughout the Park in open forest.

Genus : **Ninox** Hodgson

172. **Ninox scutulata lugubris** (Tickell), Indian Brown Hawk-Owl.

Salim Ali and Ripley, H.B. No. 642, Vol. 3 : 292.

Status : Resident, very rare.

Distribution : Throughout the Park in well wooded places, grooves of trees near water and forest streams.

Genus ; **Athene** Boie

173. **Athene brama indica** (Franklin), Northern Spotted Owlet.

Salim Ali and Ripley, H.B. No. 650, Vol. 3 : 299.

Status : Resident, common.

Distribution : Throughout the Park in open forest. Usually observed resting in trees.

Genus : **Strix** Linnaeus

174. **Strix leptogrammica newarensis** (Hodgson), Himalayan Brown Wood Owl.

Salim Ali and Ripley, H.B. No. 658, Vol. 3 : 307.

Status : Resident, very rare.

Distribution : Observed twice in two years in deep forest.

175. **Strix aluco nivicola** (Blyth), Himalayan Wood Owl.

Salim Ali and Ripley, H.B. No. 662, Vol. 3 : 311.

Status : Altitudinal migrant, very rare.

Distribution : Throughout the Park. Affects wooded areas of dense forest.

Genus : **Asio** Brisson176. **Asio flammeus flammeus** (Pontoppidan), Shorteared Owl.

Salim Ali and Ripley, H.B. No. 664, Vol. 3 : 314.

Status : Winter visitor, very rare.

Distribution : Throughout the Park.

Order : CAPRIMULGIFORMES

Family : CAPRIMULGIDAE
(Nightjars)Genus : **Caprimulgus** Linnaeus177. **Caprimulgus indicus hazarae** Whistler & Kinnear, Himalayan
Jungle Nightjar.

Salim Ali and Ripley, H.B. No. 670, Vol. 4 : 8.

Status : Resident and altitudinal migrant, very common.

Distribution : Throughout the Park on roads and electric poles.

178. **Caprimulgus indicus indicus** Latham, Indian Jungle Nightjar.

Salim Ali and Ripley, H.B. No. 671, Vol. 4 : 10.

Status : Resident with local migration, common.

Distribution : Common throughout the Park.

179. **Caprimulgus macrurus albonotatus** Tickell, Indian Longtailed
Nightjar.

Salim Ali and Ripley, H.B. No. 675, Vol. 4 : 16.

Status : Resident and partially migratory, very rare.

Distribution : Throughout the Park in moist-deciduous forest of Sal.

Genus : **Chaetura** Stephens180. **Chaetura sylvatica** (Tickell), Whiterumped Spinetail Swift.

Salim Ali and Ripley, H.B. No. 692, Vol. 4 : 37.

Status : Resident, common.

Distribution : Throughout the Park on electric wires, over the Lake and Ram Ganga river.

Genus : **Apus** Scopoli181. **Apus melba nubifuga** Koelz, Indian Alpine Swift.

Salim Ali and Ripley, H.B. No. 694, Vol. 4 : 40.

Status : Resident subject to seasonal local migration, common.

Distribution : Throughout the Park. Common during summer months.

182. ***Apus pacificus leuconyx*** (Blyth), Blyth's or Himalayan White-rumped Swift.

Salim Ali and Ripley, H.B. No. 700, Vol. 4 : 49.

Status : Resident, Common.

Distribution : Throughout the Park during summer and rainy season.

183. ***Apus affinis affinis*** (J.E. Gray), Indian House Swift.

Salim Ali and Ripley, H.B. No. 703, Vol. 4 : 51.

Status : Resident, common.

Distribution : Throughout the Park. Commonly observed during summer months and in rainy season.

Genus : ***Cypsiurus*** Lesson

184. ***Cypsiurus parvus battasiensis*** (J. E. Gray), Indian Palm Swift.

Salim Ali and Ripley, H.B. No. 707, Vol. 4 : 56.

Status : Resident, very rare.

Distribution : Throughout the Park in open jungles and grasslands.

Genus : ***Hemiprocne*** Nitzsch

185. ***Hemiprocne longipennis coronata*** (Tickell), Crested Tree Swift.

Salim Ali and Ripley, H.B. No. 709, Vol. 4 : 58.

Status : Resident, common.

Distribution : Common throughout the Park. Affects wooded areas of deciduous forest.

Order : CORACIFORMES

Family : ***ALCEDINIDAE***
(Kingfishers)

Genus : ***Ceryle*** Boie

186. ***Ceryle lugubris continentalis*** Hartert, West Himalayan Pied Kingfisher.

Salim Ali and Ripley, H.B. No. 717, Vol. 4 : 68.

Status : Resident, common.

Distribution : Along the Lake and river. Very common at Sarpduli.

187. *Ceryle rudis leucomelanura* Reichenmbach, Indian Pied Kingfisher.

Salim Ali and Ripley, H.B. No. 719, Vol. 4 : 71.

Status : Resident, common.

Distribution : Along the Lake and river.

Genus : **Alcedo** Linnaeus

188. *Alcedo atthis bengalensis* Gmelin, Indian Small Blue Kingfisher.

Salim Ali and Ripley, H.B. No. 723, Vol. 4 : 76.

Status : Resident, common.

Distribution : Along the Lake and river.

Genus : **Pelargopsis** Gloger

189. *Pelargopsis capensis capensis* (Linnaeus), Brownheaded Storkbilled Kingfisher.

Salim Ali and Ripley, H.B. No. 730, Vol. 4 : 84.

Status : Resident, rare.

Distribution : Along the Lake and river.

Genus : **Halcyon** Swainson

190. *Halcyon smyrnensis fusca* (Boddaert), Indian Whitebreasted Kingfisher.

Salim Ali and Ripley, H.B. No. 736, Vol. 4 : 90.

Status : Resident, common.

Distribution : Along the Lake and river.

Family : MEROPIDAE
(Bee-eaters)

Genus : **Merops** Linnaeus

191. *Merops leschenaulti leschenaulti* Vieillot, Chestnutheaded Bee-eater.

Salim Ali and Ripley, H.B. No. 744, Vol. 4 : 99.

Status : Resident, local migrant, common.

Distribution : Throughout the Park. Common from April to June.

192. *Merops philippinus philippinus* Linnaeus, Bluetailed Bee-eater.

Salim Ali and Ripley, H.B. No. 748, Vol. 4 : 106.

Status : Resident and locally migratory, very common.

Distribution : Throughout the Park. Very common from April to June in open grasslands. Flocks of 200 to 300 individuals can be seen during summer months in Dhikala surroundings.

193. **Merops orientalis orientalis** Latham, Indian Small Green Bee-eater.

Salim Ali and Ripley, H.B. No. 750, Vol. 4 ; 109.

Status : Resident, with seasonal local movements. Very common.

Distribution : Throughout the Park. Very common in Dhikala surroundings from April to August.

Genus : **Nyctyornis** Jardine & Selby

194. **Nyctyornis athertoni athertoni** (Jardine & Selby), (Bluebearded Bee-eater.)

Salim Ali and Ripley, HB. No. 753, Vol. 4 : 112.

Status : Resident, very rare.

Distribution : Throughout the Park in moist deciduous forest.

Family : CORACIIDAE : Rollers or Blue Jays.

Genus ; **Coracias** Linnaeus

195. **Coracias benghalensis benghalensis** (Linnaeus), Northern Roller or Blue Jay.

Salim Ali and Ripley, HB. No. 755, Vol. 4 : 116.

Status : Resident, very common.

Distribution : Throughout the Park. Affects open grasslands and light deciduous forests.

Genus : **Eurystomus** Vieillot

196. **Eurystomus orientalis cyanicollis** Vieillot, Himalayan Broadbilled Roller.

Salim Ali and Ripley, HB. No. 758 (761), Vol. 4 : 120.

Status : Resident, common.

Distribution : Throughout the Park. Affects light forest of Sal, forest clearings with scattered standing trees.

Family : UPUPIDAE
(Hoopoe)

Genus : **Upupa** Linnaeus

197. **Upupa epops epops** Linnaeus, European Hoopoe.

Salim Ali and Ripley, HB. No. 763, Vol. 4 : 124.

Status : Resident or breeding summer visitor, very rare.

Distribution : Throughout the Park in light forest, grasslands and in deciduous biotope.

198. **Upupa epops ceylonensis** Reichenbach, Ceylon Hoopoe.

Salim Ali and Ripley, HB. No. 765, Vol. 4 : 128.

Status : Resident, very common.

Distribution : Throughout the Park in open grasslands and light deciduous forest.

Family : BUCEROTIDAE : Hornbills

Genus : **Tockus** Lesson

199. **Tockus birostris** (Scopole), Grey Hornbill.

Salim Ali and Ripley, HB. No. 767, Vol. 4 : 130.

Status : Resident, rare.

Distribution : Throughout the Park in dense Sal forest with scattering of ficus trees.

Genus : **Aceros** J. E. Gray

200. **Aceros nipalensis** (Hodgson), Rufousnecked Hornbill.

Salim Ali and Ripley, HB. No. 771, Vol. 4 : 135.

Status : Resident, very rare.

Distribution : Observed once in two years at Tauli Chauki near Khinanauli. Affects dense forest.

Genus : **Anthracoceros** Richenbach

201. **Anthracoceros malabaricus malabaricus** (Gmelin), Indian Pied Hornbill.

Salim Ali and Ripley, HB. No. 774, Vol. 4 : 140.

Status : Resident subject to local movements, rare.

Distribution : Throughout the Park. Affects moist, deciduous and evergreen forests.

Genus : **Buceros** Linnaeus

202. **Buceros bicornis homrai** Hodgson, Great Pied Hornbill.

Salim Ali and Ripley, HB. No. 776, Vol. 4 : 143.

Status : Resident, subject to local movements, rare.

Distribution : Rarely observed throughout the Park in dense forest of Sal.

Order : PICIFORMES

Family : CAPITONIDAE : Barbets

Genus : *Megalaima* G. R. Gray

203. *Megalaima virens marshallorum* Swinhoe, Himalayan Great Barbet.

Salim Ali and Ripley, H.B. No. 777, Vol. 4 : 147.

Status : Resident, with seasonal altitudinal movements, rare.

Distribution : Throughout the Park in dense forest.

204. *Megalaima zeylanica caniceps* (Franklin), Northern Green Barbet.

Salim Ali and Ripley, H.B. No. 780, Vol. 4 : 150.

Status : Resident, Common.

Distribution : Commonly observed throughout the Park. Affects well-wooded moist and dry deciduous jungles.

205. *Megalaima asiatica asiatica* (Latham), Bluethroated Barbet.

Salim Ali and Ripley, H.B. No. 788, Vol. 4 : 158.

Status : Resident, rare.

Distribution : Throughout the Park in light deciduous forest and groves of ficus trees.

206. *Megalaima haemacephala indica* (Latham), Crimsonbreasted Barbet or Coppersmith.

Salim Ali and Ripley, H.B. No. 792, Vol. 4 : 163.

Status : Resident, common.

Distribution : Throughout the Park at the edge of dense forest and in groves of ficus trees.

Family : **Picidae** : Woodpeckers

Genus : **Jynx** Linnaeus

207. *Jynx torquilla torquilla* Linnaeus, European Wryneck.

Salim Ali and Ripley, H.B. No. 796, Vol. 4 : 168.

Status : Winter visitor, very rare.

Distribution : Open deciduous scrub portions of the Park.

Genus : **Sasia** Hodgson208. **Sasia ochracea ochracea** Hodgson, Himalayan Rufous Piculet.

Salim Ali and Ripley, H.B. No. 800, Vol. 4 : 175.

Status : Resident, very rare.

Distribution : Throughout the Park in Semi evergreen and deciduous forest.

Genus : **Picus** Linnaeus209. **Picus squamatus squamatus** Vigors, Himalayan Scallybellied Green Wood-pecker.

Salim Ali and Ripley, H.B. No. 807, Vol. 4 : 182.

Status : Resident with some altitudinal movements, rare.

Distribution : Open evergreen mixed forest.

210. **Picus myrmecophoneus** Stresemann, Little Scalybellied Green Woodpecker.

Salim Ali and Ripley, H.B. No. 808, Vol. 4 : 184.

Status : Resident, common.

Distribution : Throughout the Park. Affects Sal and bamboo jungles.

211. **Picus canus sanquiniceps** Baker, Indian Blacknaped Green Woodpecker.

Salim Ali and Ripley, H.B. No. 809, Vol. 4 : 186.

Status : Resident, common.

Distribution : Throughout the Park at the edge of dense Sal forest.

212. **Picus flavinucha kumaonensis** (Koelz), Kumaon Large Yellownaped Woodpecker.

Salim Ali and Ripley, H.B. No. 812, Vol. 4 : 190.

Status : Resident, rare.

Distribution : Observed near Khinanauli, Sultan and Dhikala-Paterpani road at the edge of Sal forest.

213. **Picus chlorolophus simlae** Meinertzhagen, West Himalayan Small Yellownaped Woodpecker.

Salim Ali and Ripley, H.B. No. 814, Vol. 4 : 192.

Status : Resident, very rare.

Distribution : Throughout the Park in evergreen and moist deciduous jungles.

Genus : **Dinopium** Refinesque

214. **Dinopium benghalense benghalense** (Linnaeus), Northern Golden-backed Woodpecker.

Salim Ali and Ripley, H.B. No. 819, Vol. 4 : 197.

Status : Resident, common.

Distribution : Throughout the Park in Sal forest, seen near Dhikala, Khinanauli, Paterpani and Fulai road.

215. **Dinopium shorii shorii** (Vigors), Himalayan Goldenbacked Three-toed Woodpecker.

Salim Ali and Ripley, H.B. No. 824, Vol. 4 : 202.

Status : Resident, common.

Distribution : Throughout the Park in Sal forest and bamboo jungle.

Genus : **Mulleripicus** Bonaparte

216. **Mulleripicus pulverulentus mohun** Ripley, Nepal Great Slaty Woodpecker.

Salim Ali and Ripley, H.B. No. 828, Vol. 4 : 206.

Status : Resident, very rare.

Distribution : Throughout the Park in Sal forest.

Genus : **Hypopicus** Bonaparte

217. **Hypopicus hyperythrus marshalli** (Hartert), Western Rufousbellied Woodpecker.

Salim Ali and Ripley, H.B. No. 832, Vol. 4 : 211.

Status : Altitudinal migrant, very rare.

Distribution : Occasionally observed near Dhikala (Shissam Island) and Paterpani in the month of December.

Genus : **Picoides** Lacépède

218. **Picoides himalayensis himalayensis** (Jardine & Selby), Garhwal Pied Woodpecker.

Salim Ali and Ripley, H.B. No. 837, Vol. 4 : 217.

Status : Resident, very rare.

Distribution : Throughout the Park in hill forests.

219. **Picoides macei macei** (Vieillot), Indian Fulvousbreasted pied Woodpecker.

Salim Ali and Ripley, H.B. No. 845, Vol. 4 : 224.

Status : Resident, very rare.

Distribution : Throughout the Park in well-wooded places and open forest.

220. **Picoides mahrattensis mahrattensis** (Latham), Yellowfronted Pied or Mahratta Woodpecker.

Salim Ali and Ripley, H.B. No. 847, Vol. 4 : 226.

Status : Resident, rare.

Distribution : Throughout the Park in moist deciduous biotope.

221. **Picoides canicapillus mitchellii** (Malherbe), West Himalayan Grey-crowned Pygmy Woodpecker.

Salim Ali and Ripley, H.B. No. 848, Vol. 4 : 228.

Status : Resident, common.

Distribution : Commonly observed throughout the Park.

222. **Picoides nanus nanus** (Vigors), Northern Browncrowned Pygmy Woodpecker.

Salim Ali and Ripley, H.B. No. 851, Vol. 4 : 231.

Status : Resident, rare.

Distribution : Throughout the Park in Sal forest.

Genus : **Chrysocolaptes** Blyth

223. **Chrysocolaptes lucidus sultaneus** (Hodgson), West Himalayan Larger Goldenbacked Woodpecker.

Salim Ali and Ripley, H.B. No. 860, Vol. 4 : 242.

Status : Resident, rare.

Distribution : Throughout the Park in Sal forest.

Family : **PITTIDAE**
(Pittas)

Genus : **Pitta** Vieillot

224. **Pitta brachyura** (Linnaeus), Indian Pitta.

Salim Ali & Ripley, HB. No. 867, Vol. 4 : 252.

Status : Resident, common.

Distribution : Throughout the Park. Affects scrub jungle, light deciduous and evergreen jungles of the Park.

225. *Pitta sordida cucullata* Hartlaub, Hooded or Greenbreasted Pitta.

Salim Ali & Ripley, HB. No. 869, Vol. 4 : 254.

Status : Resident with some seasonal altitudinal movements, common.*Distribution* : Throughout the Park. Affects moist deciduous and scrub jungles.

Order : PASSERIFORMES

Family : ALAUDIDAE : Larks

Genus : **Mirafra** Horsfield**226. *Mirafra javanica cantillans* Blyth, Singing Bush Lark.**

Salim Ali & Ripley, HB. No. 872, Vol. 5 : 2.

Status : Resident, very rare.*Distribution* : Throughout the Park in scrub and grasslands.Genus : **Eremopterix** Kaup**227. *Eremopterix grisea* (Scopoli), Ashycrowned Finch-Lark.**

Salim Ali & Ripley, HB. No. 878, Vol. 5 : 9.

Status : Resident, very rare.*Distribution* : Grasslands and sandy stretches by river.**228. *Calandrella cinerea dukhunensis* (Sykes), Rufous Short-toed Lark.**

Salim Ali & Ripley, HB. No. 886, Vol. 5 : 21.

Status : Winter visitor, very rare.*Distribution* : Grasslands and stony river beds.Genus : **Galerida** Boie**229. *Galerida cristata chendoola* (Franklin), Indian Crested Lark.**

Salim Ali & Ripley, HB. No. 899, Vol. 5 : 37.

Status : Resident, very common.*Distribution* : Throughout the Park, observed in grassland near Dhikala, Paterpani, Khinanuli and Bijrani.Genus : **Alauda** Linnaeus**230. *Alauda gulgula lhamarum* R. & A. Meinertzhagen, Kashmir Small Skylark.**

Salim Ali & Ripley, HB. No. 905, Vol. 5 : 44.

Status : Resident, subject to seasonal local migratory and nomadic movements, very rare.*Distribution* : Throughout the Park in grasslands.

Genus : **Hirundo** Linnaeus231. **Hirundo rupestris** Scopoli, Crag Martin.

Salim Ali & Ripley, H.B. No. 913, Vol. 5 : 53.

Status : Resident, very rare.

Distribution : Throughout the Park in ridges.

232. **Hirundo concolor concolor** Sykes, Dusky Crag Martin.

Salim Ali & Ripley, H.B. No. 914, Vol. 5 : 55.

Status : Resident, subject to local movements, very common.

Distribution : Throughout the Park near the rest houses, lake and in Chaur on electric wires.

233. **Hirundo rustica** Linnaeus, Western Swallow.

Salim Ali & Ripley, H.B. No. 916, Vol. 5 : 57.

Status : Resident, very common.

Distribution : Throughout the Park. Observed near Dhikala, Paterpani, Khinanuli and Sarapduli.

234. **Hirundo smithii filifera** Stephens, Indian Wiretailed Swallow.

Salim Ali & Ripley, H.B. No. 921, Vol. 5 : 63.

Status : Summer visitor, common.

Distribution : Throughout the Park on electric wires from end of March to end of August.

235. **Hirundo fluvicola** Blyth, Indian Cliff Swallow.

Salim Ali & Ripley, H.B. No. 922, Vol. 5 : 64.

Status : Summer visitor, abundant.

Distribution : Throughout the Park. Very common from March to September. 1000 to 1500 individuals were observed on electric wires, and flying over the lake near Dhikala and Khinanuli.

236. **Hirundo daurica nipalensis** Hodgson, Himalayan Striated or Redrumped Swallow.

Salim Ali & Ripley, H.B. No. 925, Vol. 5 : 68.

Status : Summer visitor, abundant.

Distribution : Throughout the Park in grasslands, on electric wires and near water. 2000 to 3000 individuals were observed resting on electric wires near Dhikala from April to August.

237. *Hirundo daurica erythropygia* Sykes, Indian Striated or Redrumped Swallow.

Salim Ali & Ripley, H. B. No. 927, Vol. 5 : 70.

Status : Resident, common.

Distribution : Throughout the Park in open places, and clearings in light deciduous forest.

Family : LANIIDAE : Shrikes or 'Butcher Birds'

Genus : **Lanius** Linnaeus

238. *Lanius excubitor lahtora* (Sykes), Indian Grey Shrike.

Salim Ali & Ripley, HB. No. 933, Vol. 5 : 79.

Status : Resident, rare.

Distribution : Observed near Dhikala and Paterpani from April to August.

239. *Lanius vittatus vittatus* Valeniennes, Indian Baybacked Shrike.

Salim Ali & Ripley, HB. No. 940, Vol. 5 : 85.

Status : Resident, rare.

Distribution : Observed near Dhikala and Paterpani during summer months.

240. *Lanius schach erythronotus* (Vigors), Rufousbacked Shrike

Salim Ali & Ripley, HB. No. 946, Vol. 5 : 93.

Status : Local migrant, very common.

Distribution : Throughout the Park, in open deciduous forest and scrub.

Family : ORIOLIDAE : Orioles

Genus : **Oriolus** Linnaeus

241. *Oriolus oriolus kundoo* Sykes, Indian Golden Oriole.

Salim Ali & Ripley, HB. No. 953, Vol. 5 : 103.

Status : Summer visitor, common.

Distribution : Throughout the Park from April to August.

242. *Oriolus xanthornus xanthornus* (Linnaeus), North Indian Blackheaded Oriole.

Salim Ali & Ripley, HB. No. 958, Vol. 5 : 108.

Status : Resident, very common.

Distribution : Throughout the Park. Very common near Dhikala, Khinanuli and Paterpani.

Family : DICRURIDAE : Drongos

Genus : **Dicrurus** Vieillot

243. **Dicrurus adsimilis albirictus** (Hodgson), North Indian Black Drongo or King Crow.

Salim Ali & Ripley, HB. No. 962, Vol. 5 : 114.

Status : Resident, subject to some seasonal local and altitudinal migration, common.

Distribution : Throughout the Park. Effects light hill forest and grasslands.

244. **Dicrurus caeruleus caerulescens** (Linnaeus), Indian Whitebellied Drongo.

Salim Ali & Ripley, HB. No. 967, Vol. 5 : 122.

Status : Resident, very rare.

Distribution : Throughout the Park in deciduous and bamboo forests.

245. **Dicrurus aeneus aeneus** Vieillot, Bronzed Drongo.

Salim Ali & Ripley, HB. No. 971, Vol. 5 : 126.

Status : Resident, common.

Distribution : Throughout the Park. Commonly observed in grasslands and edge of the forest during summer months.

246. **Dicrurus hottentottus hottentottus** (Linnaeus), Haircrested or Spangled Drongo.

Salim Ali & Ripley, HB. No. 973, Vol. 5 : 131.

Status : Resident, common.

Distribution : Throughout the Park. Commonly observed during summer months. Affects moist deciduous and evergreen parts of the Park.

Family : ARTAMIDAE : Swallow-Shrikes or Wood Swallows

Genus : **Artamus** Vieillot

247. **Artamus fuscus** Vieillot, Ashy Swallow-Shrike.

Salim Ali & Ripley, HB. No. 982, Vol. 5 : 143.

Status : Resident, seasonal local migrant, very rare.

Distribution : Throughout the Park in grasslands, on electric wires and tree tops.

Genus : **Sturnus** Linnaeus

248. **Sturnus malabaricus malabaricus** (Gmelin), Greyheaded Myna.

Salim Ali & Ripley, HB. No. 987, Vol. 5 : 152.

Status : Resident, abundant.

Distribution : Throughout the Park. Abundant from April to June. 3000 to 5000 individuals were observed at their roosting place near Mota Sal.

249. **Sturnus pagodarum** (Gmelin), Blackheaded or Brahminy Myna.

Salim Ali & Ripley, HB. No. 994, Vol. 5 : 160.

Status : Resident, rare.

Distribution : Throughout the Park. Common at Dhikala and Paterpani during summer months.

250. **Sturnus vulgaris poltaratskyi** Finsch, Finsch's or Common Indian Starling.

Salim Ali & Ripley, HB. No. 997, Vol. 5 : 166.

Status : Passage migrant, very rare.

Distribution : Observed twice in two years, once in November and once in April near Dhikala.

251. **Sturnus contra contra** Linnaeus, Indian Pied Myna.

Salim Ali & Ripley, HB. No. 1002, Vol. 5 : 172.

Status : Resident, very rare.

Distribution : Throughout the Park near well watered places.

Genus : **Acridotheres** Vieillot

252. **Acridotheres tristis tristis** (Linnaeus), Indian Myna.

Salim Ali & Ripley, HB. No. 1006, Vol. 5 : 177.

Status : Resident, abundant.

Distribution : Throughout the Park, abundant during summer months (April to June). At their roosting places 5000 to 7000 individuals were observed at dusk at Dhikala near Mota Sal.

253. **Acridotheres ginginianus** (Latham), Bank Myna.

Salim Ali & Ripley, HB. No. 1008, Vol. 5 : 181.

Status : Resident, rare.

Distribution : Observed near Dhikala and Paterpani during summer months.

254. **Acridotheres fuscus fuscus** (Wagler), Northern Jungle Myna.

Salim Ali & Ripley, H.B. No. 1009, Vol. 5 : 183.

Status : Resident, rare.

Distribution : Observed near Dhikala and Paterpani during summer months.

Family : CORVIDAE : Crows, Magpies, Jays, etc.

Genus : **Cissa** Boie

255. **Cissa flavirostris cucullata** (Gould), Western yellowbilled Blue Magpie.

Salim Ali & Ripley, H.B. No. 1025, Vol. 5 : 207.

Status : Resident, rare.

Distribution : Observed near Dhikala during summer months.

256. **Cissa erythrorhyncha occipitalis** (Blyth), Himalayan Redbilled Blue Magpie.

Salim Ali & Ripley, H.B. No. 1027, Vol. 5 : 209.

Status : Resident with some altitudinal movements, common.

Distribution : Observed from April to June at Dhikala near water hole and Sal forest.

Genus : **Dendrocitta** Gould

257. **Dendrocitta vagabunda bristilo** Paynter, Northwestern Tree Pie.

Salim Ali & Ripley, H.B. No. 1030a, Vol. 5 : 216.

Status : Resident, common.

Distribution : Throughout the Park in Sal forest.

258. **Dendrocitta vagabunda vagabunda** (Latham), Northeastern Tree Pie.

Salim Ali & Ripley, H.B. No. 1032, Vol. 5 : 218.

Status : Resident, common.

Distribution : Throughout the Park in Sal forest.

Genus : **Corvus** Linnaeus

259. **Corvus splendens splendens** Vieillot, Indian House Crow.

Salim Ali & Ripley, H.B. No. 1049, Vol. 5 : 244.

Status : Resident subject to altitudinal and local movemet, rare.

Distribution : Observed near Dhikala and Paterpani.

260. *Corvus macrorhynchos intermedius* Adams, Himalayan Jungle Crow.

Salim Ali & Ripley, HB. No. 1054, Vol. 5 : 252.

Status : Resident, common.

Distribution : Commonly observed throughout the Park.

261. *Corvus macrorhynchos culminatus* Sykes, Indian Jungle Crow.

Salim Ali & Ripley, HB. No. 1057, Vol. 5 : 256.

Status : Resident, very common.

Distribution : Very common throughout the Park. Usually observed near forest rest houses and on the carcasses of animals killed by the tiger and panther.

Family : CAMPEPHAGIDAE
(Cuckoo-Shrikes and Minivets)

Genus : *Tephrodornis* Swainson

262. *Tephrodornis pondicerianus pallidus* Ticehurst, Sind Wood Shrike.

Salim Ali & Ripley, HB. No. 1069, Vol. 6 : 10.

Status : Resident, common.

Distribution : Throughout the Park in Scrub jungle.

Genus : *Coracina* Vieillot

263. *Coracina novaehollandiae nipalensis* (Hodgson), Himalayan Large Cuckoo Shrike.

Salim Ali & Ripley, HB. No. 1073, Vol. 6 : 16.

Status : Resident, very rare,

Distribution : Scrub jungle and open places.

264. *Coracina melaschistos melaschistos* (Hodgson), Dark Grey Cuckoo-Shrike.

Salim Ali & Ripley, HB. No. 1077, Vol. 6 : 19.

Status : Altitudinal migrant, very rare.

Distribution : Open forest and bamboo jungles.

Genus : *Pericrocotus* Boie

265. *Pericrocotus flammeus speciosus* (Latham), North Indian Scarlet Minivet.

Salim Ali & Ripley, HB. No. 1080, Vol. 6 : 25.

Status : Resident, common.

Distribution : Throughout the Park in Sal forest and the edge of dense forest. Very common near Khinanuli, Thandisarak & Dhikala Ramnagar road.

266. *Pericrocotus roseus roseus* (Vieillot), Rosy Minivet.

Salim Ali & Ripley, HB. No. 1089, Vol. 6 : 37.

Status : Partial migrant, very rare.

Distribution : Affects deciduous forest of the Park.

267. *Pericrocotus cinnamomeus peregrinus* (Linnaeus), Northern Small Minivet.

Salim Ali & Ripley, HB. No. 1091, Vol. 6 : 41.

Status : Resident, rare.

Distribution : Throughout the Park in open forest, scrub and bushes, small trees and mango tops.

Family : IRENIDAE

(Fairy Bluebirds, Ioras, Leaf Birds)

Genus : *Aegithina* Vieillot

268. *Aegithina tiphia tiphia* (Linnaeus), Common Iora.

Salim Ali & Ripley, HB. No. 1098, Vol. 6 : 49.

Status : Resident, very rare.

Distribution : Throughout the Park near the edge of open forest and scrub jungle.

Genus : *Chloropsis* Jardine & Selby

269. *Chloropsis aurifrons aurifrons* (Temminck), Northern Goldfronted Chloropsis.

Salim Ali & Ripley, HB. No. 1108, Vol. 6 : 55.

Status : Resident, very rare.

Distribution : Observed twice in two years near Kanda and Dhikala.

270. *Chloropsis hardwickii hardwickii* Jardine & Selby, Orangebellied Chloropsis.

Salim Ali & Ripley, HB. No. 1106, Vol. 6 : 59.

Status : Resident, very rare.

Distribution : Throughout the Park in moist, deciduous forests.

Genus : **Pycnonotus** Boie

271. **Pycnonotus melanicterus flaviventris** (Tickell), Blackcrested Yellow Bulbul.

Salim Ali & Ripley, HB. No. 1115, Vol. 6 : 72.

Status : Resident, rare.

Distribution : Throughout the Park, observed near Khinanuli road, Paterpani, and Dhikala surroundings in the branches of the tall trees.

272. **Pycnonotus jocosus pyrhotis** (Bonaparte), Kumaon Redwhiskered Bulbul.

Salim Ali & Ripley, HB. No. 1118, Vol. 6 : 75.

Status : Resident, very rare.

Distribution : Observed once near water hole at Dhikala.

273. **Pycnonotus leucogenys leucotis** (Gould), White-eared Bulbul.

Salim Ali & Ripley, H.B. No. 1123, Vol. 6 : 81.

Status : Resident, rare.

Distribution : Throughout the Park.

274. **Pycnonotus leucogenys leucogenys** (Gray), Whitecheeked Bulbul.

Salim Ali & Ripley, H.B. No. 1125, Vol. 6 : 83.

Status : Resident, common, subject to some local movements.

Distribution : Commonly observed throughout the Park in grasslands and edge of the forest.

275. **Pycnonotus cafer intermedius** Blyth, Punjab Redvented Bulbul.

Salim Ali & Ripley, H.B. No. 1126, Vol. 6 : 85.

Status : Resident, very common.

Distribution : Throughout the Park in scrubs and bushes at the edge of the forest.

Family : MUSCICAPIDAE
(Babblers)

Genus : **Dumetia** Blyth

276. **Dumetia hyperythra hyperythra** (Franklin), Rufousbellied Babbler.

Salim Ali and Ripley, H. B. No. 1222, Vol. 6 : 181.

Status : Resident, common.

Distribution : Throughout the Park in tall grasses and scrub jungles.

Genus : **Chrysomma** Blyth**277. Chrysomma sinense hypoleucum** (Franklin), Western Yelloweyed Babbler.

Salim Ali and Ripley, H. B. No. 1230, Vol. 6 : 189.

Status : Resident, common.

Distribution : Throughout the Park in the grasslands like the Chauras of Dhikala, Paterpani and Khinanuli and in the bushes along Ram Ganga river.

Genus : **Turdoides** Cretzschmar**278. Turdoides caudatus caudatus** (Dumont), Common Babbler.

Salim Ali and Ripley, H. B. No. 1254, Vol. 6 : 215.

Status : Resident, rare.

Distribution : Throughout the Park in the dense forest and scrub.

279. Turdoides striatus striatus (Dumont), Bengal Jungle Babbler.

Salim Ali and Ripley, H. B. No. 1265, Vol. 6 : 230.

Status : Resident, very common.

Distribution : Throughout the Park at the edge of forest.

Genus : **Garrulax** Lesson**280. Garrulax leucolophus leucolophus** (Hardwicke), Himalayan White-crested Laughing Thrush.

Salim Ali and Ripley, H. B. No. 1283, Vol. 7 : 14.

Status : Resident, common.

Distribution : Throughout the Park in forest with dense undergrowth and bamboo forest. Very common on Khinanuli road and Thandi Sarak.

281. Garrulax rufogularis occidentalis (Hartert), Western Rufous-chinned Laughing Thrush.

Salim Ali and Ripley, H. B. No. 1292, Vol. 7 : 26.

Status : Resident, very rare.

Distribution : Throughout the Park in dense forest and scrub jungle.

282. *Garrulax lineatus lineatus* (Vigors), Simla Streaked Laughing Thrush.

Salim Ali and Ripley, H. B. No. 1314, Vol. 7 : 46.

Status : Resident, subject to seasonal vertical movements, rare.

Distribution : Throughout the Park in bush covered slopes and undergrowth in open forest.

283. *Garrulax erythrocephalus erythrocephalus* (Vigors), Redheaded Laughing Thrush.

Salim Ali and Ripley, H. B. No. 1324, Vol. 7 : 57.

Status : Resident, subject to vertical movements, rare.

Distribution : Throughout the Park in dense undergrowth.

Genus : ***Muscicapa*** Brisson

284. *Muscicapa leucomelanura leucomelanura* (Hodgson), Western Slaty Blue Flycatcher.

Salim Ali and Ripley, H. B. No. 1423, Vol. 7 : 170.

Status : Observed near Ram Ganga river in tall grass, undergrowth and mixed forest.

Distribution : Local migrant.

285. *Muscicapa tickelliae tickelliae* (Blyth), Tickell's Redbreasted Blue Flycatcher.

Salim Ali and Ripley, H. B. No. 1442, Vol. 7 : 193.

Status : Resident, subject to local movements, rare.

Distribution : Throughout the Park in thick bushes.

286. *Muscicapa thalassina thalassina* Swainson, Verditer Flycatcher.

Salim Ali and Ripley, H. B. No. 1445, Vol. 7 : 198.

Status : Summer visitor, rare.

Distribution : Observed between March to August at the edge of dense forest.

Genus : ***Culicicapa*** Swinhoe

287. *Culicicapa ceylonensis calochrysea* Oberholser, Northern Grey-headed Flycatcher.

Salim Ali and Ripley, H. B. No. 1448, Vol. 7 : 202.

Status : Summer visitor, very rare.

Distribution : Observed on Khinanuli road and Kanda road.

Genus : **Rhipidura** Vigors & Horsfield288. **Rhipidura hypoxantha** Blyth, Yellowbellied Fantail Flycatcher.

Salim Ali and Ripley, H.B. No. 1450, Vol. 7 : 206.

Status : Altitudinal migrant, very rare.

Distribution : Throughout the Park in various kinds of forest secondary growth, bushes and scrub.

289. **Rhipidura aureola aureola** Lesson, Northern Whitebrowed Fantail Flycatcher.

Salim Ali and Ripley, H.B. No. 1451, Vol. 7 : 207.

Status : Resident, subject to local movements, common.

Distribution : Throughout the Park. Very common from March to October.

290. **Rhipidura albicollis canescens** (Koelz), Western Whitethroated Fantail Flycatcher.

Salim Ali and Ripley, H.B. No. 1454, Vol. 7 : 211.

Status : Resident, subject to vertical movements, common.

Distribution : Throughout the Park on the branches of trees and bushes. Very common from March to October.

Genus : **Terpsiphone** Gloger291. **Terpsiphone paradisi leucogaster** (Swainson), West Himalayan Paradise Flycatcher.

Salim Ali and Ripley, H.B. No. 1460, Vol. 7 : 216.

Status : Summer visitor, very common.

Distribution : Throughout the Park from May to September.

Genus : **Prinia** Horsfield292. **Prinia subflava terricolor** (Hume), Northwestern Plain Wren-Warbler.

Salim Ali and Ripley, H.B. No. 1510, Vol. 8 : 52.

Status : Resident, subject to seasonal movements, common.

Distribution : Throughout the Park in grasslands and scrub jungle.

293. ***Prinia socialis stewarti*** Blyth, Northern Ashy Wren-Warbler.

Salim Ali and Ripley, H.B. No. 1515, Vol. 8 : 57.

Status : Resident, common.

Distribution : Throughout the Park in tall grasses and bushes near river and the Lake.

294. ***Prinia sylvatica gangetica*** (Blyth), Gangetic Jungle Wren-Warbler.

Salim Ali and Ripley, H.B. No. 1519, Vol. 8 : 62.

Status : Resident, common.

Distribution : Throughout the Park in grasslands and bushes.

Genus : ***Orthotomus*** Horsfield

295. ***Orthotomus sutorius guzuratus*** (Latham), Indian Tailor Bird.

Salim Ali and Ripley, H.B. No. 1535, Vol. 8 : 81.

Status : Resident, very common.

Distribution : Throughout the Park in bushes, scrub jungle and low undergrowth.

Genus : ***Erithacus*** Cuvier

296. ***Erithacus svecicus svecicus*** (Linnaeus), Northern Bluethroat.

Salim Ali and Ripley, H.B. No. 1644, Vol. 8 : 217.

Status : Winter visitor, rare.

Distribution : Observed twice in two years near Dhikala.

297. ***Erithacus pectoralis pectoralis*** (Gould), West Himalayan Rubythroat.

Salim Ali and Ripley, H.B. No. 1647, Vol. 8 : 221.

Status : Summer breeding visitor, rare.

Distribution : Throughout the Park in long grasses and dense scrub.

Genus : ***Copsychus*** Wagler

298. ***Copsychus saularis saularis*** (Linnaeus), Indian Magpie-Robin.

Salim Ali and Ripley, H.B. No. 1661, Vol. 8 : 239.

Status : Resident, very common.

Distribution : Throughout the Park.

Genus : **Phoenicurus** Forster299. **Phoenicurus erythronotus** (Eversmann), Eversmann's Redstart.

Salim Ali and Ripley, H.B. No. 1669, Vol. 8 : 249.

Status : Winter visitor, very rare.*Distribution* : Scrub jungle and dry river beds.300. **Phoenicurus ochruros phoenicuroides** (Moore), Kashmir Black Redstart.

Salim Ali and Ripley, H.B. No. 1671, Vol. 8 : 253.

Status : Visitor, very rare.*Distribution* : Throughout the Park especially in stony river bed.Genus : **Rhyacornis** Blanford301. **Rhyacornis fuliginosus fuliginosus** (Vigors), Plumbeous Redstart.

Salim Ali and Ripley, H.B. No. 1679, Vol. 8 : 266.

Status : Resident with altitudinal movements, common.*Distribution* : Observed throughout the Park near the Ram Ganga river and the Lake.Genus : **Enicurus** Temminck302. **Enicurus schistaceus** (Hodgson), Slatybacked Forktail.

Salim Ali and Ripley, H.B. No. 1686, Vol. 9 : 10.

Status : Resident, subject to vertical movements, very rare.*Distribution* : Throughout the Park in rocky streams and riverbed.Genus : **Saxicola** Bechstein303. **Saxicola torquata przewalskii** (Pleske), Tibetan Collared Bush Chat.

Salim Ali and Ripley, H.B. No. 1696, Vol. 9 : 27.

Status : Winter visitor, common.*Distribution* : Throughout the Park. Commonly observed in grasslands during winter months.304. **Saxicola torquata indica** (Blyth), Indian Collared Bush Chat.

Salim Ali and Ripley, H.B. No. 1697, Vol. 9 : 28.

Status : Summer visitor, common.*Distribution* : Throughout the Park. Commonly observed in grasslands.

305. **Saxicola caprata bicolor** Sykes, Northern Pied Bush Chat.

Salim Ali and Ripley, H.B. No. 1700, Vol. 9 : 32.

Status : Partial migrant, very common.

Distribution : Throughout the park. Common in grasslands.

306. **Saxicola ferrea** Gray, Darkgrey Bush Chat.

Salim Ali and Ripley, H.B. No. 1705, Vol. 9 : 37.

Status : Resident, subject to altitudinal and short range seasonal movements, common.

Distribution : Throughout the Park. Commonly observed in grasslands, along the river.

Genus : **Chaimarrornis** Hodgson

307. **Chaimarrornis leucocephalus** (Vigors), Whitecapped Redstart or River Chat.

Salim Ali and Ripley, H.B. No. 1716, Vol. 9 : 57.

Status : Altitudinal migrant, common.

Distribution : Throughout the Park. Commonly observed near Ram Ganga river and the Lake from November to March.

Genus : **Saxicoloides** Lesson

308. **Saxicoloides fulicata cambaiensis** (Latham), Brownbacked Indian Robin.

Salim Ali and Ripley, H.B. No. 1717, Vol. 9 : 60.

Status : Resident, very common.

Distribution : Throughout the Park. Commonly observed in grasslands, bushes and near rest houses.

309. **Saxicoloides fulicata fulicata** (Linnaeus), Blackbacked Indian Robin.

Salim Ali and Ripley, H.B. No. 1720, Vol. 9 : 62.

Status : Resident, very common.

Distribution : Throughout the Park. Commonly observed in grasslands and bushes near the rest house.

Genus : **Monticola** Boie310. **Monticola solitarius pandoo** (Sykes), Indian Blue Rock Thrush.

Salim Ali and Ripley, H.B. No. 1726, Vol. 9 : 73.

Status : Summer visitor, very rare.

Distribution : Throughout the Park near rocky river bank.

Genus : **Myiophoneus** Temminck311. **Myiophoneus caeruleus temmincki** (Vigors), Himalayan Whistling Thrush.

Salim Ali and Ripley, H.B. No. 1729, Vol. 9 : 79.

Status : Resident, subject to vertical movements, very common.

Distribution : Throughout the Park. Commonly observed from November to March.

Genus : **Zoothera** Vigors312. **Zoothera citrina citrina** (Latham), Orangeheaded Ground Thrush.

Salim Ali and Ripley, H.B. No. 1733, Vol. 9 : 86.

Status : Partial migrant, very rare.

Distribution : Throughout the Park in damp and moist forest.

313. **Zoothera mollissima whiteheadi** (Baker), Western Plainbacked Mountain Thrush.

Salim Ali and Ripley, H.B. No. 1738, Vol. 9 : 92.

Status : Altitudinal migrant, very rare.

Distribution : Throughout the Park at rocky places and scattered bushes.

Family : **TROGLODYTIDAE**

(Wrens)

Genus : **Troglodytes** Vieillot314. **Troglodytes troglodytes neglectus** Brooks, Kashmir Wren.

Salim Ali and Ripley, H.B. No. 1770, Vol. 9 : 136.

Status : Resident, subject to vertical movements, very rare.

Distribution : Throughout the Park near low scrub and boulders.

315. **Troglodytes troglodytes nipalensis** Blyth, Nepal Wren.

Salim Ali and Ripley, H.B. No. 1771, Vol. 9 : 137.

Status : Subject to vertical movements, rare.

Distribution : Throughout the Park in rocky areas.

Family : PARIDAE
(Tits or Titmice)

Genus : **Parus** Linnaeus

316. **Parus major nipalensis** Hodgson, Nepal Grey Tit.

Salim Ali and Ripley, H.B. No. 1793, Vol. 9 : 168.

Status : Resident, subject to vertical or local movements, common.

Distribution : Throughout the Park. Commonly observed at the edge of forest in bushes.

317. **Parus monticolus monticolus** Vigors Greenbacked Tit.

Salim Ali and Ripley, H.B. No. 1799, Vol. 9 : 174.

Status : Resident, subject to vertical movements, rare.

Distribution : Rarely observed at the edge of forest on bushes and small trees.

Family : SITTIDAE
(Nuthatches and Creepers)
Genus : **Sitta** Linnaeus

318. **Sitta castanea almorae** Kinnear & Whistler, Western Chestnutbellied Nuthatch.

Salim Ali and Ripley, H.B. No. 1827, Vol. 9 : 212.

Status : Resident, rare.

Distribution : Throughout the park in deciduous forest, in bushes and in trees.

319. **Sitta leucopsis leucopsis** Gould, Western Whitecheeked Nuthatch.

Salim Ali and Ripley, H.B. No. 1832, Vol. 9 : 217.

Status : Resident, subject to vertical movements, very rare.

Distribution : Throughout the Park in mixed forest.

320. **Sitta frontalis frontalis** Swainson, Velvetfronted Nuthatch.

Salim Ali and Ripley, H.B. No. 1838, Vol. 9 : 224.

Status : Resident, common.

Distribution : Throughout the Park. Commonly observed in *Latana* bushes and in the trees.

Genus : **Tichodroma** Illiger**321. Tichodroma muraria nepalensis** Bonaparte, Wall Creeper.

Salim Ali and Ripley, H.B. No. 1899, Vol. 9 : 226.

Status : Resident, subject to vertical movements, rare.

Distribution : Occasionally observed near vertical cliffs and on boulders in river beds.

Family : **CERTHIDAE**
(Tree Creepers)

Genus : **Certhia** Linnaeus

322. Certhia himalayana himalayana Vigors, Himalayan Tree Creeper.

Salim Ali and Ripley, H.B. No. 1847, Vol. 9 : 297.

Status : Resident, subject to vertical movements, very rare.

Distribution : Throughout the park in dense forest.

Family : **MOTACILLIDAE**
(Wagtails and Pipits)

Genus : **Motacilla** Linnaeus

323. Motacilla flava beema (Sykes), Blueheaded Yellow Wagtail

Salim Ali and Ripley, H.B. No. 1876, Vol. 9 : 278.

Status : Winter visitor, very common.

Distribution : Observed throughout the Park near the Ram Ganga River and the Lake.

324. Motacilla flava melanogrisea (Homeyer), Turkestan Blackheaded Wagtail.

Salim Ali and Ripley, H.B. No. 1878, Vol. 9 : 280.

Status : Winter visitor, very rare.

Distribution : Moist grassy places near the Lake and river.

325. Motacilla citreola citreola Pallas, Northern Yellowheaded Wagtail.

Salim Ali and Ripley, H.B. No. 1881, Vol. 9 : 282.

Status : Winter visitor, very rare.

Distribution : Throughout the Park in moist grassy places near the Lake and river.

326. *Motacilla citreola werae* (Buturlin) Western Yellowheaded Wagtail.

Salim Ali and Ripley, H.B. No. 1882, Vol. 9 : 283.

Status : Winter visitor, very rare.

Distribution : Throughout the Park in moist grassy places near the Lake and river.

327. *Motacilla cinerea cinerea* Tunstall, Grey Wagtail.

Salim Ali and Ripley, H.B. No. 1884, Vol. 9 : 285.

Status : Summer visitor, very rare.

Distribution : Throughout the Park near the Lake, river and streams on rocks and boulders.

328. *Motacilla alba dukhunensis* Sykes, Indian White Wagtail.

Salim Ali and Ripley, H.B. No. 1885, Vol. 9 : 288.

Status : Winter visitor, very common.

Distribution : Observed throughout the Park near the Lake, Ram Ganga river and in moist grassy places from November to June.

329. *Motacilla alba personata* Gould, Masked Wagtail.

Salim Ali and Ripley, H.B. No. 1886, Vol. 9 : 291.

Status : Summer visitor, rare.

Distribution : Occasionally observed near the Dhikala Rest House.

330. *Motacilla maderaspatensis* Gmelin, Large Pied Wagtail.

Salim Ali and Ripley, H.B. No. 1891, Vol. 9 : 296.

Status : Resident, common.

Distribution : Throughout the Park near the Ram Ganga and the Lake on rocks and stones.

Family : DICAEDAE
(Flowerpeckers)

Genus ; *Dicaeum* Cuvier

331. *Dicaeum agile agile* (Tickell), Indian Thickbilled Flowerpecker.

Salim Ali and Ripley, H.B. Nos. 1892, 1894, Vol. 10 : 2.

Status : Resident, very rare.

Distribution : Throughout the Park on flowering and fruiting trees & shrubs and moist deciduous forest.

332. **Dicaeum ignipectus ignipectus** (Blyth), Firebreasted Flowerpecker.

Salim Ali and Ripley, H.B. No. 1905, Vol. 10 : 17.

Status : Resident, subject to vertical movements, very rare.

Distribution : Throughout the Park in evergreen and deciduous forest.

Family : NECTARINIIDAE
(Sunbirds)

Genus : *Nectarinia* Illiger

333. **Nectarinia asiatica asiatica** (Latham), Indian Purple Sunbird.

Salim Ali and Ripley, H.B. No. 1917, Vol. 10 : 85.

Status : Resident, very common.

Distribution : Throughout the Park. Commonly observed in flowering trees.

Genus : *Aethopyga* Cabanis

334. **Aethopyga gouldiae gouldiae** (Vigors), Mrs Gould's Sunbird.

Salim Ali and Ripley, H.B. No. 1919, Vol. 10 : 89.

Status : Resident, very rare.

Distribution : Throughout the Park in deciduous forest.

335. **Aethopyga siparaja seheriae** (Tickell), Indian Yellowbacked Sunbird.

Salim Ali and Ripley, H.B. No. 1927, Vol. 10 : 47.

Status : Resident, subject to vertical movements, common.

Distribution : Throughout the Park on *Lantana* bushes in Sal forest.

336. **Aethopyga ignicauda ignicauda** (Hodgson), Firetailed Yellowbacked Sunbird.

Salim Ali and Ripley, H.B. No. 1930, Vol. 10 : 50.

Status : Resident, subject to vertical movements, rare.

Distribution : Occasionally observed on *Lantana* bushes in Sal forest.

Family : ZOSTEROPIDAE
(White-eyes)

Genus : *Zosterops* Vigors & Horsfield

337. **Zosterops palpebrosa palpebrosa** (Temminck), Indian White-eye.

Salim Ali and Ripley, H.B. No. 1933, Vol. 10 : 57.

Status : Resident, subject to seasonal movements, common.

Distribution : Throughout the Park. Commonly observed in *Lantana* bushes and trees in the forests.

Family : PLOCEIDAE
(Weaver Birds)

Genus : **Passer** Brisson

338. **Passer domesticus indicus** Jardine & Selby, Indian House Sparrow.

Salim Ali and Ripley, H.B. No. 1938, Vol. 10 : 63.

Status : Resident, subject to vertical movements, common.

Distribution : Throughout the Park near forest rest house.

339. **Passer rutilans cinnamomeus** (Gould), Himalayan Cinnamon Tree Sparrow.

Salim Ali and Ripley, H.B. No. 1946, Vol. 10 : 75.

Status : Resident, subject to vertical movements, rare.

Distribution : Occasionally observed near Dhikala in *Lantana* bushes and grassland.

Genus : **Ploceus** Cuvier

340. **Ploceus philippinus philippinus** (Linnaeus), Indian Baya.

Salim Ali and Ripley, H.B. No. 1957, Vol. 10 : 88.

Status : Resident, subject to seasonal movements, very common.

Distribution : Throughout the Park. Commonly observed in grasslands, on trees and bushes. Very common from June to October.

341. **Ploceus megarhynchus megarhynchus** Hume, Finn's Baya.

Salim Ali and Ripley, H.B. No. 1960, Vol. 10 : 94.

Status : Resident, very common.

Distribution : Throughout the Park. Commonly observed in grasslands, on trees and bushes.

342. **Ploceus benghalensis** (Linnaeus), Blackthroated Weaver Bird.

Salim Ali and Ripley, H.B. No. 1961, Vol. 10 : 96.

Status : Resident, subject to local movements, common.

Distribution : Throughout the Park. Commonly observed in grassland and bushes.

343. **Ploceus manyar flaviceps** Lesson, Indian Streaked Weaver Bird.

Salim Ali and Ripley, H.B. No. 1962, Vol. 10 : 98.

Status : Resident, common.

Distribution : Throughout the Park in grasslands, bushes near river and swampy flooded land.

Genus : **Estrilda** Swainson344. **Estrilda amandava amandava** (Linnaeus), Red Munia or Avadavat.

Salim Ali and Ripley, H.B. No. 1964, Vol. 10 : 101.

Status : Resident, very common.

Distribution : Throughout the Park in grasslands.

Genus : **Lonchura** Sykes345. **Lonchura malabarica malabarica** (Linnaeus), Whitethroated Munia.

Salim Ali and Ripley, H.B. No. 1966, Vol. 10 : 105.

Status : Resident, rare.

Distribution : Occasionally observed at Dhikala in grassland.

346. **Lonchura punctulata punctulata** (Linnaeus), Indian Spotted Munia.

Salim Ali and Ripley, H.B. No. 1974, Vol. 10 : 113.

Status : Resident, common.

Distribution : Throughout the Park, usually observed in grassland.

347. **Lonchura malacca rubroniger** (Hodgson), Nepal Blackheaded Munia.

Salim Ali and Ripley, H.B. No. 1976, Vol. 10 : 116.

Status : Resident, very rare.

Distribution : Throughout the Park in tall grasses and swampy ground.

Family : **FRINGILLIDAE**
(Finches)Genus : **Carduelis** Brisson348. **Carduelis spinoides spinoides** Vigors, Himalayan Greenfinch.

Salim Ali and Ripley, H.B. No. 1990, Vol. 10 : 136.

Status : Summer (breeding) visitor, common.

Distribution : Throughout the Park in grassland. Commonly observed in flock of fifty to sixty individuals near Thandi Sarak.

Genus : **Carpodacus** Kaup

349. **Carpodacus erythrinus roseatus** (Blyth), Indian Rosefinch.

Salim Ali and Ripley, H.B. No. 2011, Vol. 10 : 164.

Status : Summer visitor, rare.

Distribution : Occasionally observed near Paterpani and Dhikala.

350. **Carpodacus nipalensis kangrae** (Whistler), Garhwal Dark Rosefinch.

Salim Ali and Ripley, H.B. No. 2014, Vol. 10 : 167.

Status : Altitudinal migrant, very rare.

Distribution : Throughout the Park in open forests.

351. **Carpodacus pulcherrimus pulcherrimus** (Moore), Himalayan Beautiful Rosefinch.

Salim Ali and Ripley, H.B. No. 2023, Vol. 10 : 179.

Status ; Resident, subject to vertical movements, very rare.

Distribution : Throughout the Park on steep hillsides and in bushes.

Genus : **Pyrrhula** Bisson

352. **Pyrrhula erythrocephala** Vigors, Redheaded Bullfinch.

Salim Ali and Ripley, H.B. No. 2039, Vol. 10 : 201.

Status : Resident, subject to vertical movements, very rare.

Distribution : Throughout the Park in deciduous forest.

Family : **EMBERIZIDAE**
(Buntings)

Genus : **Emberiza** Linnaeus

353. **Emberiza cia stracheyi** Moore, Himalayan Rock Bunting.

Salim Ali and Ripley, H.B. No. 2052, Vol. 10 : 223.

Status : Resident, subject to vertical movements, very rare.

Distribution : Throughout the Park in grassy and rocky hillsides.

Genus : **Melophus** Swainson

354. **Melophus lathamii** (Gray)¹, Crested Bunting.

Salim Ali and Ripley, H.B. No. 2060, Vol. 10 : 232.

Status : Resident, subject to local and vertical movements, very common.

Distribution : Throughout the Park in grasslands.

APPENDIX III

REPTILES

Snakes

Order : SQUAMATA

Suborder : SERPENTES

Family : TYPHLOPIDAE

Genus : **Typhlops** Oppel

1. **Typhlops porrectus** Stoliczka

Status : Common.

Distribution : Throughout the Park. Seen around Dhikala, Sarupduli and Gairal.

Family : BOIDAE

Genus : **Python** Daudin

2. **Python molurus** (Linn.)

Status : Not very common.

Distribution : Throughout the Park. Seen around Bijrani, Dhikala.

Genus : **Eryx** Daudin

3. **Eryx conicus** Russell

Status : Common.

Distribution : Throughout the Park. Seen around Sarupduli and Dhikala.

Family : COLUBRIDAE

Genus : **Ptyas** Fitzinger

4. **Ptyas mucosus** (Linn.)

Status : Common.

Distribution : Throughout the Park. Seen around Bijrani and Dhikala.

Genus : **Argyrogena** Werner

5. **Argyrogena ventromaculatus** Gray and Hardwicke

Status : Common.

Distribution : Throughout the Park. Seen around Bijrani and Khinanauli.

Genus : **Lycodon** Boie

6. **Lycodon mackinnoni** Wall

Status : Common.

Distribution : Throughout the Park. Seen around Sarupaul.

Genus : **Amphiesma** Dum & Bib

7. **Amphiesma stolata** (Linn.)

Status : Common.

Distribution : Throughout the Park. Seen around Dhikala, Sarapduli and Bijrani.

Genus : **Boiga** Fitzinger

8. **Boiga trigonata** (Schneider)

Status : Common.

Distribution : Throughout the Park. Seen around Dhikala.

Family : **DASYPELTIDAE**

Genus : **Elachistodon** Reinhardt

9. **Elachistodon westermanni** Reinhardt

Status : Common.

Distribution : Throughout the Park. Seen around Dhikala.

Family : **ELAPIDAE**

Genus : **Bungarus** Daudin

10. **Bungarus caeruleus** (Schneider)

Status : Common.

Distribution : Throughout the Park. Seen around Sarapduli, Dhikala and Paterpani.

Genus : **Naja** Laurenti

11. **Naja naja** (Linn.)

Status : Common.

Distribution : Throughout the Park. Seen around Sarapduli, Dhikala and Paterpani.

Genus : **Ophiophagus**, Gunther

12. **Ophiophagus hannah** (Cantor)

Status : Rare.

Distribution : Seen around Dhikala.

Lizards

Order : SQUAMATA

Suborder : SAURIA

Family : GEKKONIDAE

Genus : **Hemidactylus** Oken

1. **Hemidactylus flaviviridis** Ruppell

Status : Common.

Distribution : Throughout the Park. Seen around Bijrani, Gairal, Sarupduli, Khinanauli and Dhikala.

2. **Hemidactylus brooki** Gray

Status : Common.

Distribution : Throughout the Park. Seen around Bijrani, Dhikala and Sarupduli.

Family : AGAMIDAE

Genus : **Calotes** Rafinesque

3. **Calotes versicolor** (Daudin)

Status : Common

Distribution : Throughout the Park. Seen around Dhikala, Khinanauli and Bijrani.

Family : SCINAIIDAE

Genus : **Riopa** Gray

4. **Riopa punctata** (Gmelin)

Status : Common.

Distribution : Throughout the Park. Seen around Paterpani and Dhikala.

Family : VARANIDAE

Genus : *Varanus* Merrem

5. *Varanus bengalensis* (Daudin)

Status : Common

Distribution : Throughout the Park. Seen around Sarapduli, Dhikala and Paterpani.

Genus : *Agama* Daudin

6. *Agama tuberculata* Gray

Status : Uncommon

Distribution : Seen around Bijrani.

Crocodiles

Order : CROCODYLIA

Family : GAVIALIDAE

Genus : *Gavialis* Opper

1. *Gavialis gangeticus* (Gmelin), The Gharial

Status : Uncommon.

Distribution : Seen along Ram Ganga at Jharna Jali, Gairal, High Bank and Lake near Dhikala.

Family : CROCODYLIDAE

Genus : *Crocodilus* Gronovius,

2. *Crocodilus palustris* Lesson, The Magar

Status : Uncommon.

Distribution : Seen along Ram Ganga river at High Bank, Jharna Jali and Lake near Dhikala.

Tortoises

Order : TESTUDINES

Family : EMYDIDAE

Genus : **Melanochelys**, Gray

1. **Melanochelys trijuga** (Schweigger)

Status : Common.

Distribution : Seen around mainly along the Ram Ganga river and lake. Dhikala (Lake), Khinanauli, Paterpani, Sarupduli, Kanda Road.

2. **Melanochelys tricarinata** (Blyth)

Status : Common.

Distribution : Mainly along the river. Seen around Dhikala and Bijrani.

Genus : **Lissemys** Smith

3. **Lissemys punctata** (Bonnaterre)

Status : Common.

Distribution : Mainly along the river and lakes edge. Seen at Dhikala and Kanda road.

PLATES



1. A view of the Ram Ganga River.

2. Wide river bed opposite Dhikala, before submergence.





3. View of the Sheeshum Island.

4. Sheeshum Island in broadening river bed near Khinnanauli.





5. A view of Sal Forest.

6. A view of the Savana-type Grass Land.





7. A view of the Median Ridge.

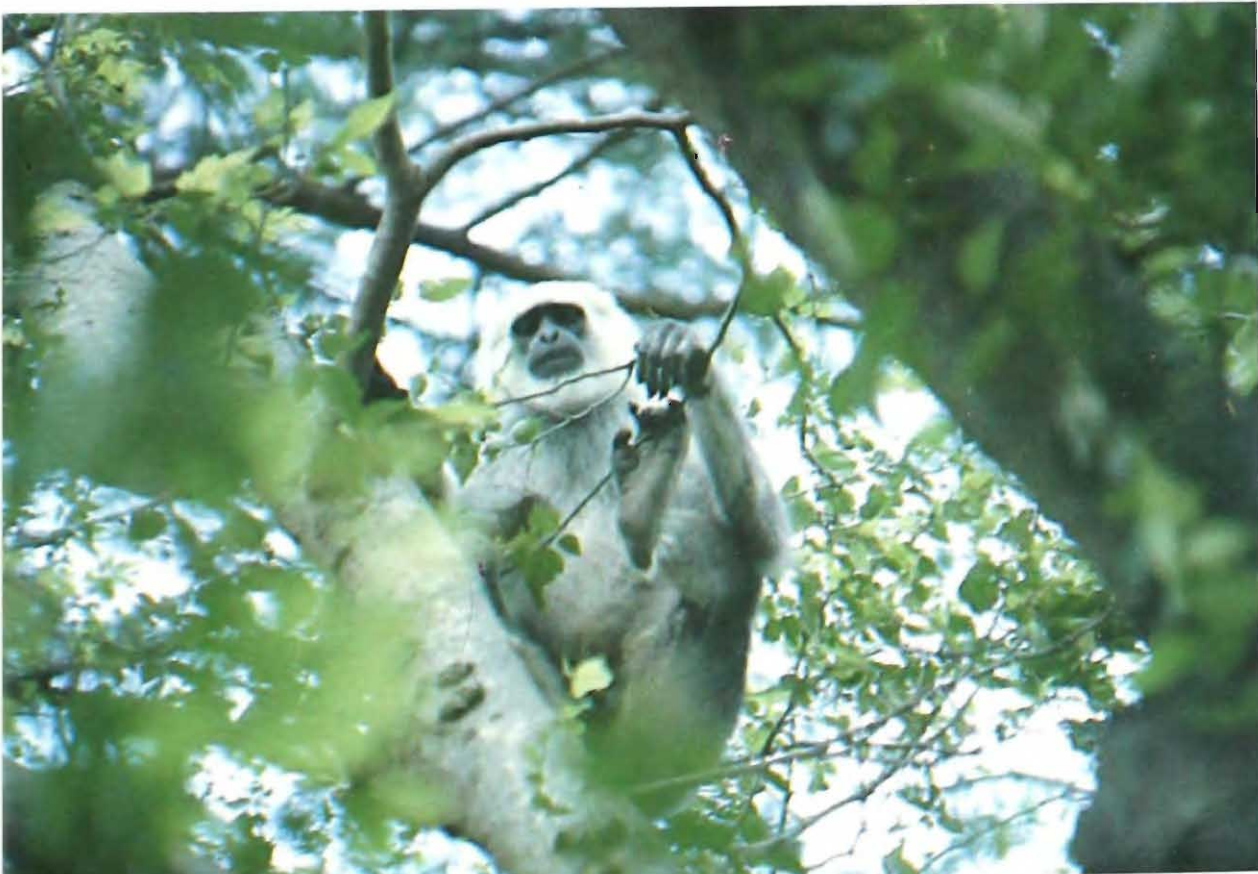
8. A view of the Reservoir.





9. Rhesus Macaque.

10. Hanuman Langur.





11. Smooth-coated Otter.

12. Tiger entering the forest.





13. Tiger resting in shade.

14. Tiger peeping through Lantana bushes.

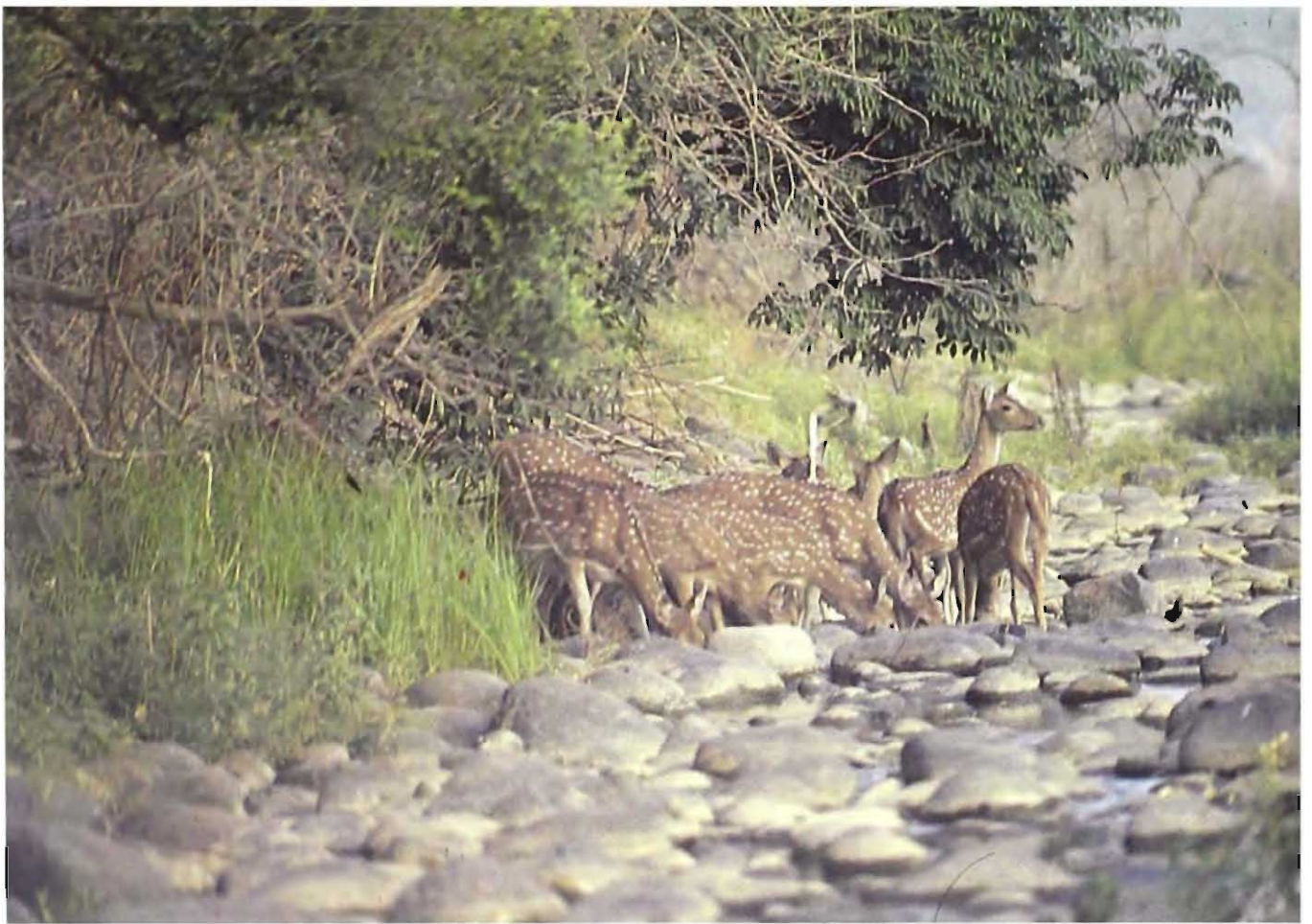




15. A lone Tusker.

16. Nilgai or Blue Bull.





17. Herd of Cheetal in a sot.

18. Cheetal Stag.





19. Cheetal Stag in velvet.

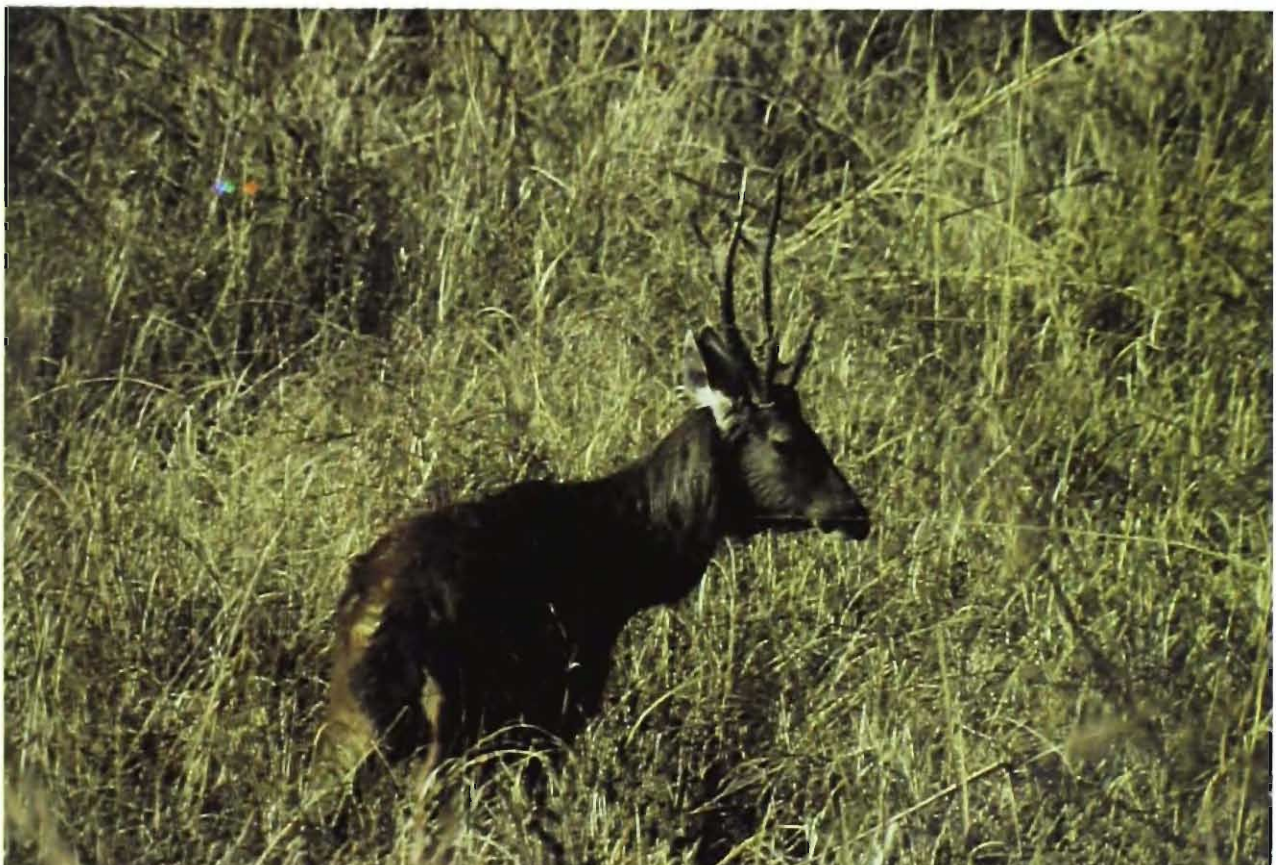
20. Female Cheetal with fawn.





21. Sambar (Hind).

22. Sambar (Stag).





23. Hog Deer Stag.

24. Barking Deer.





25. Wild Boar (Male).

26. Wild Boar (Female).





27. Rosy Pelican.

28. Darter or Snakebird.

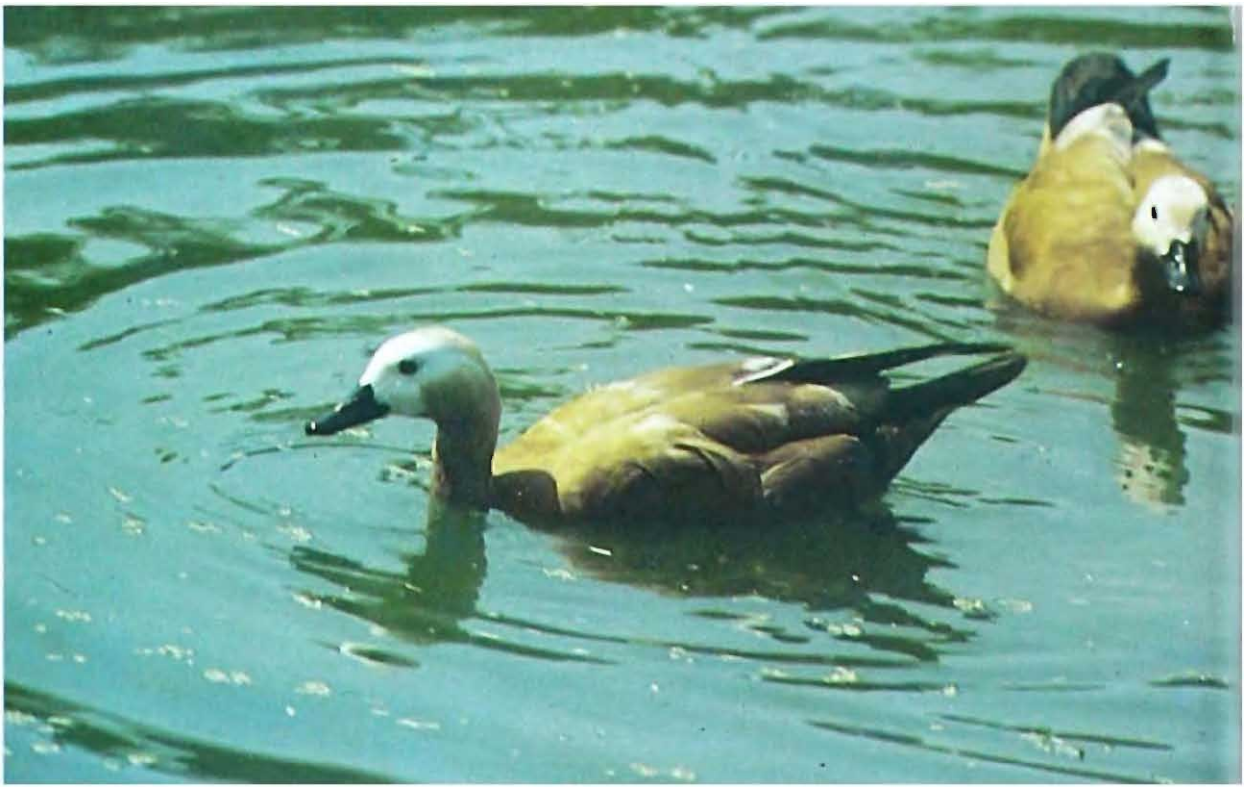




29. Painted Stork.

30. Flemmingos in flight.





31. Brahminy Duck.

32. Honey Buzzard.





33. Hawk Eagle.

34. Booted Hawk Eagle.





35. King Vulture and Indian Fox feeding on the carcass of a Cheetal.

36. King Vulture and Giffon Vulture feeding on a carcass of a Cheetal.





37. Pale Harrier.



38. Black Partridge.

39. Red Vattled Lapwing.





40. Spur-winged Lapwing.

41. Ring Dove.





42. Spotted Dove.

43. Indian Koel.





44. Pied Kingfisher.

45. Whitebreasted Kingfisher





46. Green Bee Eater.

47. Indian Roller.





48. Indian Hoopoe.

49. Black-headed Oriole.





50. Pied Mynah.

51. Magpie Robin





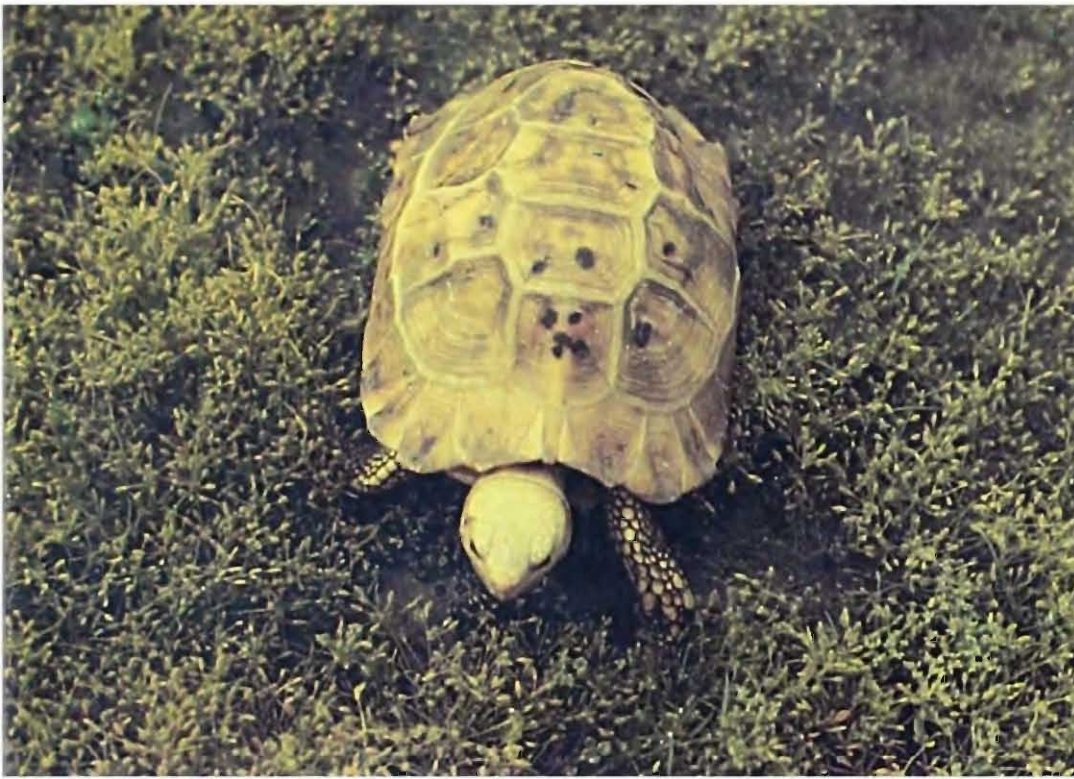
52. Varanus



53. Varanus and Banded Krait



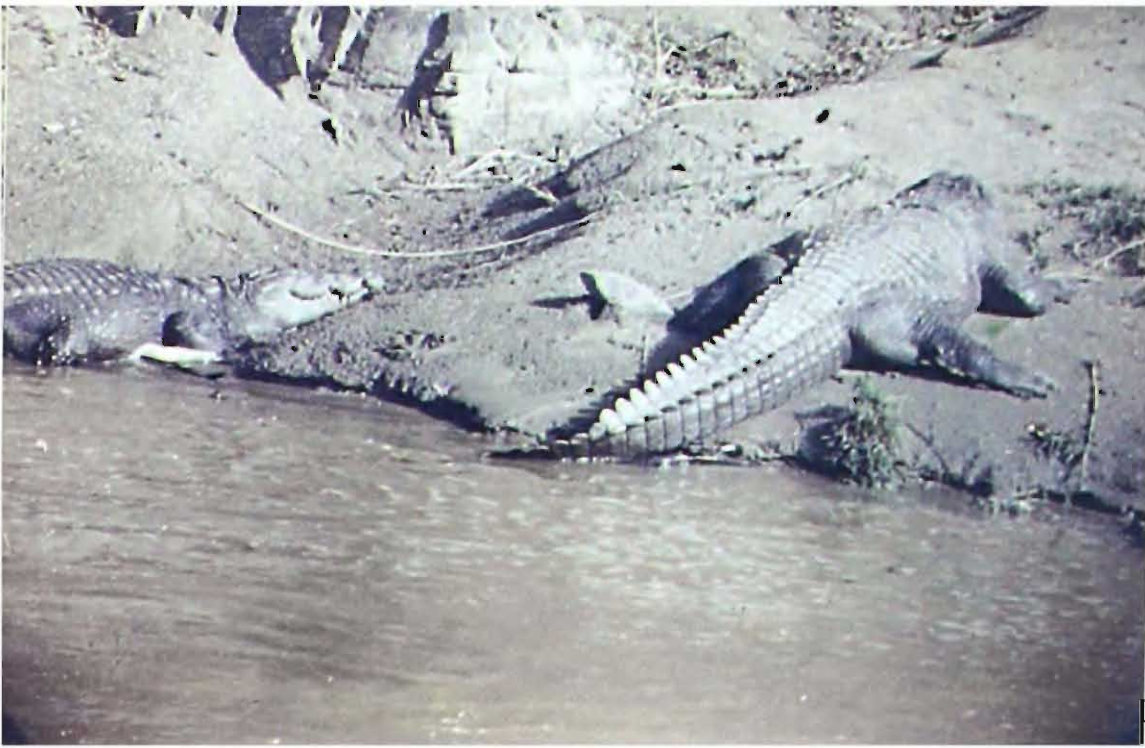
54. Indian Python



55. Yellow Tortoise.

56. Three Keeled Tortoise.





57. Freshwater Crocodile.

58. Frogs in breeding season.

