

NOTES ON THE GENUS *PLATYLABIA* DOHRN (CARCINOPHORIDAE :  
PLATYLABIINAE) WITH THE DESCRIPTION OF TWO NEW  
SPECIES FROM INDIA

G. K. SRIVASTAVA

Zoological Survey of India, Calcutta

ABSTRACT

The present paper deals with the description of two new species of the genus *Platylabia* Dohrn, from India besides the redescription of *P. major* (Dohrn). A key is provided for the separation of these three species.

The genus *Platylabia* was described by Dohrn (1867) with four new species of which first one, *P. major*, is now considered as the type of the genus and all other species belong to other genera. The original description of *P. major* is based on a female from Celebes. Subsequently this species was found to occur throughout the Oriental Region. Zacher (1910, fig. 11) for the first time figured the male genitalia of this species which possesses parameres about three times longer than broad, slightly broadened and turned externally near apex and provided with a faint tubercle close to inner apical angle. Distal lobes are provided with a distinct fine tubular virga. Therefore, those specimens which possess similar genitalia and agree with the original description and other subsequent diagnostic characters provided by Dubrony A. de (1879) and Burr (1910) are referred to this species. In the present work two new species are described which differ from the type species by the shape of male parameres besides other morphological peculiarities. Unfortunately females of all the three species look almost alike and cannot be satisfactorily placed to a particular species in the absence of males.

Genus *Platylabia* Dohrn

*Platylabia* Dohrn, 1867, *Stettin. ent. Ztg.*, 28 : 347  
(Type—*P. major* Dohrn, 1867).

*Labidophora* Soudjer, 1876, *Proc. Boston Soc. nat. Hist.*, 18 : 297 (New name for *Platylabia* Dohrn because of its similarity with *Platylabus* Wesmael, 1845).

*Palex* Burr, 1910, *Fauna Brit. India, Dermaptera* : 68 (Type—*Platylabia sparattooides* (Bormans, 1900)=*Platylabia major* Dohrn, 1867).

*Diagnostic characters.*—Body strongly flattened. Head transverse, smooth. Antennae 24 segmented, 1st stout, subclavate, shorter than the distance between antennal bases; 2nd about as long as broad; 3rd long and slender; 4th globular or subclavate; 5th longer than 4th, subclavate; 6th longer than 5th; 7th shorter or as long as 3rd, remaining gradually increasing in length and thinning. Elytra and wings well developed, latter often abbreviated. Legs normal, hind metatarsus shorter than protarsus, latter almost equal to combined length of meso- and metatarsus. Prosternum about three times longer than broad, not constricted between fore coxae; meso-sternum quadrate hind margin straight, metasternum transverse, faintly emarginate in middle posteriorly. Pygidium vertical. Male genitalia with parameres narrow or flattened, distal lobes, paired one of which directed forward; virga present.

Type-species—*Platylabia major* Dohrn, 1867

(Designated by Kirby 1891, *J. Linn. Soc. (Zool.)* 23 : 518).

*Distribution*.—Oriental Region.

KEY TO THE SPECIES (BASED ON MALES ONLY)

- 1(2). Pronotum with sides straight; parameres narrower, apices obtuse; distal lobes with virga short and curved.....*P. nathani* sp. n.
- 2(1). Pronotum with sides feebly convex in middle; parameres comparatively broader, anteriorly with a small tubercle near inner apical angle, distal lobes with virga tubular (not curved).
- 3(4). Parameres a little over twice as long as broad; virga thick, tubular with another chitinous rod; forceps internally provided with a serrated flange terminated at both ends by a small tooth.....*P. brindleyi* sp. n.
- 4(3). Parameres a little over three times longer than broad, virga thin tubular, distal lobes provided with chitinous teeth; forceps armed internally with a sharp tooth in middle....  
.....*P. major* Dohrn

### *Platylabia major* Dohrn (Figs. 1-5)

*Platylabia major* Dohrn, 1867, *Stettin. ent. Ztg.*, 28 : 347 (♀; Celebes-Holotype in PAN Zoologiczny Instytut, Warszawa, Poland);—Dubrony, 1879, *Annali Mus. civ. Stor. nat. Giacomo Doria* 14 : 372 (♂; Java); Bormans, 1888, *Annali Mus. civ. Stor. nat. Giacomo Doria*, (2) 6 : 436; Bormans, 1894, *Annali Mus. civ. Stor. nat. Giacomo Doria*, (2) 14 : 380 (Burma); Bormans, 1900, *Das Tierreich*, 11 : 74; Burr, 1904, *Trans. ent. Soc. Lond.*, : 300; Burr, 1910, *Fauna Brit. India, Dermaptera* : 125; Burr, 1911, *Genera Insect*, 122 : 43, pl. 4, figs. 6, 6a; Burr, 1912, *Ann. naturh. Hofmus., Wien*, 26 : 27 and 82; Zacher, 1910, *Ent. Rdsch.*, nr. 23, Jh. 27 : 185 (♂ genitalia); Borelli, 1923, *Boll. Musei. Zool. Anat. comp. R. univ. Torino*, 38 (NS 13) : 5; Borelli, 1926, *Treubia*, 8 : 259; Borelli, 1927, *Suppl. Ent.*, 15 : 70; Borelli, 1932, *Bull. Raffles Mus.*, 7 : 83; Borelli, 1932, *J. fed. Malay St. Mus.*, 17 (1) : 183; Hebard, 1927, *Proc. Acad. nat. Sci. Philad.*, 79 : 29; Hincks, 1945, *Proc. R. ent.*

*Soc. Lond.*, (B) 14 : 60; Boeseman, 1954, *Zool. Verh., Leiden*, 21 : 57, figs. 15a-b; Bey-Bienko, 1959, *Ent. Obozor.*, 38 : 610; Steinmann, 1979, *Fol. Ent. Hung.*, 32 (1) : 153 (Celebes, Lectotypus, female 1 ex.).

*Labidophora major* : Scudder, 1876, *Proc. Boston Soc. nat. Hist.*, 18 : 321.

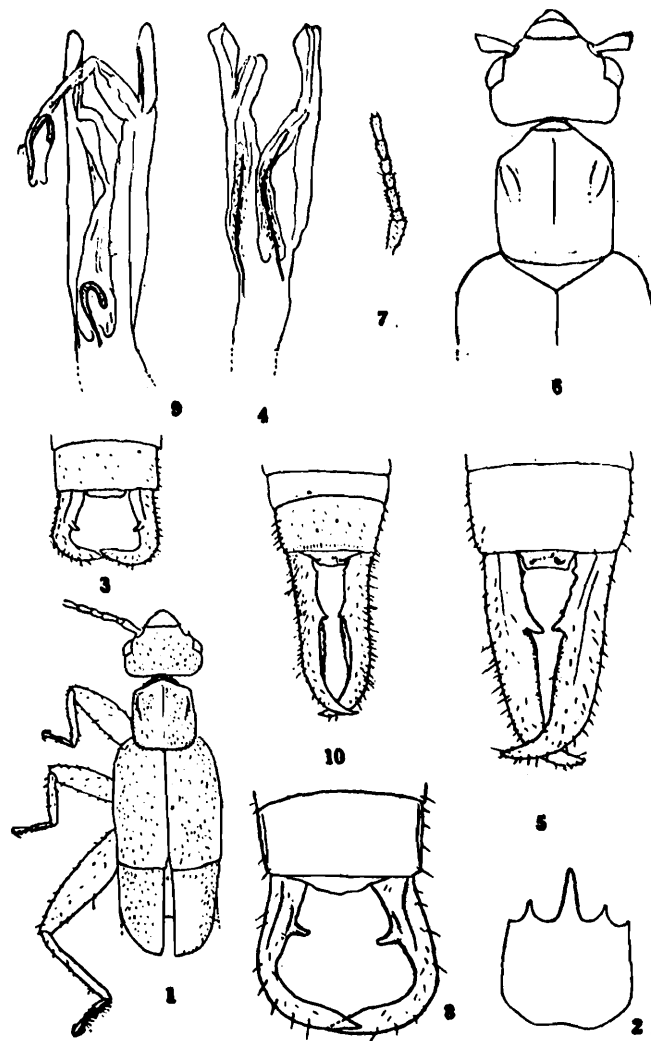
*Platylabia sparattoides* Bormans, 1900, *Annali Mus. civ. Stor. nat. Giacomo Doria*, (2) 20 : 459 (♂ ♀, Sumatra—Types at Museo Civico di Storia Naturale "Giacomo Doria", Genova).

*Palex sparattoides* : Burr, 1910, *Fauna Brit. India, Dermaptera* : 68, pl. 8, 77, 77a (Subfam. and Genera Nov.); Burr 1911, *Genera Insect.*, 122 : 43.

*Material examined*.—VIETNAM : Mt Lang, Bian, 1500m 2000 m, 1 nymph; Dalat, 6 kms, 1400-1500 m. 1 ♀, 9. vi.—7. vii.1966 (*N. R. Spencer*); 17 kms of Dilinh, 1300 m, 11 nymphs; (at various stages of development), Dilinh (Dijiring), 1200 m, 1 ex (hind portion missing), 1 ♂, 22-28.iv.1960, ex under bark (*L.W. Quate* or *S. Quate*); (NW), Chiangmai, Fang, 500 m, 7 nymphs (at different stages of development), ex dead tree, 15-19.iv.1958; Chiangmai Prov., Chiangdao, 450 m, 5 nymphs, ex rotten ficus fruit, dead tree or Banana plant, 5-11.iv.1958 (*T. C. Maa*); Trang Prov., Khaoppha, Khaochung, 200-400 m, 1 ♀ (without head), 30-31.xii.1963 (*G. A. Samuelson*); (S), Banne, Chawang, nr Nabon, 7 m, 2 ♀♀, 6.ix.1958 (*J. L. Gressitt*). LAOS : Sedon Prov., Paksong, 1 ♀, 17.v.1965 (*P.D. Ashlok*) (B. P. Bishop Museum, Hawaii).

*Description* : Form depressed; finely pubescent. Head, Pronotum, elytra and wings black; antennae with basal two segments dark brownish black, remaining light yellowish brown; legs yellow, abdomen and forceps reddish brown, often shaded with black.

Head depressed, transverse, obscurely punctate, hind margin feebly emarginate in middle. Eyes about half as long as the post-



Figs. 1-10 ; *Platylabia major* Döhrn : ♂, 1. Anterior portion of body ; 2. Penultimate sternite ; 3. Ultimate tergite and forceps ; 4. Genitalia ; ♀, 5. Ultimate tergite and forceps ; *Platylabia nathani* sp. n., Holotype ♂ : 6. Anterior portion of body ; 7. A portion of antennae with 7 basal segments ; 8. Ultimate tergite and forceps ; 9. Genitalia ; Paratype ♀ ; 10. Ultimate tergite and forceps.

ocular length. Antennae (partly broken) 25 segmented or more, 1st segment stout, distinctly shorter than the distance between antennal bases ; 2nd small ; 3rd long and slender, longer than 4th to 6th, almost equal to 7th ; 4th subclavate, shorter than 5th ; 6th onwards segments gradually increasing in length and each narrowed basally except a few apical ones thin and rod shaped. Pronotum, longer than broad, smooth, apically convex, sides depressed but feebly convex, hind margin subtruncate and postero-lateral angles briefly rounded, median sulcus faintly marked by a

depressed line ; prozona weakly raised, scarcely differentiated from flat metazona. Elytra well developed but short, feebly punctate ; often short, triangular scutellum visible. Wings well developed or only slightly projecting beyond elytra in the form of narrow, abbreviated lobes laterally, texture same as elytra. Legs normal, hind metatarsal segment shorter than protarsus which equals combined length of meso- and metatarsus, claw without arolium. Abdomen depressed, smooth or obscurely punctate, gradually enlarging posteriorly, lateral tubercles on 3rd and 4th tergites obsolete, sides of

segments convex. Penultimate sternite transverse, broadly rounded posteriorly, with faint emargination in middle. Ultimate tergite transverse, smooth, gently narrowed posteriorly, sides somewhat compressed with faint carina dorsally and ventrally, hind margin straight. Pygidium vertical, transverse, narrowed apically, posteriorly triangular with a faint tubercle in middle. Forceps with branches remote at base, sickle-shaped, tip pointed, internally armed with a sharp triangular tooth at about middle. Genitalia with parameres three times longer than broad, slightly broadened and turned externally near apex, provided with a small tubercle anteriorly near inner apical angle; virga long, thin and tubular, distal lobes provided with rows of minute chitinous hooks.

**Female :** Agrees with males in most characters except that penultimate sternite broadly triangular posteriorly; ultimate tergite comparatively more narrowed posteriorly with a row of fine striations; pygidium vertical, more prominent, above feebly convex, with a small tubercle laterally, hind margin rounded with a minute median tubercle ventrally; forceps long, depressed, almost straight, tapering apically, internal margin medially in basal half forming a serrated flange, terminating into a triangular tooth, directed posteriorly.

**Measurements :** ( In mm )

	♂	♀
Length of body	9-10.2	7.2-9.5
Length of forceps	1.2-1.3	2-2.5

**Distribution :** Appears to be widely distributed in Oriental Region.

**Remarks :** The Holotype ♀ of this species, present in the PAN Zoologiczny Institute, Warszawa, Poland, has been examined by Steinmann (1979) together with other material from Java and 1 ex. from Burma (probably ex

Bormans collection). *Platylabia sparattoides* Bormans (1900) from Sumatra is considered as synonym since its description agrees well with the original description of *Platylabia major* and other males subsequently referred to it.

***Platylabia nathani* sp. n.**

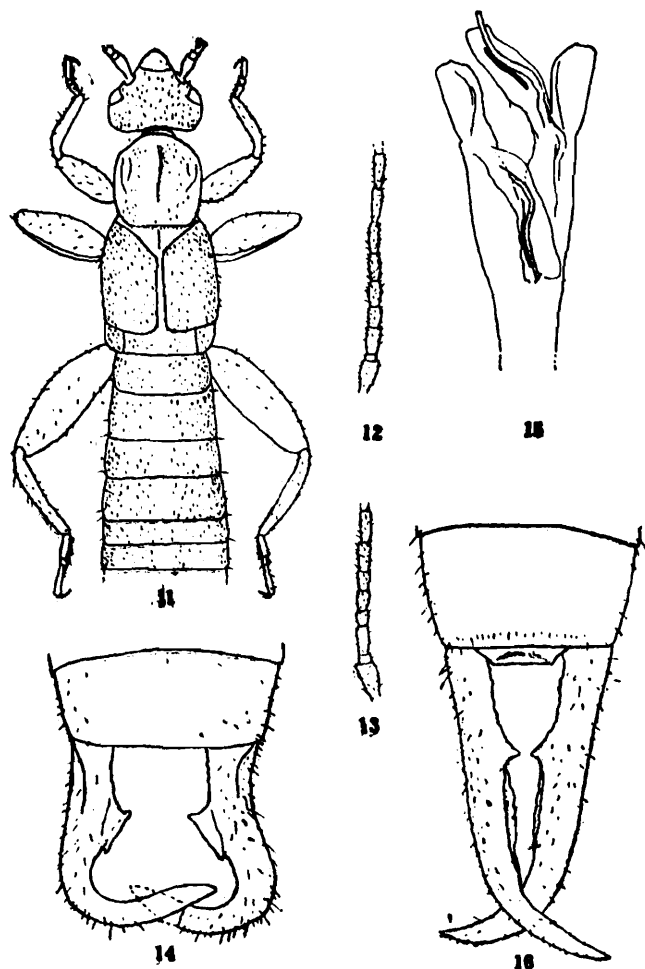
( Figs. 6-10 )

*Platylabia major* : (nec Dohrn) Srivastava, 1970, EOS, 56 : 325 (♂, ♀ : India : Anamalai Hills, Cinchona, 3500', May, 1968).

**Material examined :** INDIA : Tamil Nadu : Anamalai Hills, Cinchona, 3500', Holotype ♂; Reg. No. 804./H5 (genitalia mounted between two coverslips and pinned with the specimen), Paratype ♀, Reg. No. 8046/H6 May, 1968 (*P. S. Nathan*), deposited in the Zoological Survey of India, Calcutta.

**Description :** Whole body depressed, finely pubescent. General colour orange, often shaded with black on various body parts; elytra and wings black.

Head triangular, transverse, obscurely punctate, sutures obsolete, hind margin emarginate in middle. Eyes only slightly shorter than the post-ocular length. Antennae partly broken (left antenna missing, on right side only 14 segments remaining); 1st stout, gently expanded anteriorly, shorter than the distance between the antennal bases and longer than eye; 2nd small, about as long as broad; 3rd long, slender; 4th stout, gently expanded anteriorly; 5th slightly longer than preceding; 7th equal to 3rd but stouter, beyond this segments gradually thinning and increasing in length distally. Pronotum smooth, longer than broad; anteriorly convex, forming a sort of neck, sides depressed, straight, parallel, hind margin subtruncate, median sulcus distinct; prozona weakly raised and metazona depressed. Legs normal. Elytra well developed, obscurely punctate; a small triangular scutellum present. Wings normal, of same texture as the elytra. Abdomen



Figs. 11-16 ; *Platylabia brindlei* sp. n., Holotype ♂ ; 11. Anterior portion of body; 12. A portion of right antennae ; 13. A portion of left antennae ; 14. Ultimate tergite and forceps ; 15. Genitalia ; Paratype ♀ ; 16. Ultimate tergite and forceps.

almost parallel sided, faintly punctate, lateral tubercles obsolete, sides of segments convex. Penultimate sternite broadly rounded posteriorly with a faint emargination in middle. Ultimate tergite transverse, almost smooth, medially depressed, laterally compressed with dorsal border sharp, hind margin almost straight. Pygidium vertical, convex above, transverse, narrowed apically with a faint tubercle in middle. Forceps remote at base, sickle-shaped, apices crossing, pointed, trigonal in basal one third afterwards depressed, armed internally with a sharp triangular tooth at about middle with its tip bent downwards. Genitalia with parameres narrow, a little over three times longer than broad, almost

of uniform width throughout, apex obtuse, distal lobes with a short and curved virga.

*Female* : Agrees with males in most characters except that penultimate sternite and ultimate tergite narrowed posteriorly ; pygidium vertical, convex above, but concave in middle basally, hind margin somewhat undulate ; forceps with branches, depressed, straight, tapering apically, internal margin dorsally forming a sharp serrated flange terminating into a triangular tooth in middle, ventral margin serrated.

*Measurements* : (in mm)

	Holotype	Paratype
	♂	♀
Length of body	8.4	8.5
Length of forceps	1.4	2.3

*Distribution* : Known from type locality only.

*Platylabia brindlei* sp. n.

*Material examined* : INDIA : Meghalaya : Cherrapunji, nr Mawsamai Cave (ex under bark of dead tree), 1300 m, Holotype ♂; Reg. No. 8047/H5 (genitalia mounted between two coverslips and pinned with the specimen), Paratype ♀, Reg. No. 8048/H5 25.v.1979 (G. K. Srivastava); deposited in the Zoological Survey of India, Calcutta.

*Description* : Form depressed, finely pubescent. General body colour brownish black, head, pronotum, elytra and wings black; antennae fuscous brown with one or two preapical segments whitish; legs blackish brown; a few apical tergites and forceps brownish.

*Male* : Head transverse, smooth, hind margin emarginate, sutures obsolete. Eyes distinctly shorter than the post-ocular length. Antennae 24-segmented or more (appear to be partly broken, only 24 segments, on the left side and 18 segments on the right present); 2nd small, remaining segments same as in preceding species. Pronotum longer than broad, anteriorly convex, sides depressed but convex, hind margin subtruncate, median sulcus distinct; prozona weakly raised and metazona depressed. Elytra normal, meeting along the medium suture; a triangular scutellum visible. Wings abbreviated, scarcely projecting beyond the elytra as narrow lateral lobes. Legs normal. Abdomen depressed, gradually enlarging from base to apex, depressed, thickly pubescent, smooth, sides of segments convex. Penul-

imate sternite broadly rounded with a faint emargination in middle. Ultimate tergite transverse, obscurely punctate, depressed along the median line, sides compressed, hind margin almost straight. Pygidium vertical, strongly transverse, depressed, narrowed posteriorly hind margin straight. Forceps sickle-shaped, trigonal in basal third, apices pointed and crossing, internally armed at middle with a sharp, oblique flange terminated at both ends by a sharp tooth. Genitalia with parameres broad, length slightly exceeding double its width, a faint tubercle present apically close to inner apical angle; distal lobes with a stout, tubular virga and an additional chitinous rod.

*Female* : Agrees with male in most characters except that the penultimate sternite and ultimate tergite narrowed posteriorly, latter striate near hind margin; pygidium weakly transverse, vertical; forceps depressed, almost straight, internally armed at middle with a triangular tooth and margin dorsally as well as ventrally serrated.

*Measurements* : (in mm)

	Holotype	Paratype
	♂	♀
Length of body	9.1	9.9
Length of forceps	1.6	2.7

*Distribution* : Known from type locality only.

*Remarks* : Some variations in the relative length of antennal segments 4th to 7th of both sides have been noted (figs. 12, 13) in Holotype.

This species has been named after Mr. A. Brindle of Manchester Museum (U. K.)

ACKNOWLEDGEMENTS

I am thankful to the Director, Zoological Survey of India, Calcutta for providing necessary facilities during the course of present work. My thanks are also due to Dr. F. J. Radovisky, Chairman, Department of Entomology, B. P. Bishop Museum, Honolulu, Hawaii (U. S. A.), for placing at my disposal unidentified material of Dermaptera referred to under *Platylabia major* (Dohrn).

REFERENCES

BURR, M. 1910. *Fauna of British India, Dermaptera*, xviii + 217 pp., 10 pls.

DOHRN, H. 1867. Neue und bisher nicht genügend bekannte Forficulinen. *Stettin. ent. Ztg.* 28 : 343-349.

DUBRONY, A. DE. 1879. Enumeration des Orthoptères rapportés par MM. J. Doria, O. Beccari, et L.M. d' Albertes des régions Indienne et Austro-malaise, par A. Dubrony. *Annali. Mus. civ. Stor. nat. Giacomo Doria*, 14 : 348-383.

ZACHER, F. 1910. Tiergeographische, phylogenetische und biologische Bemerkungen zu Malcolm Burr's Dermapteren fauna von British Indien, Burma an Ceylon. *Ent. Rdsch.*, Nr. 23, Jh. 27 : 174-176.

