

A NEW SPECIES OF THE GENUS *ITALOCHRYSA* PRINCIPI
(NEUROPTERA : CHRYSOPIDAE) FROM INDIA.

S. K. GHOSH

Zoological Survey of India, Calcutta

ABSTRACT

Italochrysa flavobrunnea, sp. nov., is described in this paper.

INTRODUCTION

In course of the taxonomical studies on the neuropteran material from the northern and southern peninsular India, the author came across an interesting species belonging to the genus *Italochrysa* Principi. Tjeder (1966) claimed to have seen other species of the genus from India and elsewhere, but he did not furnish any published record of their distributional data from India.

Presently, the paper incorporates a detailed illustrated account of the species, *Italochrysa flavobrunnea*, sp. nov., from Madhya Pradesh and Tamil Nadu. The specimens bearing registration no. 614/H₁₂ and 850/H₁₂ will be duly deposited at Zoological Survey of India.

Italochrysa flavobrunnea sp. nov.

Female : Labrum and palpi : brown ; frons, clypeus and vertex : yellow ; antenna : scape and pedicel yellow but flagellum black ; pronotum : yellow with dark brown anterior margin and a transverse band on the disc ; mesonotum : yellow with blackish markings on anterior margin of prescutum, on hinder part of scutum and on anterior part of scutellum ; metanotum : scutum and scutellum similarly spotted as in mesonotum ; wings (Plate III) : elongate with subacute apex ;

forewing : longitudinal veins pale, yellowish white but portion of Rs beyond middle black ; second to sixth costals upto middle portion, cross vein between cell m₁ and m₂, basal cubital crossvein and all gradates in inner row and distal five in outer row black ; cell m₂ longer than m₁ ; pterostigma elongate and brownish ; hind wing : with pale venation, leg : femur yellow with a blackish spot just before apex but in addition to it a brown longitudinal line present on the inner side of foreleg ; tibia yellow but foreleg with a longitudinal brown line on the inner side ; tarsus brown ; claw brown with a tooth at base ; abdomen (Fig. 1, A) : black but apex of each segment yellow ; tergite 9+ ectoproct with narrow dorsal portion and obliquely expanded lower portion ; Sternite 7 with almost rounded distal margin ; spermatheca and subgenital plate as in Text-figs. 1, B and C.

Measurement : length of forewing, 16-17 mm : of hindwing, 14-15 mm.

Material : Holotype ♀ (Reg. No. 614/H₁₂) : INDIA : Top slip, Coimbatore, Tamil Nadu, coll. nil, 18. xi. 1969 ; Paratype ♀ (Reg. no. 850/H₁₂) : Kanker rest house, Bastar, Madhya

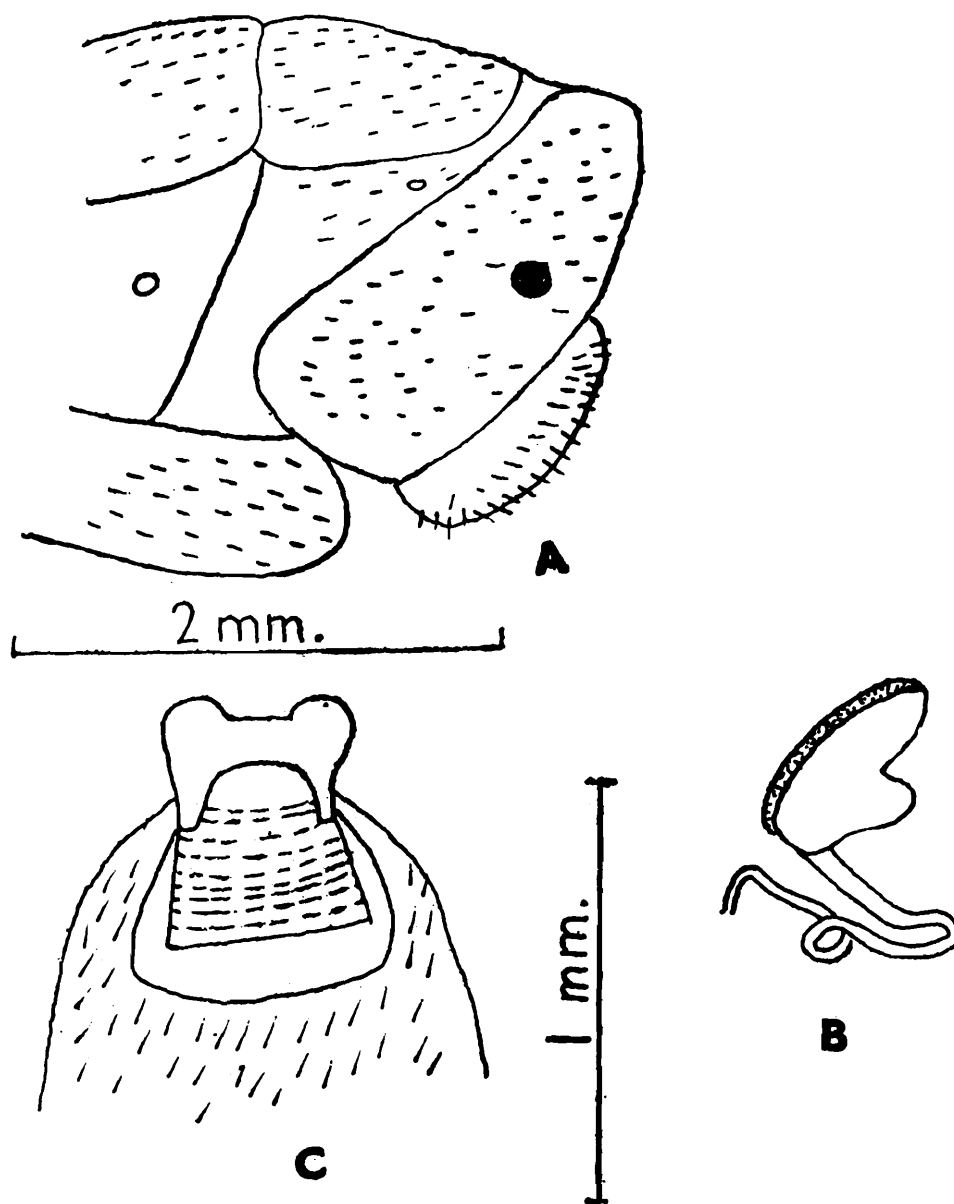


Fig. 1. A. apex of abdomen, lateral ;
B. spermatheca, lateral ; C. subgenital plate, ventral.

Pradesh, coll. M. S. Shishodia and party,
4.i.1979.

Remark : The species is very much allied to *Italochrysa vartianorum* Holzel from Afghanistan. It differs from it by the frons, clypeus and ground colour of the thorax yellow ; forewing with second to sixth costals upto middle, cross veins between cell m_1 and m_2 , basal cubital cross veins, all gradates in inner row and distal five in outer row, and abdomen black.

ACKNOWLEDGEMENT

The author is indebted to the Director, Zoological Survey of India, Calcutta, for providing necessary facilities to work on the group.

REFERENCE

- TJEDER, B. 1966. The Lace-wings of Southern Africa. 5. Family Chrysopidae.—*South Afr. Anim. Life*, 12 : 267.